

RIGHT OF WAY DEDICATION PLAT

--- / --- / ---

SPACE RESERVED FOR RECORDING OFFICER

CITY OF MASCOUTAH LEBANON STREET, GREEN STREET, PATTERSON STREET & POPLAR STREET ST. CLAIR COUNTY, ILLINOIS

RIGHT-OF-WAY LEGEND

- EXISTING RIGHT-OF-WAY LINE
- PROPOSED CENTERLINE
- PROPOSED RIGHT-OF-WAY LINE
- ||||| PROPOSED TEMPORARY CONSTRUCTION EASEMENT LINE
- PROPERTY LINE (TITLE)
- SAME OWNERSHIP
- FOUND IRON PIPE OR IRON ROD AT CORNER UNLESS OTHERWISE NOTED
- SET 5/8 INCH IRON ROD WITH PLASTIC CAP IDENTIFIED BY SURVEYORS LICENSE NUMBER AT CORNER UNLESS OTHERWISE NOTED

STATE OF ILLINOIS)
)SS
COUNTY OF ST. CLAIR)

I, GERALD DAUGHTERY, MAYOR OF THE CITY OF MASCOUTAH, DO HEREBY CERTIFY THAT THE PLAT SHOWN HEREIN WAS DULY PRESENTED TO THE CITY COUNCIL AND APPROVED AT A MEETING OF THE SAME HELD ON THE ___ DAY OF _____, 2021. WE ALSO STATE THAT THE RIGHTS OF THE CITY OF MASCOUTAH TO THE TEMPORARY CONSTRUCTION EASEMENTS SHOWN HEREON SHALL EXPIRE SIX (6) MONTHS AFTER THE COMPLETION OF CONSTRUCTION.

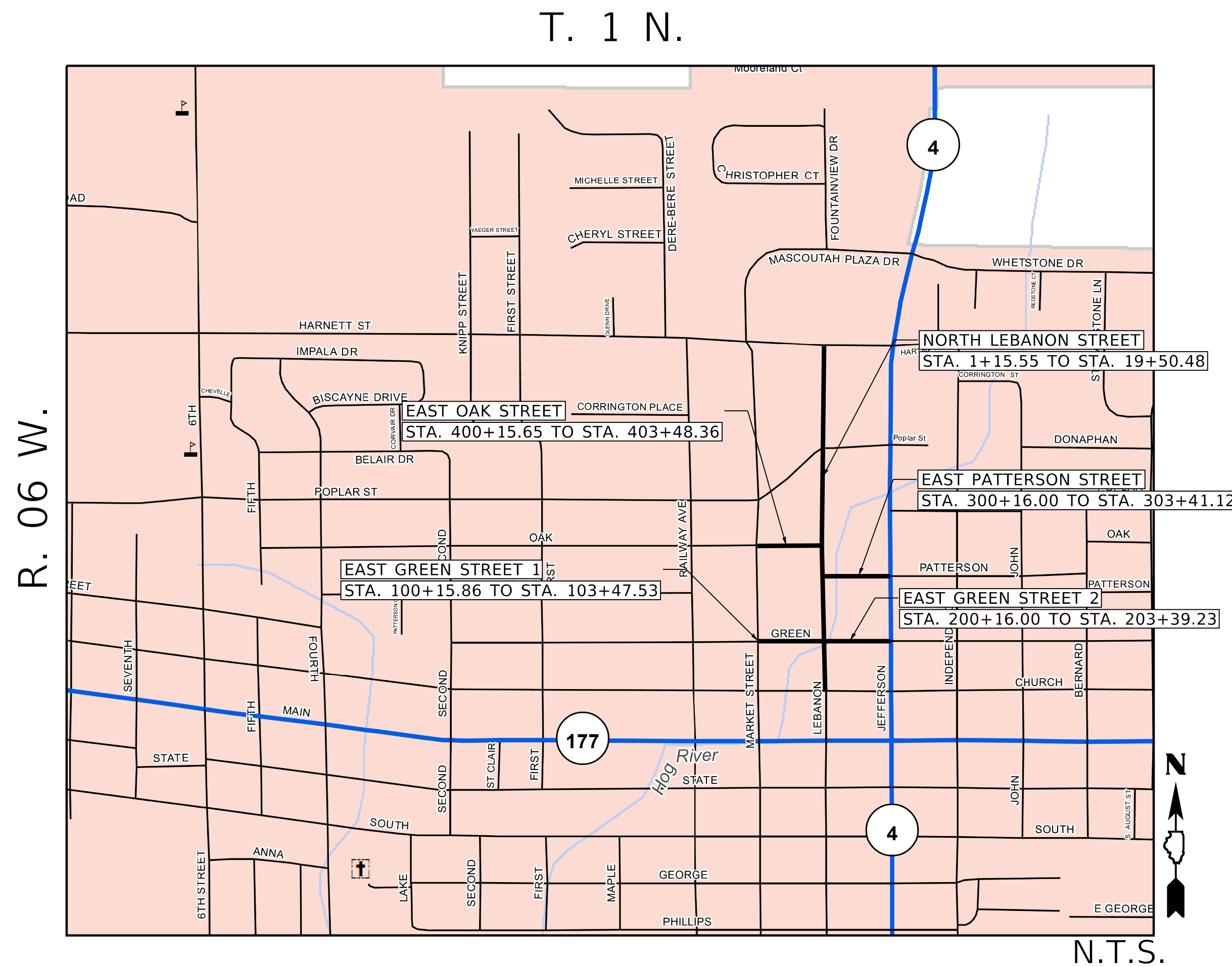
MAYOR CITY CLERK DATE

I, THE UNDERSIGNED COUNTY CLERK OF ST. CLAIR COUNTY, ILLINOIS, DO HEREBY CERTIFY THAT I HAVE EXAMINED THE ACCOMPANYING PLAT AND THAT I HAVE SEARCHED THE RECORDS OF MY OFFICE TO ASCERTAIN WHETHER ALL REDEEMABLE SALES FOR UNPAID TAXES OR SPECIAL ASSESSMENTS HAVE BEEN PAID AS REQUIRED BY THE STATUTES UPON ALL OF THE PROPERTY EMBRACED WITHIN THIS PLAT.

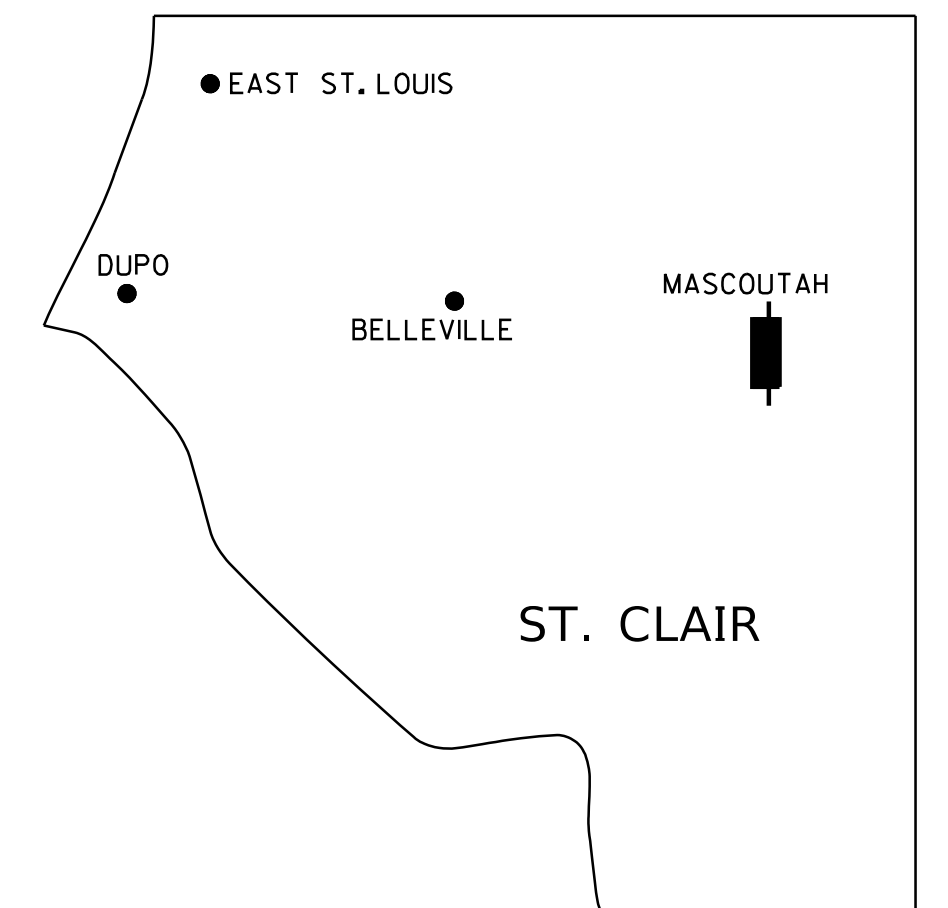
I HEREBY CERTIFY THAT I FIND NO REASONABLE TAX SALE OR UNPAID FROFEITED TAXES AGAINST ANY OF THE REAL ESTATE EMBRACED IN THIS PLAT AND APPROVE THE SAME FOR ASSESSMENT PURPOSES.

IN WITNESS WHEREOF, I HAVE HEREUNTO SET MY HAND AND SEAL OF MY OFFICE ON THIS ___ DAY OF _____, 2021.

COUNTY CLERK



TOTAL PROJECT LENGTH = 3,148 LIN. FT. +/- = 0.596 MILES



LOCATION OF SECTION INDICATED THUS: [Symbol]

PREPARED BY:
THOUVENOT, WADE & MOERCHEN, INC.
SWANSEA • WATERLOO • EDWARDSVILLE • ST. LOUIS • ST. CHARLES

CORPORATE OFFICE
4940 Old Collinsville Road
Swansea, Illinois 62226
Tel: 618.624.4488
Fax: 618.624.6688



IDPR DESIGN FIRM LICENSE NO. 184-001220

THIS IS TO CERTIFY THAT AT THOUVENOT, WADE & MOERCHEN, INC. HAS SURVEYED AND PLATTED "LEBANON STREET, GREEN STREET, PATERSON STREET AND POPLAR STREET" AS SHOWN HEREON.

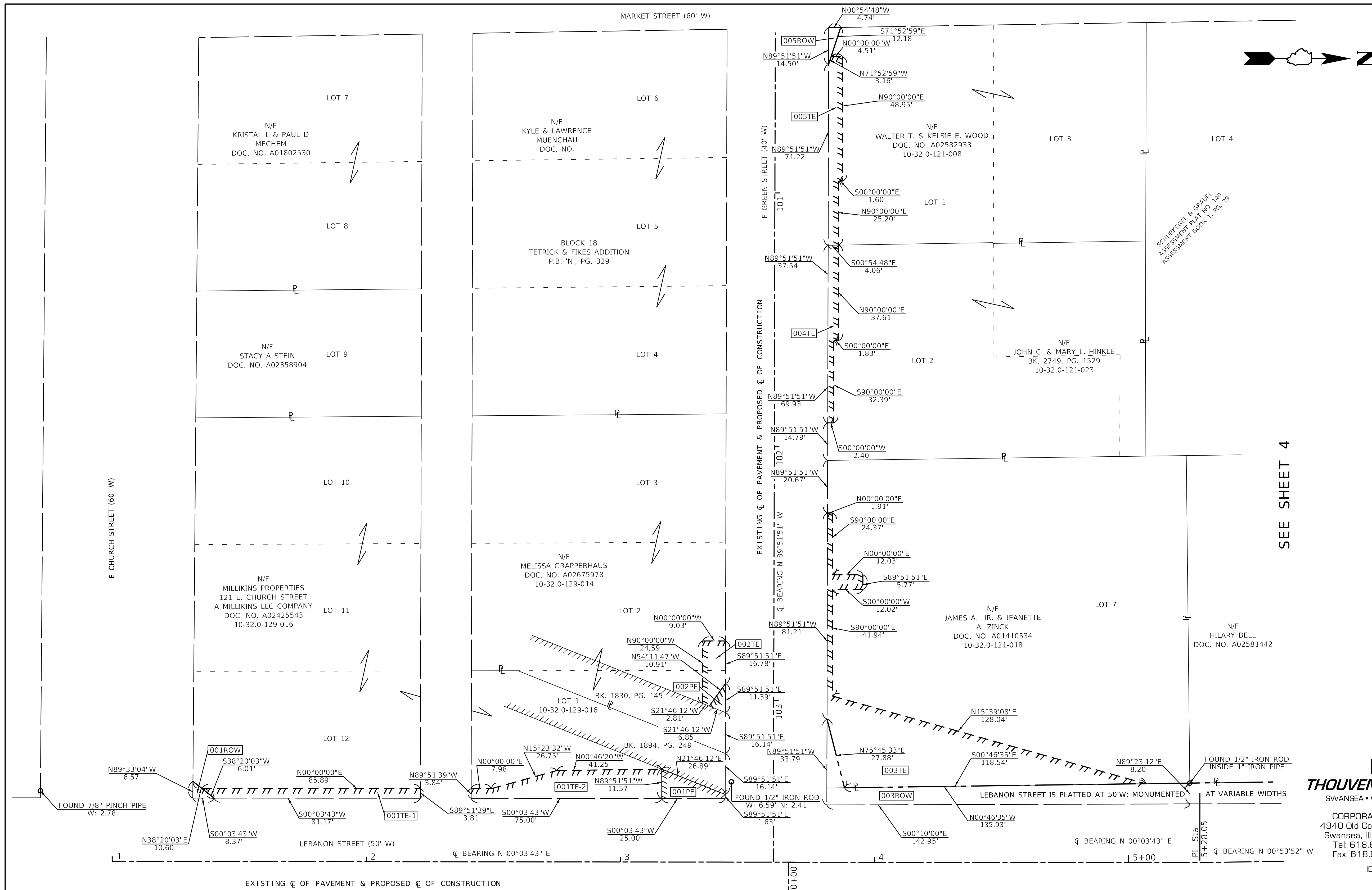
THIS PROFESSIONAL SERVICE CONFORMS TO THE CURRENT ILLINOIS MINIMUM STANDARDS FOR A BOUNDARY SURVEY. FIELD WORK COMPLETED ON: _____

THOUVENOT, WADE, & MOERCHEN, INC. - FIRM REGISTRATION NO. 184-001220

EDGAR M. BARNAL, PLS # 035-002750
LICENSE EXPIRATION DATE: 11/30/2022

| SHEET INDEX | | |
|-------------|--------------------|------------------------------------------------------------------------------|
| SHEET NO. | STATION to STATION | PARCEL(S) |
| 1 | COVER SHEET | |
| 2 | 1+00 - 5+30 | 10-32.0-129-016, -014; 10-32.0-121-008, -023, -018 |
| 3 | 3+60 - 8+00 | 10-32.0-122-011 & 012, -006, -001 & -002 & -003, -007; 10-32.0-109-036, -037 |
| 4 | 5+00 - 10+40 | 10-32.0-121-017, -025; 10-32.0-121-014, -013, -021; 10-32.0-108-010 |
| 5 | 10+30 - 16+40 | 10-32.0-108-009, -006; 10-32.0-161-009, -008 |
| 6 | 16+40 - 19+90 | 1032.0-161-010, -006 |
| 7 | SIGNATURE PAGE 1 | |
| 8 | SIGNATURE PAGE 2 | |
| 9 | SIGNATURE PAGE 3 | |

PART OF THE NW 1/4 OF SECTION 32, T1N, R6W, OF THE 3RD PM, ST. CLAIR COUNTY, ILLINOIS



SEE SHEET 4

PREPARED BY:
THOUVENOT, WADE & MOERCHEN, INC.
 SWANSEA • WATERLOO • EDWARDSVILLE • ST. LOUIS • ST. CHARLES

CORPORATE OFFICE
 4940 Old Collinsville Road
 Swansea, Illinois 62226
 Tel: 618.624.4488
 Fax: 618.624.6688

TWM

IDPR DESIGN FIRM LICENSE NO. 184-001220

| OWNER | FEE SIMPLE ACQUISITION | | TEMPORARY CONSTRUCTION EASEMENT | | PERMANENT EASEMENT | | EASEMENT PURPOSE | PERMANENT TAX NUMBER |
|---------------------------------------|------------------------|---------|---------------------------------|------------|--------------------|---------|-----------------------------------|----------------------|
| | ACRES | SQ. FT. | ACRES | SQ. FT. | ACRES | SQ. FT. | | |
| MILLIKINS PROPERTIES 001 | 0.0006 | 27 | 0.0072 TE-1 0.0158 TE-2 | 315 687 | 0.0038 | 165 | SIDEWALK CONSTRUCTION AND GRADING | 10-32.0-129-016 |
| MELISSA GRAPPERHAUS 002 | N/A | N/A | 0.0046 | 201 | 0.0008 | 36 | SIDEWALK CONSTRUCTION AND GRADING | 10-32.0-129-014 |
| WALTER T. & KELSIE E. WOOD 005 | 0.0008 | 34 | 0.0085 | 371 | N/A | N/A | SIDEWALK CONSTRUCTION AND GRADING | 10-32.0-121-008 |
| JOHN C. & MARY L. HINKLE 004 | N/A | N/A | 0.0053 | 231 | N/A | N/A | SIDEWALK CONSTRUCTION AND GRADING | 10-32.0-121-023 |
| JAMES A., JR. & JEANETTE A. ZINCK 003 | 0.0266 | 1,157 | 0.0558 | 2,429 | N/A | N/A | SIDEWALK CONSTRUCTION AND GRADING | 10-32.0-121-018 |

FOUND 3/4" PIPE

SEE SHEET 3

PART OF THE NW 1/4 OF SEC. 32, T. 1 N., R. 6 W. OF THE 3RD P.M.

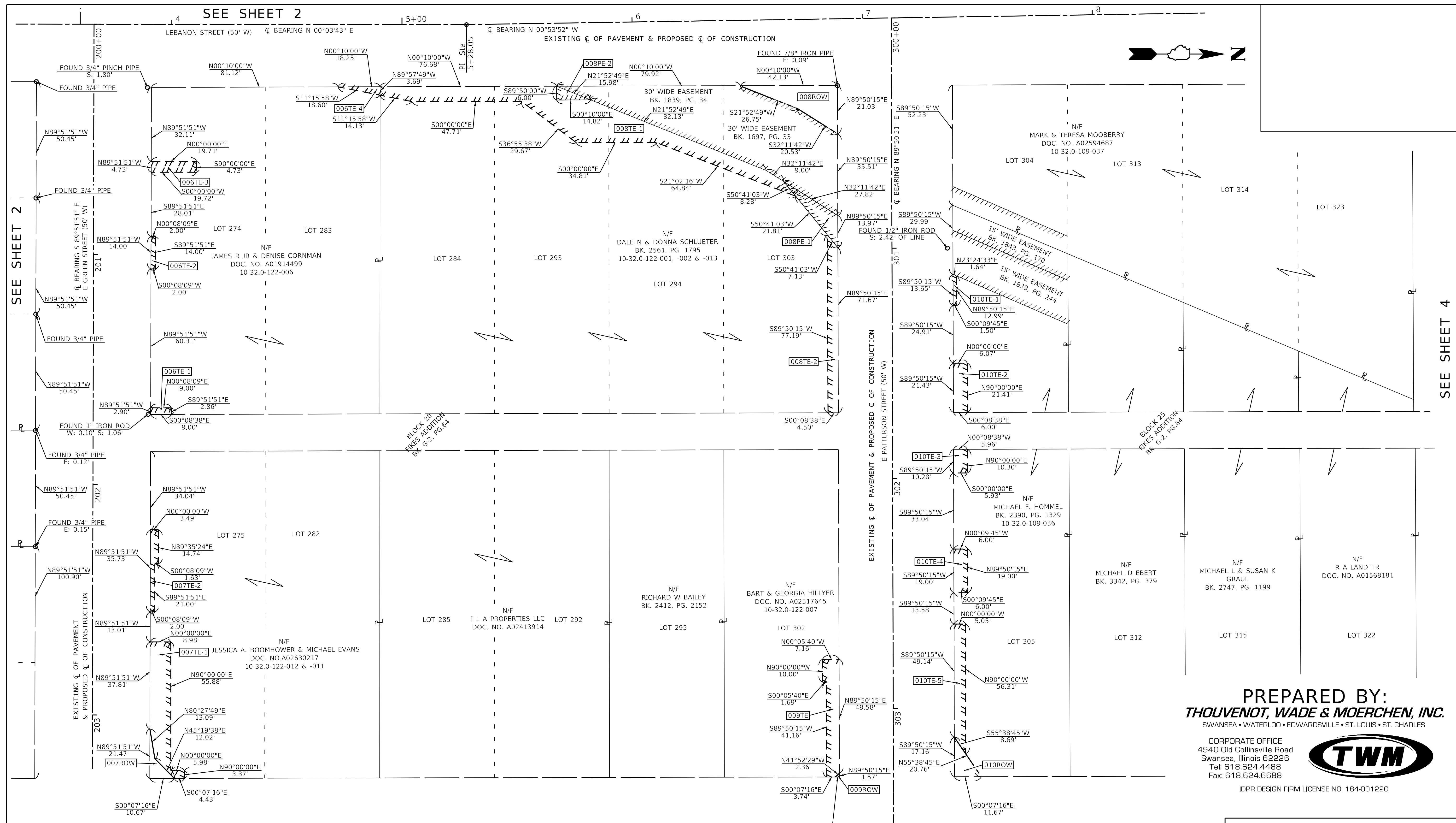
CITY OF MASCOUTAH
RIGHT OF WAY DEDICATION PLAT
 LEBANON STREET,
 GREEN STREET, OAK STREET,
 PATTERSON STREET AND POPLAR STREET
 ST. CLAIR COUNTY, ILLINOIS
 STA. 1+00 TO STA. 5+30

SCALE: 1" = 20'

| | | | |
|-------------------------|-----------|--------------|-----------|
| JOB NO.: T32200322 | COUNTY | TOTAL SHEETS | SHEET NO. |
| LEBANON & GREEN STREETS | ST. CLAIR | 9 | 2 |

SHEET 1 IS A COVER SHEET

PART OF THE NW 1/4 OF SECTION 32, T1N, R6W, OF THE 3RD PM, ST. CLAIR COUNTY, ILLINOIS



| OWNER | FEE SIMPLE ACQUISITION | | TEMPORARY CONSTRUCTION EASEMENT | | PERMANENT EASEMENT | | EASEMENT PURPOSE | PERMANENT TAX NUMBER |
|------------------------------------------|------------------------|---------|-------------------------------------------------------------------|--------------------------------------------------|----------------------------|---------------------|-----------------------------------|-------------------------------------------------------|
| | ACRES | SQ. FT. | ACRES | SQ. FT. | ACRES | SQ. FT. | | |
| JESSICA A. BOOMHOWER & MICHAEL EVANS 007 | 0.0016 | 69 | 0.0112 TE-1 0.0022 TE-2 | 487 TE-1 94 TE-2 | N/A | N/A | SIDEWALK CONSTRUCTION AND GRADING | 10-32.0-122-012 10-32.0-122-011 |
| JAMES R JR & DENISE CORNMAN 006 | N/A | N/A | 0.0006 TE-1 0.0006 TE-2 0.0021 TE-3 0.0008 TE-4 | 26 TE-1 28 TE-2 93 TE-3 34 TE-4 | N/A | N/A | SIDEWALK CONSTRUCTION AND GRADING | 10-32.0-122-006 |
| DALE N & DONNA SCHLUETER 008 | 0.0090 | 394 | 0.0356 TE-1 0.0077 TE-2 | 1,552 TE-1 335 TE-2 | 0.0038 PE-1 0.0010 PE-2 | 164 PE-1 44 PE-2 | SIDEWALK CONSTRUCTION AND GRADING | 10-32.0-122-001 10-32.0-122-002 10-32.0-122-013 |
| BART & GEORGIA HILLYER 009 | 0.00003 | 1 | 0.0068 | 297 | N/A | N/A | SIDEWALK CONSTRUCTION AND GRADING | 10-32.0-122-007 |
| MICHAEL F. HOMMEL 010 | 0.0023 | 100 | 0.0004 TE-1 0.0030 TE-2 0.0014 TE-3 0.0026 TE-4 0.0060 TE-5 | 20 TE-1 129 TE-2 61 TE-3 114 TE-4 262 TE-5 | N/A | N/A | SIDEWALK CONSTRUCTION AND GRADING | 10-32.0-109-036 |

PREPARED BY:
THOUVENOT, WADE & MOERCHEN, INC.
 SWANSEA • WATERLOO • EDWARDSVILLE • ST. LOUIS • ST. CHARLES

CORPORATE OFFICE
 4940 Old Collinsville Road
 Swansea, Illinois 62226
 Tel: 618.624.4488
 Fax: 618.624.6688

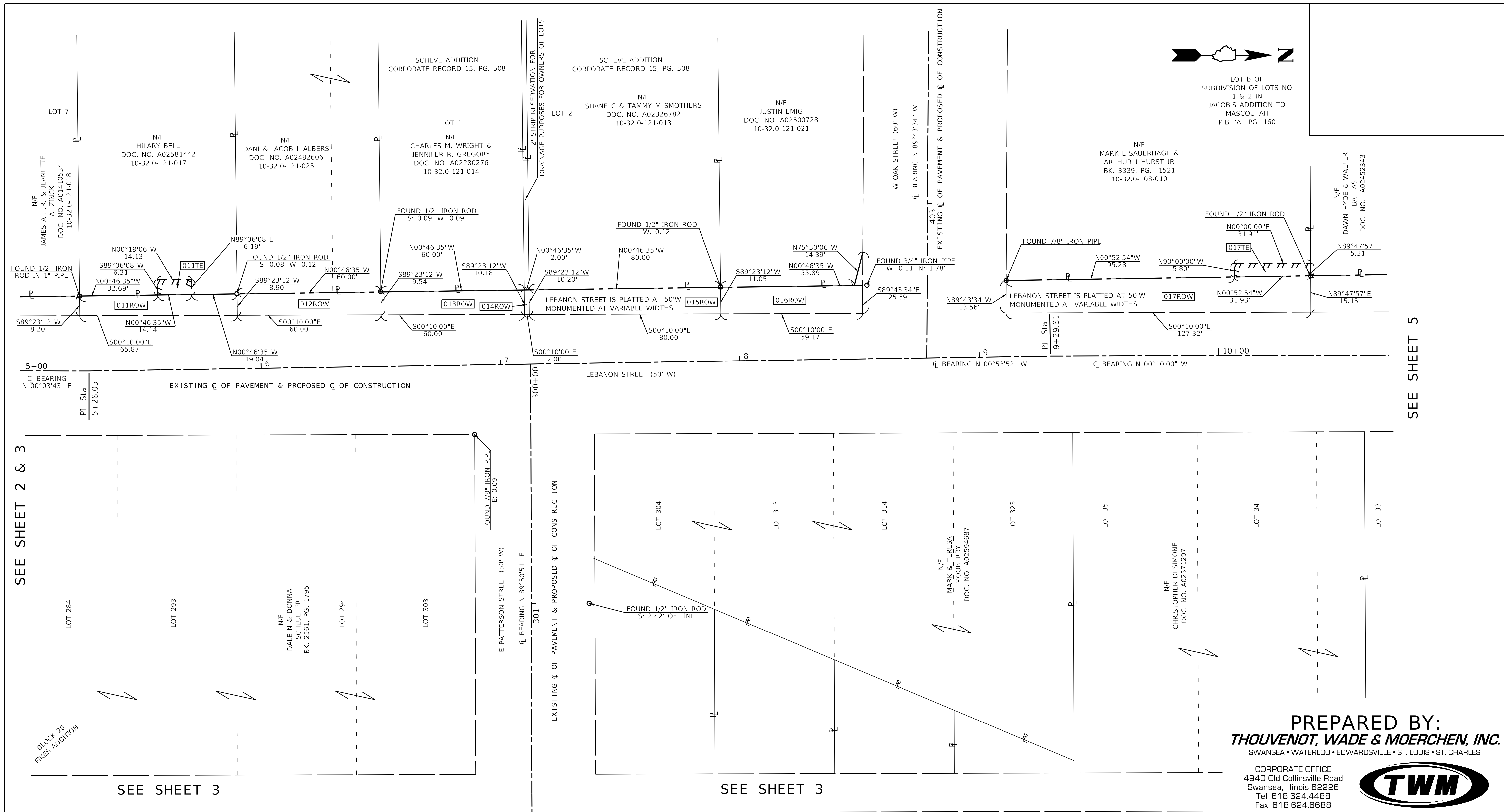
IDPR DESIGN FIRM LICENSE NO. 184-001220

CITY OF MASCOUTAH
RIGHT OF WAY DEDICATION PLAT
 LEBANON STREET,
 GREEN STREET, OAK STREET,
 PATTERSON STREET AND POPLAR STREET
 ST. CLAIR COUNTY
 STA. 3+60 TO STA. 8+00

| | | | |
|---------------------------------|-----------|--------------|-----------|
| JOB NO.: T32200322 | COUNTY | TOTAL SHEETS | SHEET NO. |
| GREEN, LEBANON AND PATTERSON ST | ST. CLAIR | 9 | 3 |

SHEET 1 IS A COVER SHEET

PART OF THE NW 1/4 OF SECTION 32, T1N, R6W, OF THE 3RD PM, ST. CLAIR COUNTY, ILLINOIS



SEE SHEET 2 & 3

SEE SHEET 3

SEE SHEET 3

SEE SHEET 5

| OWNER | FEE SIMPLE ACQUISITION | | TEMPORARY CONSTRUCTION EASEMENT | | PERMANENT EASEMENT | | EASEMENT PURPOSE | PERMANENT TAX NUMBER |
|---------------------------------------------|------------------------|---------|---------------------------------|---------|--------------------|---------|-----------------------------------|----------------------|
| | ACRES | SQ. FT. | ACRES | SQ. FT. | ACRES | SQ. FT. | | |
| HILARY BELL 011 | 0.0129 | 563 | 0.0020 | 88 | N/A | N/A | N/A | 10-32.0-121-017 |
| DANI & JACOB L ALBERS 012 | 0.0127 | 553 | N/A | N/A | N/A | N/A | N/A | 10-32.0-121-025 |
| CHARLES M. WRIGHT & JENNIFER R. GREGORY 013 | 0.0136 | 592 | N/A | N/A | N/A | N/A | N/A | 10-32.0-121-014 |
| 2' STRIP FOR DRAINAGE PURPOSES 014 | 0.0005 | 20 | N/A | N/A | N/A | N/A | N/A | |
| SHANE C & TAMMY M SMOTHERS 015 | 0.0195 | 850 | N/A | N/A | N/A | N/A | N/A | 10-32.0-121-013 |
| JUSTIN EMIG 016 | 0.0160 | 697 | N/A | N/A | N/A | N/A | N/A | 10-32.0-121-021 |
| MARK L SAUERHAGE & ARTHUR J HURST JR 017 | 0.0419 | 1,827 | 0.0041 | 177 | N/A | N/A | SIDEWALK CONSTRUCTION AND GRADING | 10-32.0-108-010 |

PREPARED BY:
THOUVENOT, WADE & MOERCHEN, INC.
 SWANSEA • WATERLOO • EDWARDSVILLE • ST. LOUIS • ST. CHARLES

CORPORATE OFFICE
 4940 Old Collinsville Road
 Swansea, Illinois 62226
 Tel: 618.624.4488
 Fax: 618.624.6688

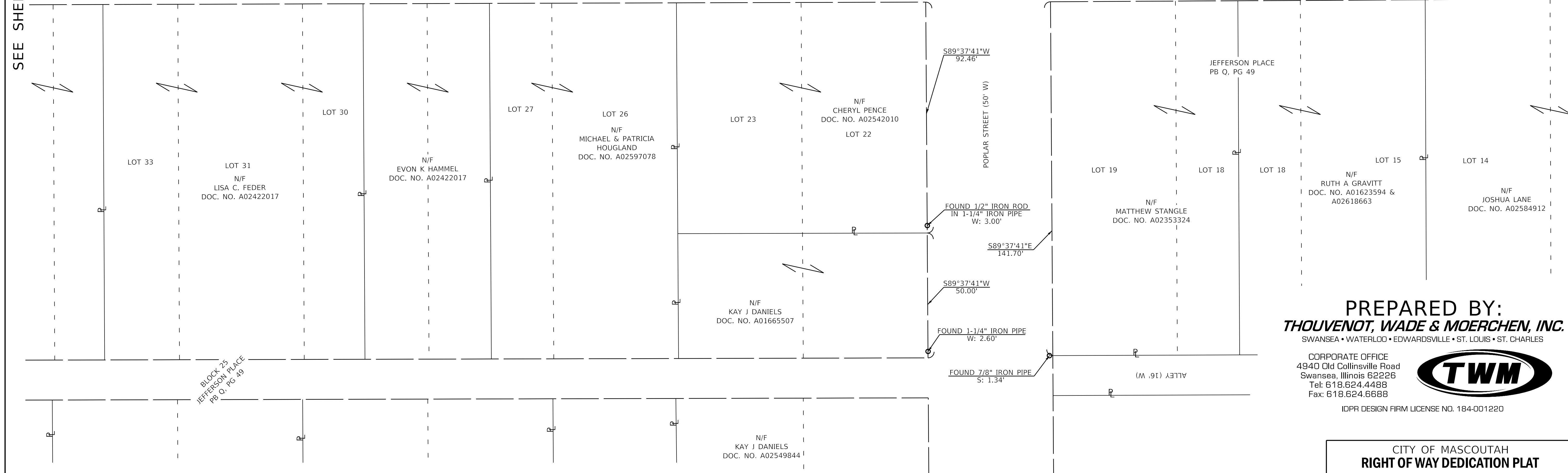
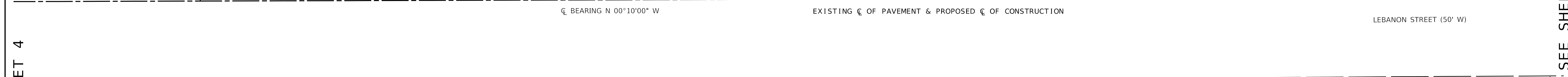
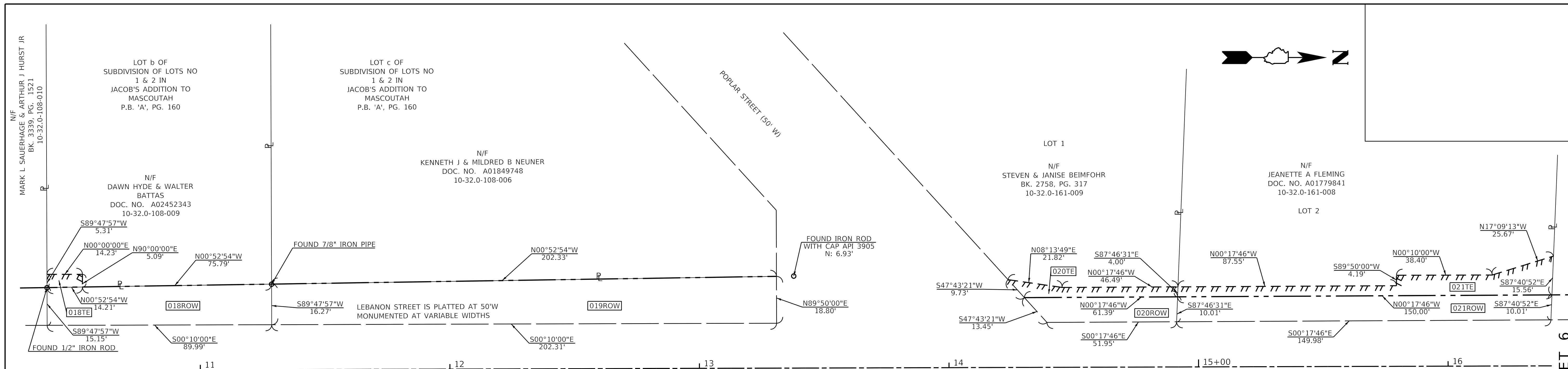
IDPR DESIGN FIRM LICENSE NO. 184-001220

CITY OF MASCOUTAH
RIGHT OF WAY DEDICATION PLAT
 LEBANON STREET,
 GREEN STREET, OAK STREET,
 PATTERSON STREET AND POPLAR STREET
 ST. CLAIR COUNTY
 STA. 5+00 TO STA. 10+40

| | | | |
|--------------------------------|-----------|--------------|-----------|
| JOB NO.: T32200322 | COUNTY | TOTAL SHEETS | SHEET NO. |
| LEBANON, PATTERSON, AND OAK ST | ST. CLAIR | 9 | 4 |

SHEET 1 IS A COVER SHEET

PART OF THE NW 1/4 OF SECTION 32, T1N, R6W, OF THE 3RD PM, ST. CLAIR COUNTY, ILLINOIS



| OWNER | FEE SIMPLE ACQUISITION | | TEMPORARY CONSTRUCTION EASEMENT | | PERMANENT EASEMENT | | EASEMENT PURPOSE | PERMANENT TAX NUMBER |
|----------------------------------|------------------------|---------|---------------------------------|---------|--------------------|---------|-----------------------------------|----------------------|
| | ACRES | SQ. FT. | ACRES | SQ. FT. | ACRES | SQ. FT. | | |
| DAWN HYDE & WALTER BATTAS 018 | 0.0325 | 1,414 | 0.0017 | 74 | N/A | N/A | SIDEWALK CONSTRUCTION AND GRADING | 10-32.0-108-009 |
| KENNETH J & MILDRED B NEUNER 019 | 0.0815 | 3,548 | N/A | N/A | N/A | N/A | N/A | 10-32.0-108-006 |
| STEVEN & JANISE BEIMFOHR 020 | 0.0130 | 567 | 0.0065 | 283 | N/A | N/A | N/A | 10-32.0-161-009 |
| JEANETTE A FLEMING 021 | 0.0344 | 1,500 | 0.0218 | 948 | N/A | N/A | SIDEWALK CONSTRUCTION AND GRADING | 10-32.0-161-008 |

THIS PROFESSIONAL SERVICE CONFORMS TO THE CURRENT MINIMUM STANDARDS FOR A BOUNDARY SURVEY.

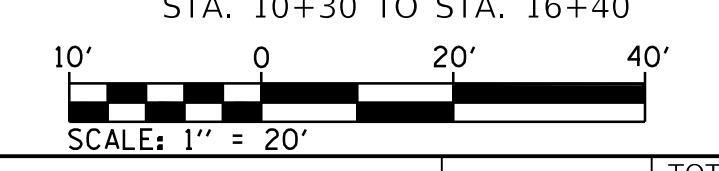
PREPARED BY:
THOUVENOT, WADE & MOERCHEN, INC.
SWANSEA • WATERLOO • EDWARDSVILLE • ST. LOUIS • ST. CHARLES

CORPORATE OFFICE
4940 Old Collinsville Road
Swansea, Illinois 62226
Tel: 618.624.4488
Fax: 618.624.6688



IDPR DESIGN FIRM LICENSE NO. 184-001220

CITY OF MASCOUTAH
RIGHT OF WAY DEDICATION PLAT
LEBANON STREET,
GREEN STREET, OAK STREET,
PATTERSON STREET AND POPLAR STREET
ST. CLAIR COUNTY
STA. 10+30 TO STA. 16+40

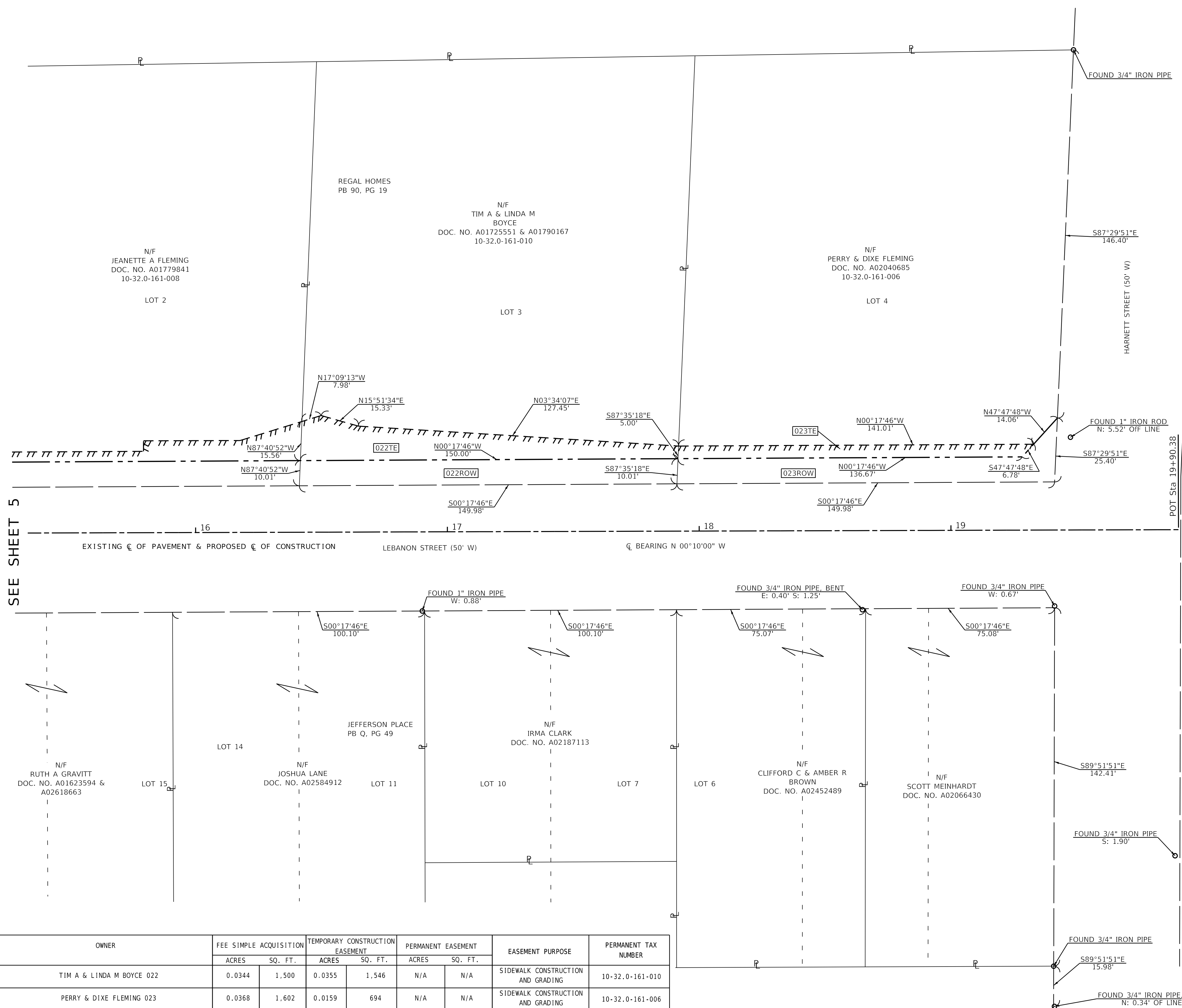


| | | | |
|----------------------------|-----------|--------------|-----------|
| JOB NO.: T32200322 | COUNTY | TOTAL SHEETS | SHEET NO. |
| LEBANON AND POPLAR STREETS | ST. CLAIR | 9 | 5 |

SHEET 1 IS A COVER SHEET

SEE SHEET 4

SEE SHEET 6



SEE SHEET 5

POT Sta 19+90.38

PREPARED BY:
THOUVENOT, WADE & MOERCHEN, INC.

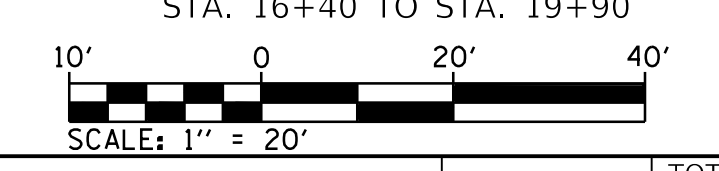
SWANSEA • WATERLOO • EDWARDSVILLE • ST. LOUIS • ST. CHARLES

CORPORATE OFFICE
 4940 Old Collinsville Road
 Swansea, Illinois 62226
 Tel: 618.624.4488
 Fax: 618.624.6688



IDPR DESIGN FIRM LICENSE NO. 184-001220

CITY OF MASCOUTAH
RIGHT OF WAY DEDICATION PLAT
 LEBANON STREET,
 GREEN STREET, OAK STREET,
 PATTERSON STREET & POPLAR STREET
 ST. CLAIR COUNTY
 STA. 16+40 TO STA. 19+90



| | | | |
|-----------------------------|-----------|--------------|-----------|
| JOB NO.: T32200322 | COUNTY | TOTAL SHEETS | SHEET NO. |
| LEBANON AND HARNETT STREETS | ST. CLAIR | 9 | 6 |

| OWNER | FEE SIMPLE ACQUISITION | | TEMPORARY CONSTRUCTION EASEMENT | | PERMANENT EASEMENT | | EASEMENT PURPOSE | PERMANENT TAX NUMBER |
|---------------------------|------------------------|---------|---------------------------------|---------|--------------------|---------|-----------------------------------|----------------------|
| | ACRES | SQ. FT. | ACRES | SQ. FT. | ACRES | SQ. FT. | | |
| TIM A & LINDA M BOYCE 022 | 0.0344 | 1,500 | 0.0355 | 1,546 | N/A | N/A | SIDEWALK CONSTRUCTION AND GRADING | 10-32.0-161-010 |
| PERRY & DIXE FLEMING 023 | 0.0368 | 1,602 | 0.0159 | 694 | N/A | N/A | SIDEWALK CONSTRUCTION AND GRADING | 10-32.0-161-006 |

STATE OF ILLINOIS)
)SS
COUNTY OF ST. CLAIR)

I/WE, _____, OWNER(S) IN FEE OF A PORTION OF THE PROPERTY EMBRACED WITHIN THIS PLAT, ACKNOWLEDGING THE PLAT TO BE THEIR FREE AND VOLUNTARY ACT, DEDICATING TO THE PUBLIC USE FOREVER THE STREETS AND PERMANENT EASEMENTS SHOWN THEREON. FURTHERMORE, THE PLAT SHALL INCLUDE THE DEDICATION AND RESERVATION TO THE PUBLIC OF ANY RIGHT-OF-WAY OR PERMANENT EASEMENT SHOWN THEREON AND THE EXECUTION OF THIS DEDICATION PLAT BY THE OWNER IN FEE SHALL ALSO BE REPRESENTATION AND WARRANTY BY THE OWNER IN FEE THAT THE PLAT IS TRUE AND CORRECT IN ALL RESPECTS AND THAT THE OWNER IN FEE WILL FOREVER PROTECT AND FULLY INDEMNIFY THE CITY, AND PUBLIC UTILITY OR OTHER PERSON OR ENTITY BENEFITED BY ANY EASEMENTS OR RIGHT-OF-WAY SHOWN ON THIS DEDICATION PLAT FROM ANY CLAIM, INCLUDING ANY ATTORNEY OR PROFESSIONAL FEES INCURRED AS A RESULT OF RELIANCE UPON SUCH PLAT. THE OWNER IN FEE ALSO DEDICATES THE TEMPORARY CONSTRUCTION EASEMENTS SHOWN HEREON FOR THE USE OF THE CITY UNTIL SIX (6) MONTHS AFTER THE COMPLETION OF CONSTRUCTION.

IN WITNESS WHEREOF, I HAVE HEREUNTO SET MY HAND AND SEAL ON THIS _____ DAY OF _____, 2021.

OWNER _____ OWNER _____

STATE OF ILLINOIS)
)SS
COUNTY OF ST. CLAIR)

THIS INSTRUMENT WAS ACKNOWLEDGED BEFORE ME ON _____, 2021 BY _____

(SEAL) SIGNATURE OF NOTARY PUBLIC _____

PREPARED BY:
THOUVENOT, WADE & MOERCHEN, INC.

SWANSEA • WATERLOO • EDWARDSVILLE • ST. LOUIS • ST. CHARLES

CORPORATE OFFICE
4940 Old Collinsville Road
Swansea, Illinois 62226
Tel: 618.624.4488
Fax: 618.624.6688



IDPR DESIGN FIRM LICENSE NO. 184-001220

CITY OF MASCOUTAH
RIGHT OF WAY DEDICATION PLAT
LEBANON STREET,
GREEN STREET, OAK STREET,
PATTERSON STREET AND POPLAR STREET
ST. CLAIR COUNTY, ILLINOIS

| JOB NO.: | COUNTY | TOTAL SHEETS | SHEET NO. |
|-----------|-----------|--------------|-----------|
| T32200322 | ST. CLAIR | 9 | 9 |