

F.A. RTE.	SECTION	COUNTY	TOTAL SHEETS	SHEET NO.
		ST. CLAIR	99	1
		ILLINOIS	CONTRACT NO.	

INDEX OF SHEETS

- 1 COVER SHEET
- 2 GENERAL NOTES, HIGHWAY STANDARDS & COMMITMENTS
- 3 SUMMARY OF QUANTITIES
- 4-6 TYPICAL SECTIONS
- 7-9 SCHEDULE OF QUANTITIES
- 10-13 REMOVAL PLAN
- 14-21 PLAN AND PROFILE SHEETS
- 22-29 DRAINAGE AND EROSION CONTROL
- 30-33 RIGHT-OF-WAY PLAN
- 34-38 INTERSECTION DETAILS
- 39-42 PAVEMENT MARKING & SIGNAGE SHEETS
- 43-46 MISCELLANEOUS DETAILS
- CROSS SECTIONS
- 47-77 N. LEBANON ST.
- 78-83 E. GREEN ST. 1
- 84-88 E. GREEN ST. 2
- 89-94 E. PATTERSON ST.
- 95-99 E. OAK ST.

PLANS FOR PROPOSED NORTH LEBANON STREET RECONSTRUCTION

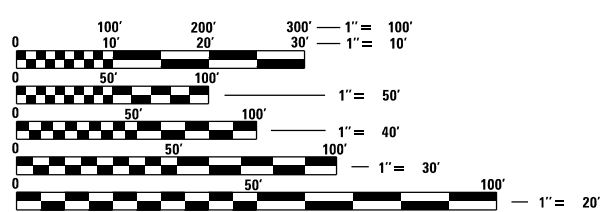
**CITY OF MASCOUTAH
ST. CLAIR COUNTY**

LIST OF HIGHWAY STANDARDS

SEE SHEET 2 FOR LIST OF HIGHWAY STANDARDS

DESIGN DESIGNATION

ROUTE NUMBER 6180 (NORTH LEBANON STREET)
ROADWAY CLASSIFICATION = LOCAL ROAD
DESIGN SPEED = 30 MPH
ADT (2021) = XXX VPD
ADT (2041) = XXX VPD



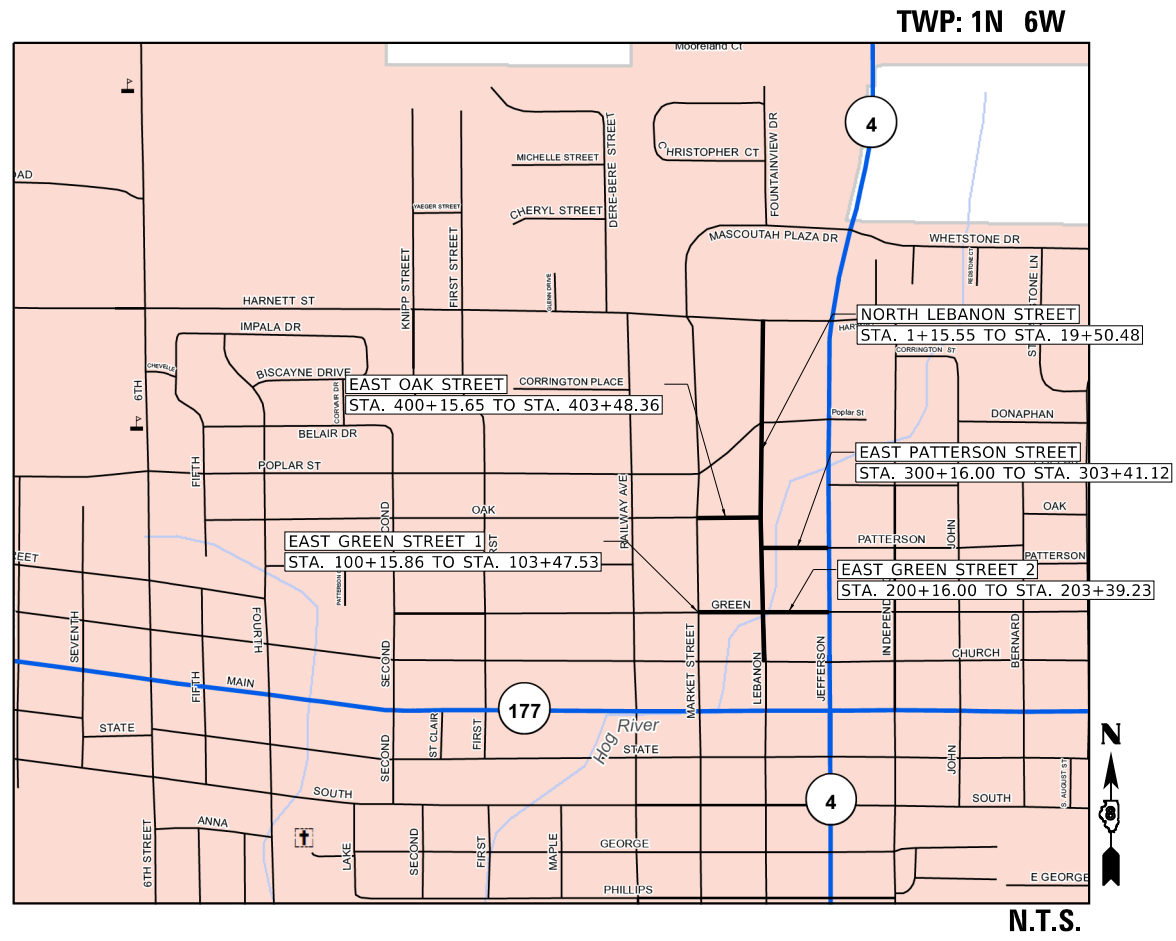
FULL SIZE PLANS HAVE BEEN PREPARED USING STANDARD ENGINEERING SCALES. REDUCED SIZED PLANS WILL NOT CONFORM TO STANDARD SCALES. IN MAKING MEASUREMENTS ON REDUCED PLANS, THE ABOVE SCALES MAY BE USED.

J.U.L.I.E.
 JOINT UTILITY LOCATION INFORMATION FOR EXCAVATORS
 1-800-892-0123
 OR 811

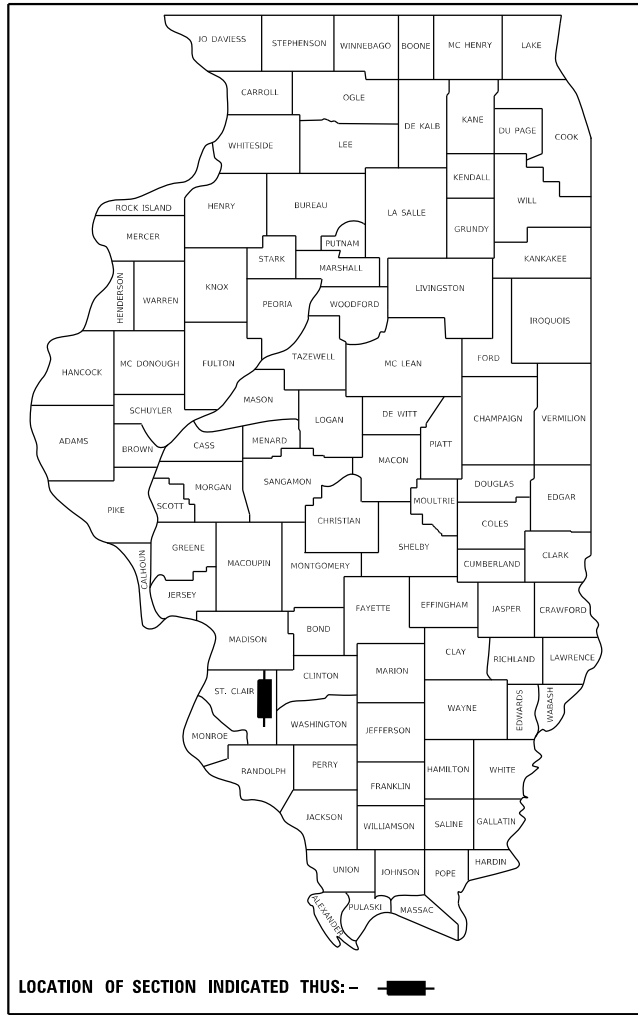
PLANS PREPARED BY:

4940 Old Collinsville Road
 Swansea, Illinois 62226
 Tel: 618.624.4488
 www.twm-inc.com

Illinois Professional Design Firm
 No. 184-001220
 License Expires: 04/30/2023



(TOTAL) GROSS LENGTH = 3147.66 FT. = 0.596 MILE	(TOTAL) NET LENGTH = 3147.66 FT. = 0.596 MILE
LEBANON = 1834.93 FT. = 0.348 MILE	LEBANON = 1834.93 FT. = 0.348 MILE
GREEN 1 = 331.67 FT. = 0.063 MILE	GREEN 1 = 331.67 FT. = 0.063 MILE
GREEN 2 = 323.23 FT. = 0.061 MILE	GREEN 2 = 323.23 FT. = 0.061 MILE
PATTERSON = 325.12 FT. = 0.062 MILE	PATTERSON = 325.12 FT. = 0.062 MILE
OAK = 332.71 FT. = 0.063 MILE	OAK = 332.71 FT. = 0.063 MILE



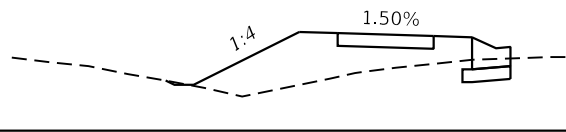
JEFFREY R. REIS, P.E. **EXPIRATION DATE**
LICENSE NO. 062-063262 **11-30-2023**

CITY OF MASCOUTAH
 STATE OF ILLINOIS

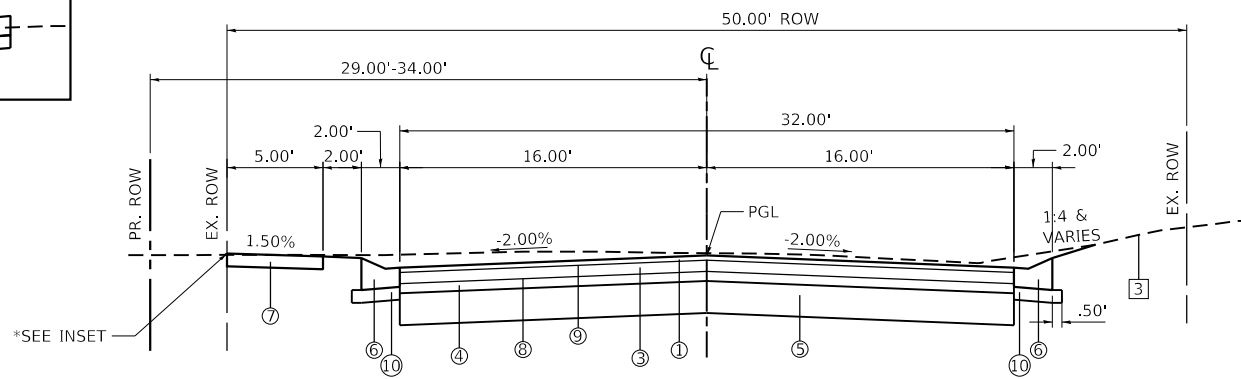
APPROVED _____ 20____

 MAYOR, CITY OF MASCOUTAH

STA. 14+51.29 TO STA. 15+78.62
 STA. 16+50.00 TO STA. 18+00.00



INSET



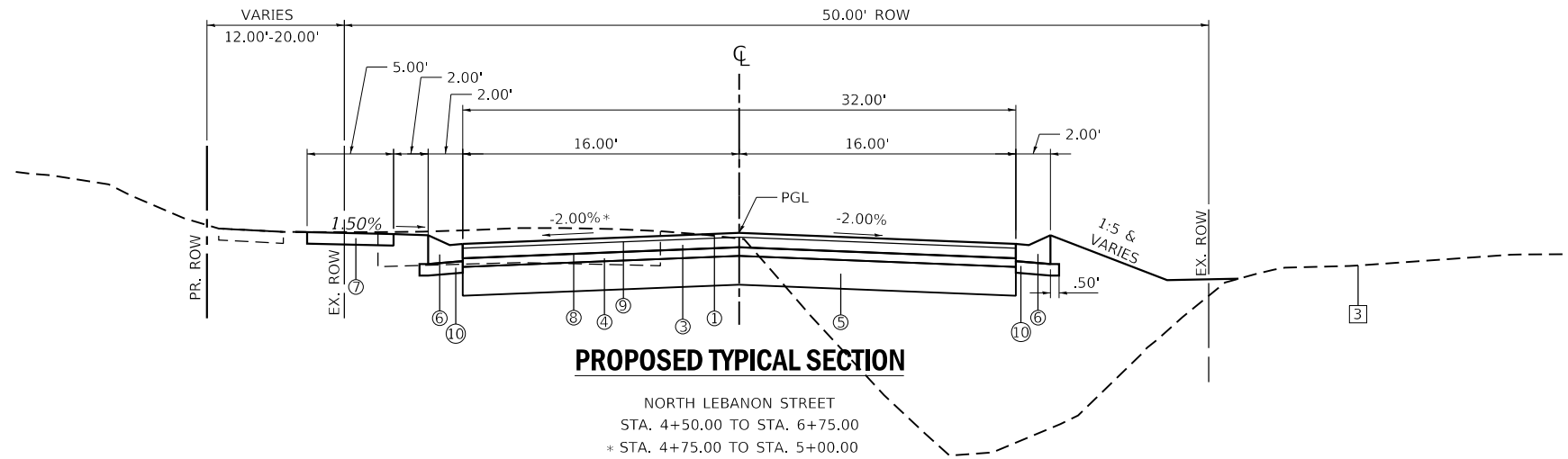
PROPOSED TYPICAL SECTION

NORTH LEBANON STREET
 STA. 1+15.55 TO STA. 4+50.00
 STA. 6+75.00 TO STA. 19+50.48
 OMISSIONS (SEE INTERSECTION DETAIL SHEETS)
 STA. 1+15.55 TO STA. 1+37.64
 STA. 3+25.25 TO STA. 4+04.14
 STA. 6+72.14 TO STA. 7+45.24
 STA. 8+43.94 TO STA. 9+13.96
 STA. 13+34.78 TO STA. 14+51.28
 STA. 19+28.87 TO STA. 19+50.48

LEGEND

- 1 EXISTING PAVEMENT, 2.5"
- 2 EXISTING PCC SIDEWALK, 4"
- 3 EXISTING GROUND
- 4 EXISTING AGGREGATE BASE, 12"

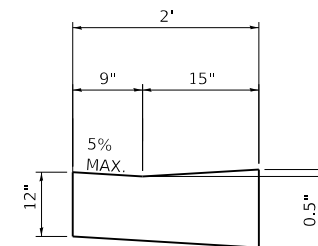
- 1 PROPOSED HOT-MIX ASPHALT SURFACE COURSE, IL-9.5, MIX "C", N70, 1.5"
- 2 PROPOSED HOT-MIX ASPHALT BINDER COURSE, IL-19.0, N70, 2.5"
- 3 PROPOSED HOT-MIX ASPHALT BINDER COURSE, IL-19.0, N70, 3.5"
- 4 PROPOSED AGGREGATE BASE COURSE, TY B, 3"
- 5 PROPOSED SUBBASE GRANULAR MATERIAL, TYPE B 10"
- 6 PROPOSED CONCRETE GUTTER (SPECIAL)
- 7 PROPOSED PCC SIDEWALK, 4"
- 8 PR. BITUMINOUS MATERIALS (PRIME COAT)
- 9 PR. BITUMINOUS MATERIALS (TACK COAT)
- 10 PROPOSED AGGREGATE BASE COURSE, TY B, 4"



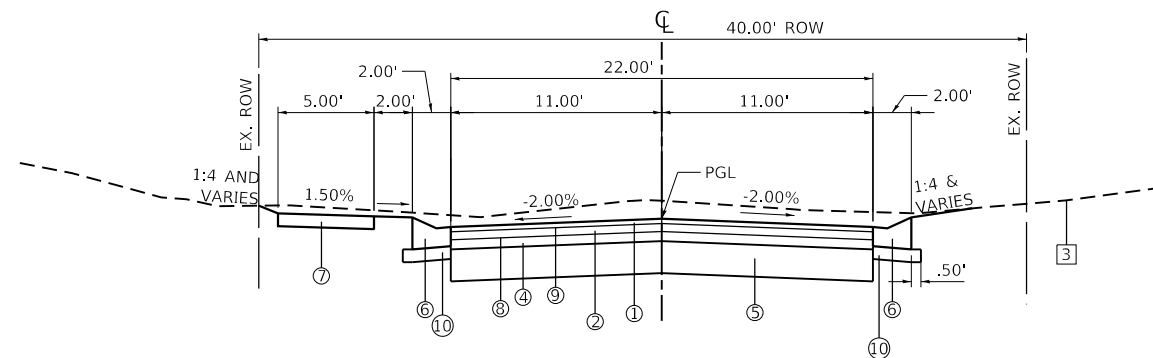
PROPOSED TYPICAL SECTION

NORTH LEBANON STREET
 STA. 4+50.00 TO STA. 6+75.00
 * STA. 4+75.00 TO STA. 5+00.00
 SLOPE VARIES 2.00% TO 2.50%
 STA. 5+00.00 TO STA. 5+25.00
 SLOPE VARIES 2.50% TO 2.00%

CONCRETE GUTTER (SPECIAL) - ADJACENT TO ADA RAMP

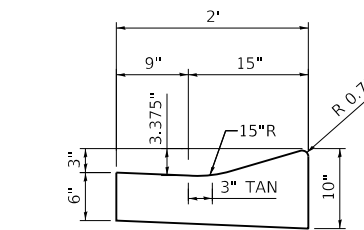


NOT TO SCALE



PROPOSED TYPICAL SECTION

EAST GREEN STREET (1)
 STA. 100+15.86 TO STA. 103+47.53
 OMISSIONS (SEE INTERSECTION DETAIL SHEETS)
 STA. 100+15.86 TO STA. 100+60.94
 STA. 102+91.67 TO STA. 103+47.53



CONCRETE GUTTER (SPECIAL)

NOT TO SCALE

MODEL: Dwg.dwg
 FILE NAME: P:\2020\2003224_CADD - DWG\4.7_TransSheets\200322-Typical Sections.dwg



TWM, INC.
 www.twm-inc.com
 IL DESIGN FIRM
 LICENSE NO:
 184-001220

USER NAME = tgrigsby	DESIGNED - EKF	REVISED -
PLOT SCALE = 10.0000' / in.	DRAWN - EKF	REVISED -
PLOT DATE = 1/6/2022	CHECKED - JWS	REVISED -
	DATE - 1/13/2022	REVISED -



**CITY OF MASCOUTAH
 N LEBANON RECONSTRUCTION**

TYPICAL SECTIONS

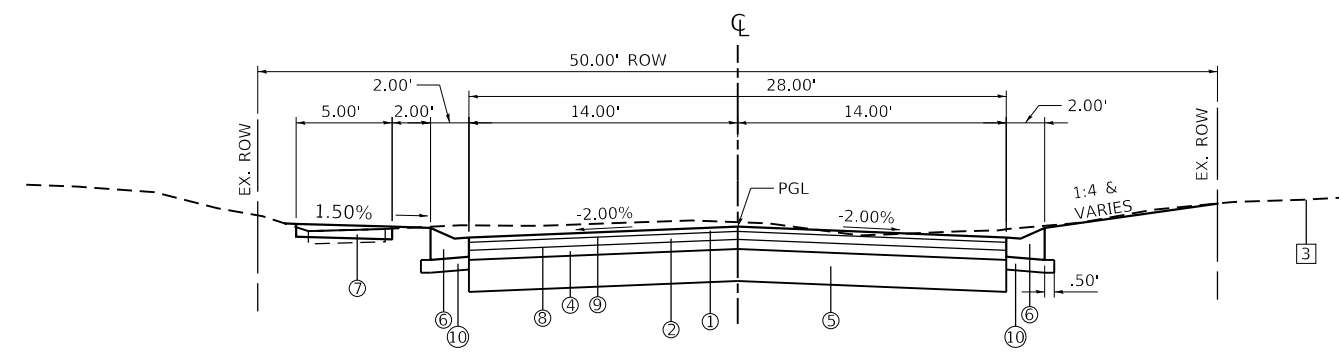
SCALE: NTS SHEET 2 OF 3 SHEETS STA. TO STA.

F.A.U. RTE.	SECTION	COUNTY	TOTAL SHEETS	SHEET NO.
		ST. CLAIR	99	
CONTRACT NO.				
ILLINOIS FED. AID PROJECT				

LEGEND

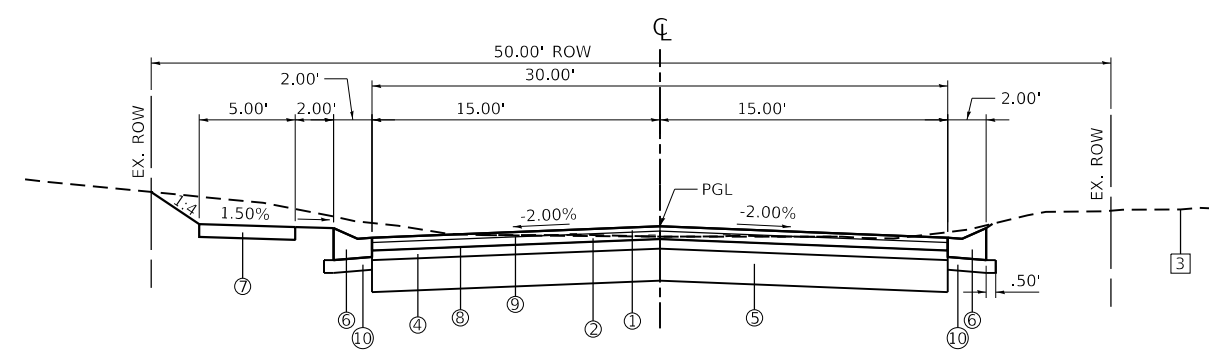
- 1 EXISTING PAVEMENT, 2.5"
- 2 EXISTING PCC SIDEWALK, 4"
- 3 EXISTING GROUND
- 4 EXISTING AGGREGATE BASE, 12"

- 1 PROPOSED HOT-MIX ASPHALT SURFACE COURSE, IL-9.5, MIX "C", N70, 1.5"
- 2 PROPOSED HOT-MIX ASPHALT BINDER COURSE, IL-19.0, N70, 2.5"
- 3 PROPOSED HOT-MIX ASPHALT BINDER COURSE, IL-19.0, N70, 3.5"
- 4 PROPOSED AGGREGATE BASE COURSE, TY B, 3"
- 5 PROPOSED SUBBASE GRANULAR MATERIAL, TYPE B 10"
- 6 PROPOSED CONCRETE GUTTER (SPECIAL)
- 7 PROPOSED PCC SIDEWALK, 4"
- 8 PR. BITUMINOUS MATERIALS (PRIME COAT)
- 9 PR. BITUMINOUS MATERIALS (TACK COAT)
- 10 PROPOSED AGGREGATE BASE COURSE, TY B, 4"



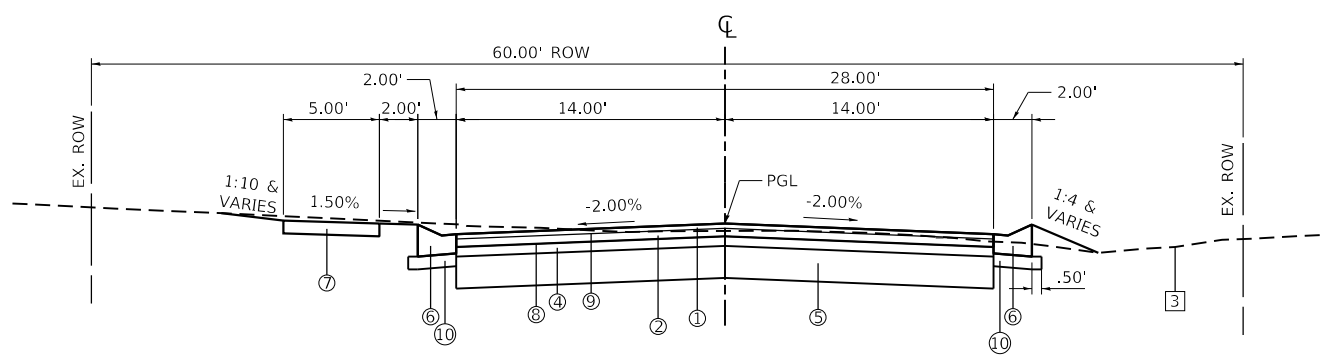
PROPOSED TYPICAL SECTION

EAST GREEN STREET (2)
 STA. 200+16.00 TO STA. 203+39.23
 OMISSIONS (SEE INTERSECTION DETAIL SHEETS)
 STA. 200+16.00 TO STA. 200+40.00
 STA. 202+77.06 TO STA. 203+39.23



PROPOSED TYPICAL SECTION

EAST PATTERSON STREET
 STA. 300+16.00 TO STA. 303+41.12
 OMISSIONS (SEE INTERSECTION DETAIL SHEETS)
 STA. 300+16.00 TO STA. 300+56.51
 STA. 302+73.28 TO STA. 303+41.12



PROPOSED TYPICAL SECTION

EAST OAK STREET
 STA. 400+15.65 TO STA. 403+48.36
 OMISSIONS (SEE INTERSECTION DETAIL SHEETS)
 STA. 400+15.65 TO STA. 400+47.60
 STA. 403+26.64 TO STA. 403+48.36

MODEL: D:\p\11
 FILE NAME: P:\2020\2003224_CADD - DWG\4.7_Trans\Sheet3\0322-Typical Sections.dgn



TWM, INC.
 www.twm-inc.com
 IL DESIGN FIRM
 LICENSE NO:
 184-001220

USER NAME = tgrigsby	DESIGNED - EKF	REVISED -
	DRAWN - EKF	REVISED -
PLOT SCALE = 10.0000' / in.	CHECKED - JWS	REVISED -
PLOT DATE = 1/6/2022	DATE - 1/13/2022	REVISED -



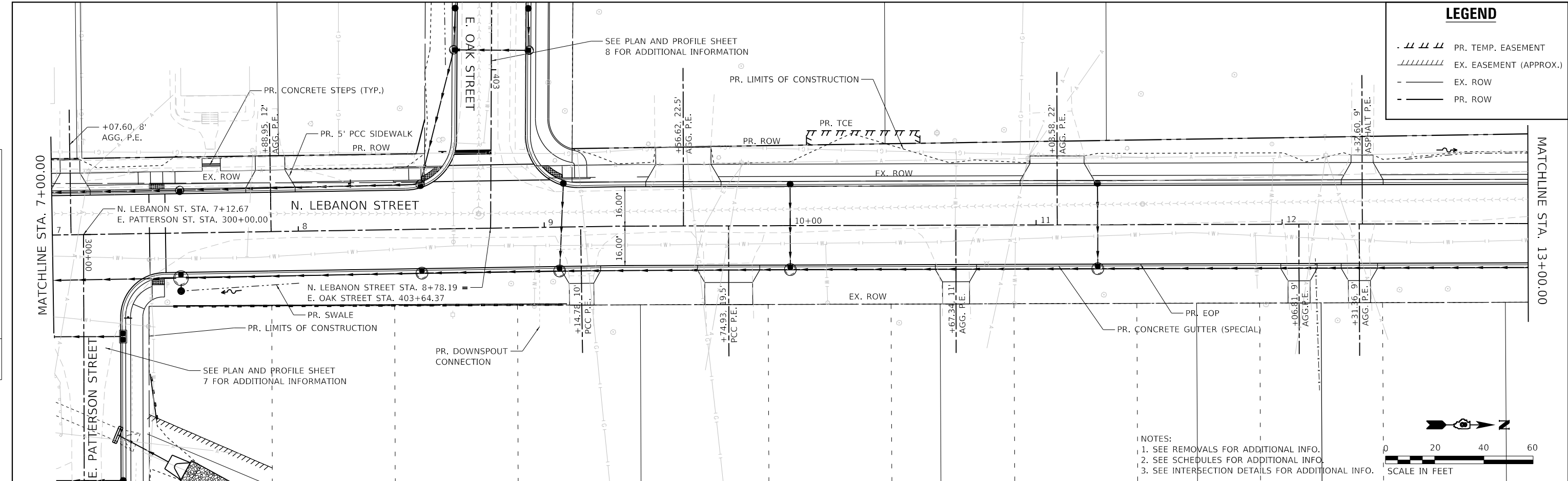
**CITY OF MASCOUTAH
 N LEBANON RECONSTRUCTION**

TYPICAL SECTIONS			
SCALE: NTS	SHEET 3	OF 3 SHEETS	STA. TO STA.

F.A.U. RTE.	SECTION	COUNTY	TOTAL SHEETS	SHEET NO.
		ST. CLAIR	99	
CONTRACT NO.				
ILLINOIS FED. AID PROJECT				

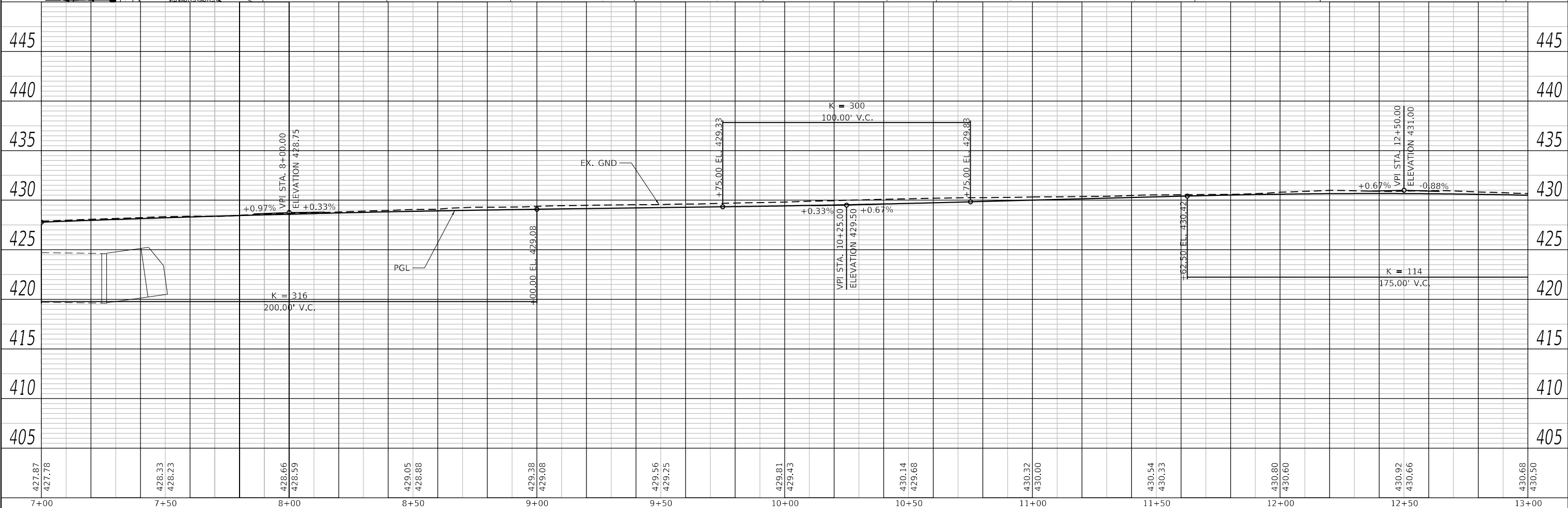
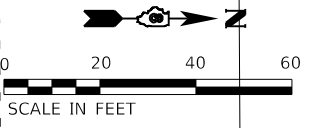
PLAN	SURVEYED	DATE
	PLOTTED	BY
	ALIGNMENT CHECKED	
	NOTE BOOK	
	NO.	
	FILE NAME	
	NO.	

PROFILE	SURVEYED	DATE
	PLOTTED	BY
	GRADES CHECKED	
	NOTE BOOK	
	NO.	
	FILE NAME	
	NO.	



LEGEND	
	PR. TEMP. EASEMENT
	EX. EASEMENT (APPROX.)
	EX. ROW
	PR. ROW

NOTES:
 1. SEE REMOVALS FOR ADDITIONAL INFO.
 2. SEE SCHEDULES FOR ADDITIONAL INFO.
 3. SEE INTERSECTION DETAILS FOR ADDITIONAL INFO.



427.87 427.78	428.33 428.23	428.66 428.59	429.05 428.88	429.38 429.08	429.56 429.25	429.81 429.43	430.14 429.68	430.32 430.00	430.54 430.33	430.80 430.60	430.92 430.66	430.68 430.50
7+00	7+50	8+00	8+50	9+00	9+50	10+00	10+50	11+00	11+50	12+00	12+50	13+00

TWM
 ENGINEERING
 GEOSPATIAL SERVICES

TWM, INC.
 WWW.TWM-INC.COM
 IL DESIGN FIRM
 LICENSE NO: 184-001220

USER NAME = tgrigsby
 PLOT SCALE = 40,0000 ' / in.
 PLOT DATE = 1/5/2022

DESIGNED - EKF
 DRAWN - EKF
 CHECKED - JWS
 DATE - 1-1-2022

REVISED -
 REVISED -
 REVISED -
 REVISED -



**CITY OF MASCOUTAH
 N LEBANON RECONSTRUCTION**

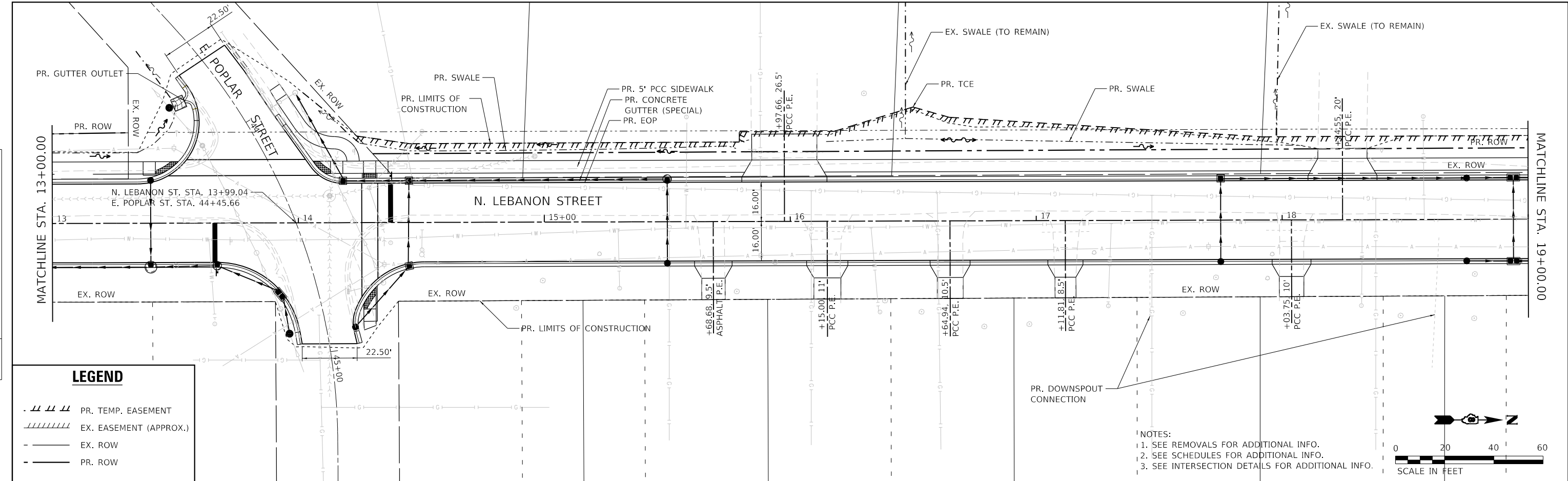
**PLAN AND PROFILE
 NORTH LEBANON STREET**

SCALE: 1"=20' SHEET 2 OF 8 SHEETS STA. 7+00.00 TO STA. 13+00.00

F.A.U. R.T.E.	SECTION	COUNTY	TOTAL SHEETS	SHEET NO.
		ST. CLAIR	99	15
CONTRACT NO.				
ILLINOIS FED. AID PROJECT				

PLAN	SURVEYED	DATE
	PLOTTED	BY
	ALIGNMENT CHECKED	
	NOTE BOOK	
	NO.	
	CADD FILE NAME	

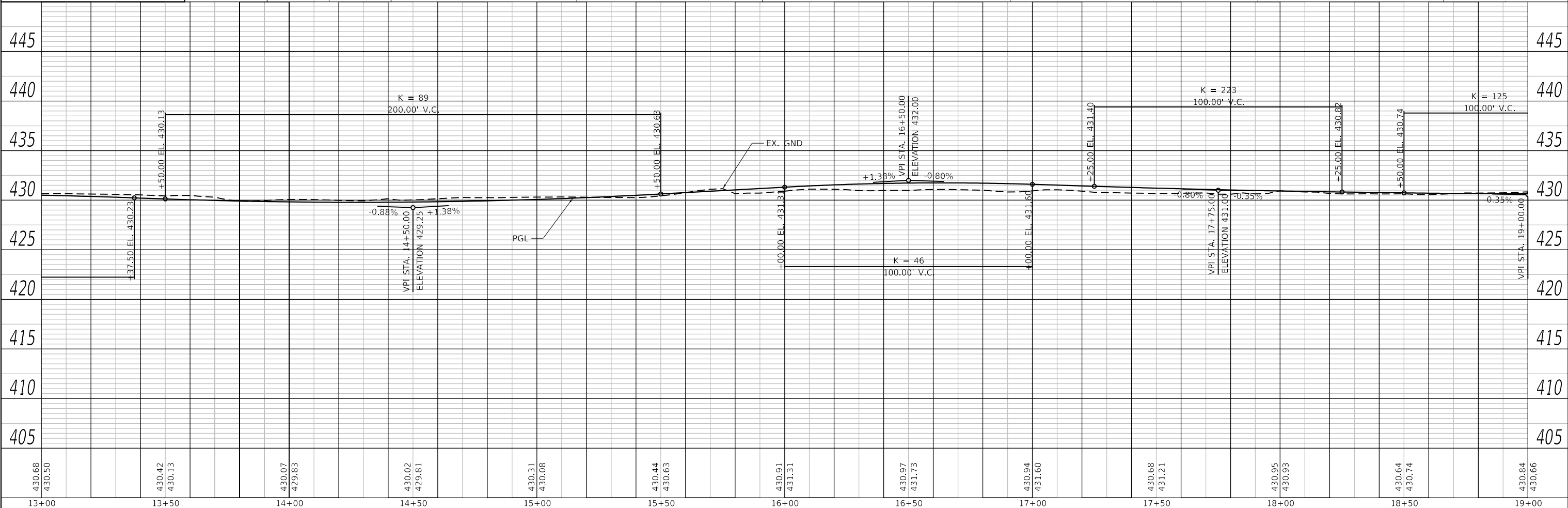
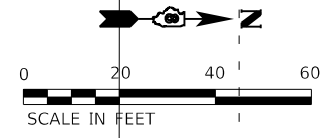
PROFILE	SURVEYED	DATE
	PLOTTED	BY
	GRADES CHECKED	
	NOTE BOOK	
	NO.	
	STRUCTURE NOTATIONS CHWID	



LEGEND

- PR. TEMP. EASEMENT
- EX. EASEMENT (APPROX.)
- EX. ROW
- PR. ROW

NOTES:
 1. SEE REMOVALS FOR ADDITIONAL INFO.
 2. SEE SCHEDULES FOR ADDITIONAL INFO.
 3. SEE INTERSECTION DETAILS FOR ADDITIONAL INFO.



MODEL: Default
 FILE NAME: P:\2020\20200322\4 CADD - DWG\4.7 Tran\Sheets\202022-shp\planprf3.dgn

430.68 430.50	430.42 430.13	430.07 429.83	430.02 429.81	430.31 430.08	430.44 430.63	430.91 431.31	430.97 431.73	430.94 431.60	430.68 431.21	430.95 430.93	430.64 430.74	430.84 430.66
13+00	13+50	14+00	14+50	15+00	15+50	16+00	16+50	17+00	17+50	18+00	18+50	19+00

TWM
 ENGINEERING
 GEOSPATIAL SERVICES

TWM, INC.
 WWW.TWM-INC.COM
 IL DESIGN FIRM
 LICENSE NO:
 184-001220

USER NAME = tgrigsby
 PLOT SCALE = 40.0000 ' / in.
 PLOT DATE = 1/5/2022

DESIGNED - EKF	REVISED -
DRAWN - EKF	REVISED -
CHECKED - JWS	REVISED -
DATE - 1-1-2022	REVISED -



**CITY OF MASCOUTAH
 N LEBANON RECONSTRUCTION**

**PLAN AND PROFILE
 NORTH LEBANON STREET**

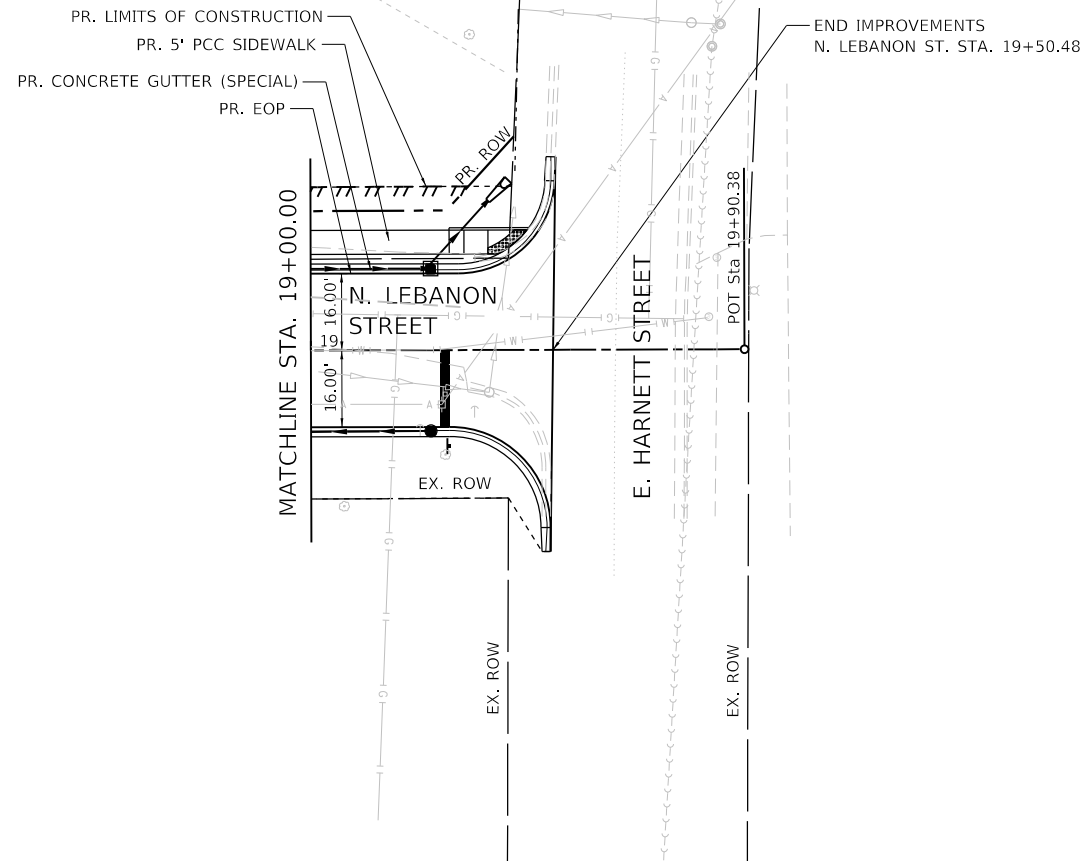
SCALE: 1"=20' SHEET 3 OF 8 SHEETS STA. 13+00.00 TO STA. 19+00.00

F.A.U. RTE.	SECTION	COUNTY	TOTAL SHEETS	SHEET NO.
		ST. CLAIR	99	16
CONTRACT NO.				
ILLINOIS FED. AID PROJECT				

PLAN	SURVEYED	BY	DATE
	PLOTTED		
	ALIGNMENT CHECKED		
	NOTE BOOK		
	NO.		
	CADD FILE NAME		

PROFILE	SURVEYED	BY	DATE
	PLOTTED		
	GRADES CHECKED		
	NOTE BOOK		
	NO.		
	STRUCTURE NOTATIONS CHECKED		

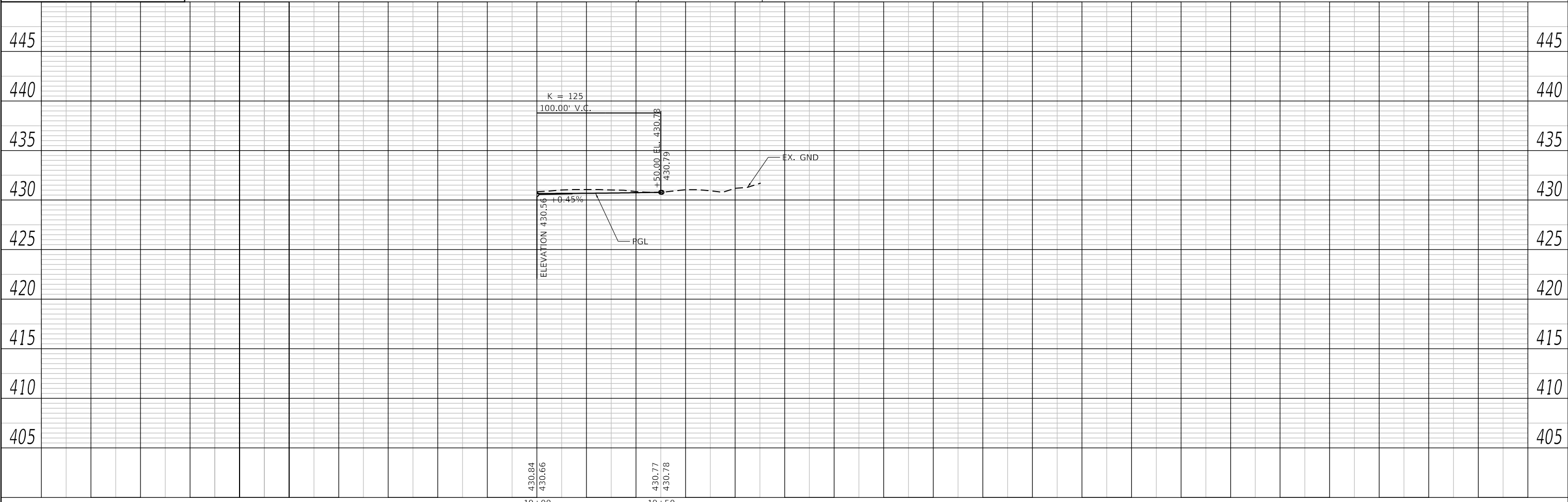
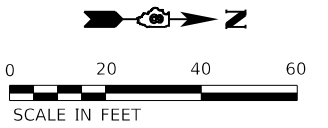
MODEL: Default
FILE NAME: P:\2022\20220322\4_CADD - DWG\4.7 Tran\Sheets\20022-shp\planprf4.dwg



LEGEND

- PR. TEMP. EASEMENT
- EX. EASEMENT (APPROX.)
- EX. ROW
- PR. ROW

- NOTES:
 1. SEE REMOVALS FOR ADDITIONAL INFO.
 2. SEE SCHEDULES FOR ADDITIONAL INFO.
 3. SEE INTERSECTION DETAILS FOR ADDITIONAL INFO.



TWM
 ENGINEERING
 GEOSPATIAL SERVICES

TWM, INC.
 WWW.TWM-INC.COM
 IL DESIGN FIRM
 LICENSE NO: 184-001220

USER NAME	= tgrigsby
PLOT SCALE	= 40.0000 ' / in.
PLOT DATE	= 1/5/2022

DESIGNED	- EKF	REVISED	-
DRAWN	- EKF	REVISED	-
CHECKED	- JWS	REVISED	-
DATE	- 1-1-2022	REVISED	-



CITY OF MASCOUTAH
N LEBANON RECONSTRUCTION

PLAN AND PROFILE
NORTH LEBANON STREET

SCALE: 1"=20' SHEET 4 OF 8 SHEETS STA. 19+00.00 TO STA. 19+90.38

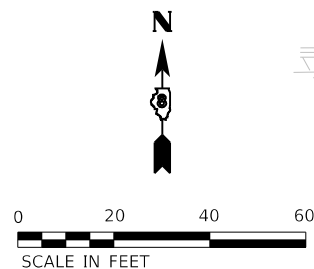
F.A.U. RTE.	SECTION	COUNTY	TOTAL SHEETS	SHEET NO.
		ST. CLAIR	99	17
CONTRACT NO.				
ILLINOIS FED. AID PROJECT				

LEGEND

- PR. TEMP. EASEMENT
- EX. EASEMENT (APPROX.)
- EX. ROW
- PR. ROW

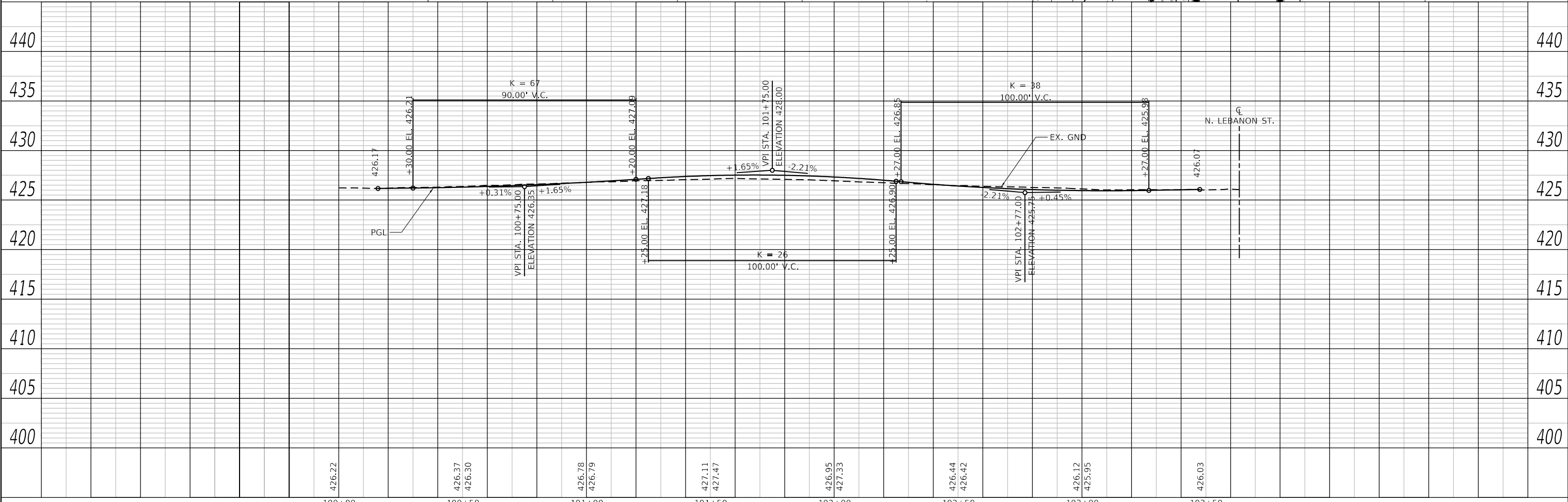
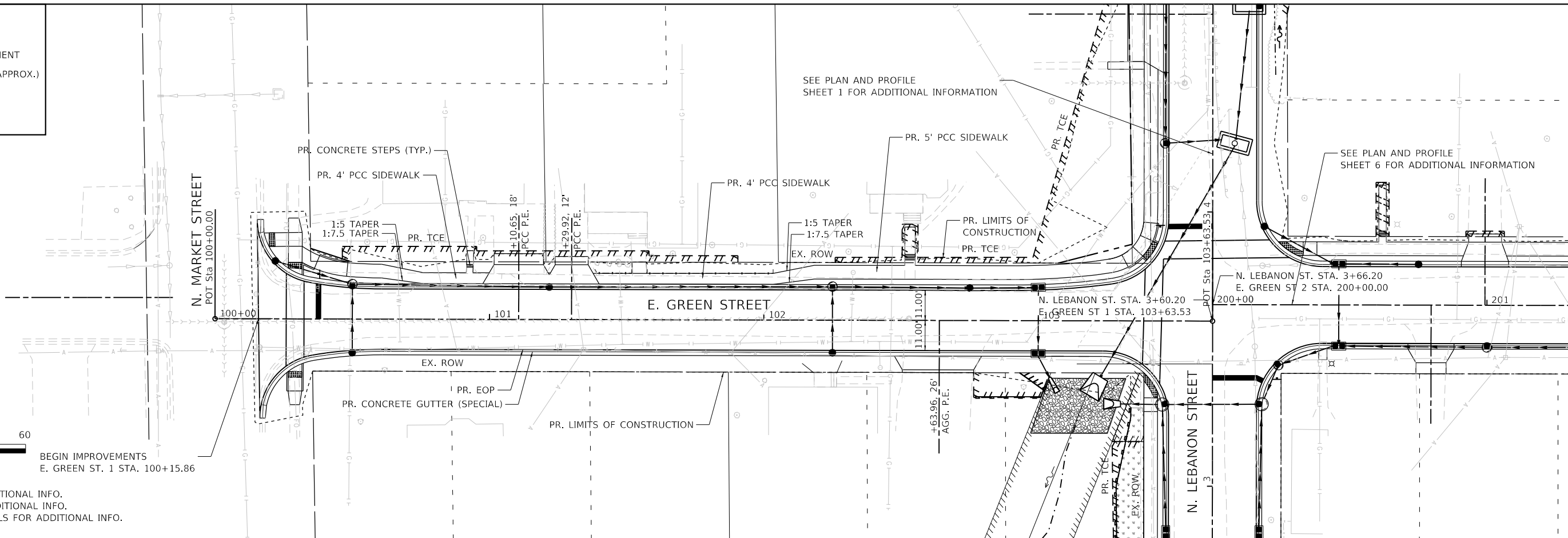
PLAN	SURVEYED	DATE
	PLOTTED	
	ALIGNMENT CHECKED	
	NOTE BOOK	
	CADD FILE NAME	
	NO.	

PROFILE	SURVEYED	DATE
	PLOTTED	
	GRADES CHECKED	
	NOTE BOOK	
	STRUCTURE NOTATIONS CHECKED	
	NO.	



BEGIN IMPROVEMENTS
E. GREEN ST. 1 STA. 100+15.86

- NOTES
1. SEE REMOVALS FOR ADDITIONAL INFO.
 2. SEE SCHEDULES FOR ADDITIONAL INFO.
 3. SEE INTERSECTION DETAILS FOR ADDITIONAL INFO.



100+00	100+50	101+00	101+50	102+00	102+50	103+00	103+50
--------	--------	--------	--------	--------	--------	--------	--------

426.22	426.37	426.30	426.78	426.79	427.11	427.47	426.95	427.33	426.44	426.42	426.12	425.95	426.03
--------	--------	--------	--------	--------	--------	--------	--------	--------	--------	--------	--------	--------	--------



USER NAME = tgrigsby
DESIGNED - EKF
DRAWN - EKF
CHECKED - JWS
DATE - 1-1-2022

REVISED -
REVISED -
REVISED -
REVISED -



**CITY OF MASCOUTAH
N LEBANON RECONSTRUCTION**

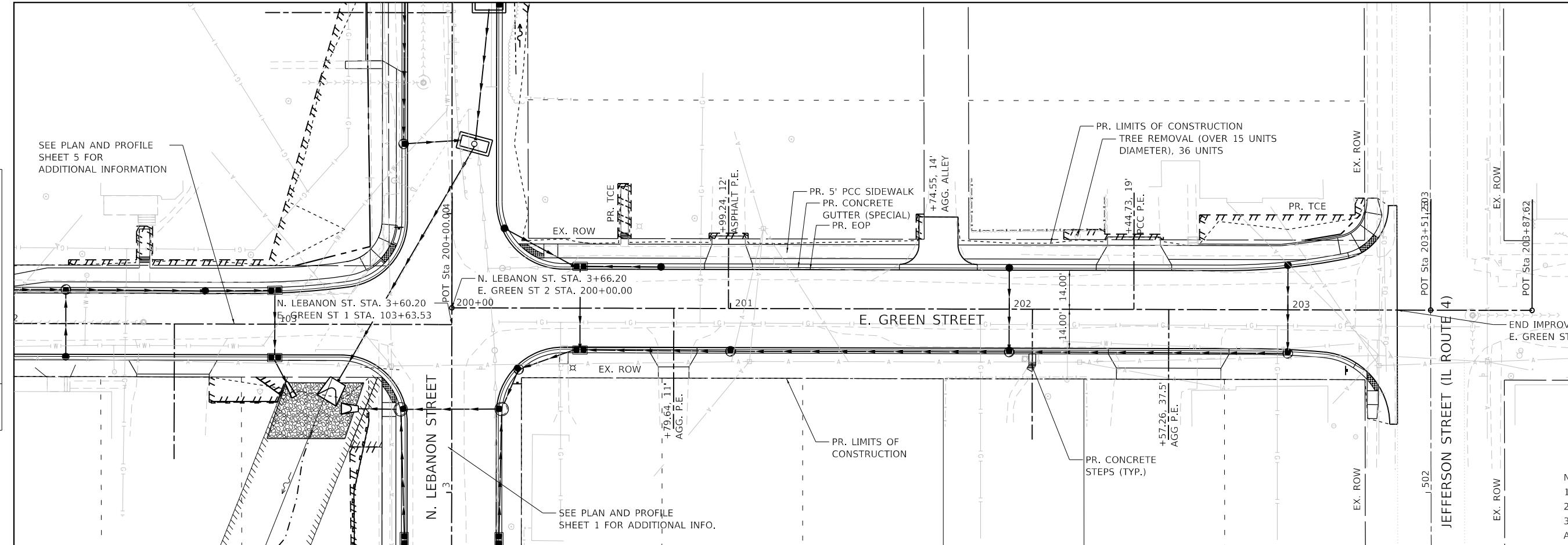
**PLAN AND PROFILE
EAST GREEN STREET 1**
SCALE: 1"=20'
SHEET 5 OF 8 SHEETS
STA. 100+00.00 TO STA. 103+68.24

F.A.U. RTE.	SECTION	COUNTY	TOTAL SHEETS	SHEET NO.
		ST. CLAIR	99	18
CONTRACT NO.				
ILLINOIS FED. AID PROJECT				

MODEL: Default
FILE NAME: P:\2020\20200322\4 CADD - DWG\4.7 Tran\Sheets\300322-shp\planprf5.dwg

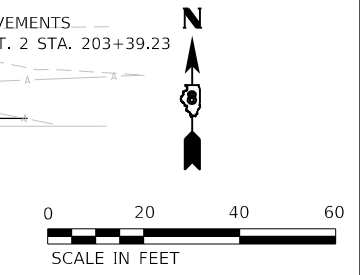
PLAN	SURVEYED	DATE
	PLOTTED	
	ALIGNMENT CHECKED	
	NOTE BOOK	
	NO.	
	CADD FILE NAME	
	NO.	

PROFILE	SURVEYED	DATE
	PLOTTED	
	GRADES CHECKED	
	NOTE BOOK	
	NO.	
	STRUCTURE NOTATIONS CHECKED	
	NO.	

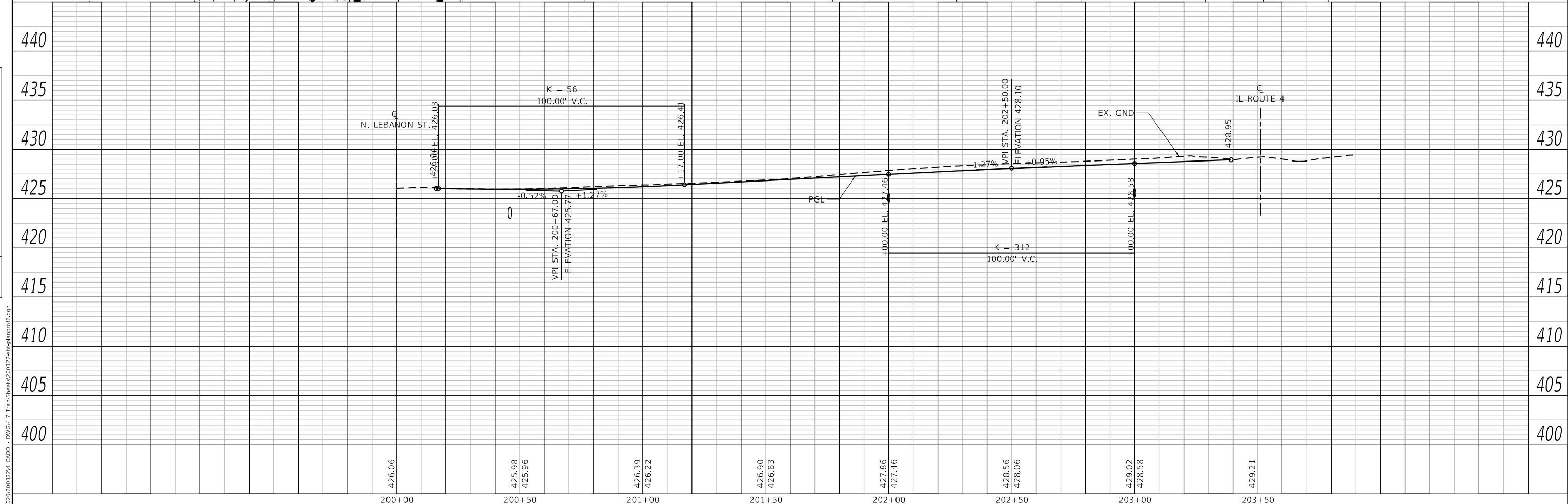


LEGEND

- PR. TEMP. EASEMENT
- EX. EASEMENT (APPROX.)
- EX. ROW
- PR. ROW



- NOTES:
- SEE REMOVALS FOR ADDITIONAL INFO.
 - SEE SCHEDULES FOR ADDITIONAL INFO.
 - SEE INTERSECTION DETAILS FOR ADDITIONAL INFO.



TWM ENGINEERING GEOSPATIAL SERVICES

TWM, INC.
WWW.TWM-INC.COM

IL DESIGN FIRM LICENSE NO: 184-001220

USER NAME = tgrigsby	DESIGNED - EKF	REVISED -
PLOT SCALE = 40.0000' / in.	DRAWN - EKF	REVISED -
PLOT DATE = 1/5/2022	CHECKED - JWS	REVISED -
	DATE - 1-1-2022	REVISED -



CITY OF MASCOUTAH
N LEBANON RECONSTRUCTION

PLAN AND PROFILE
EAST GREEN STREET 2

SCALE: 1"=20'

SHEET 6 OF 8 SHEETS

STA. 200+00.00 TO STA. 203+88.73

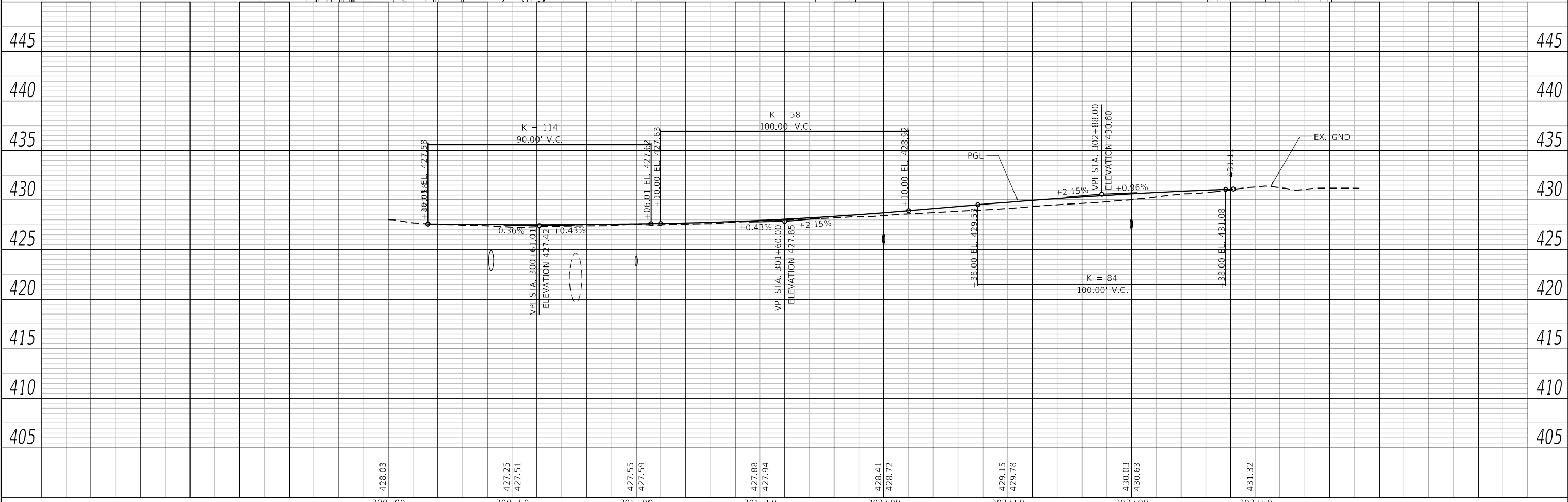
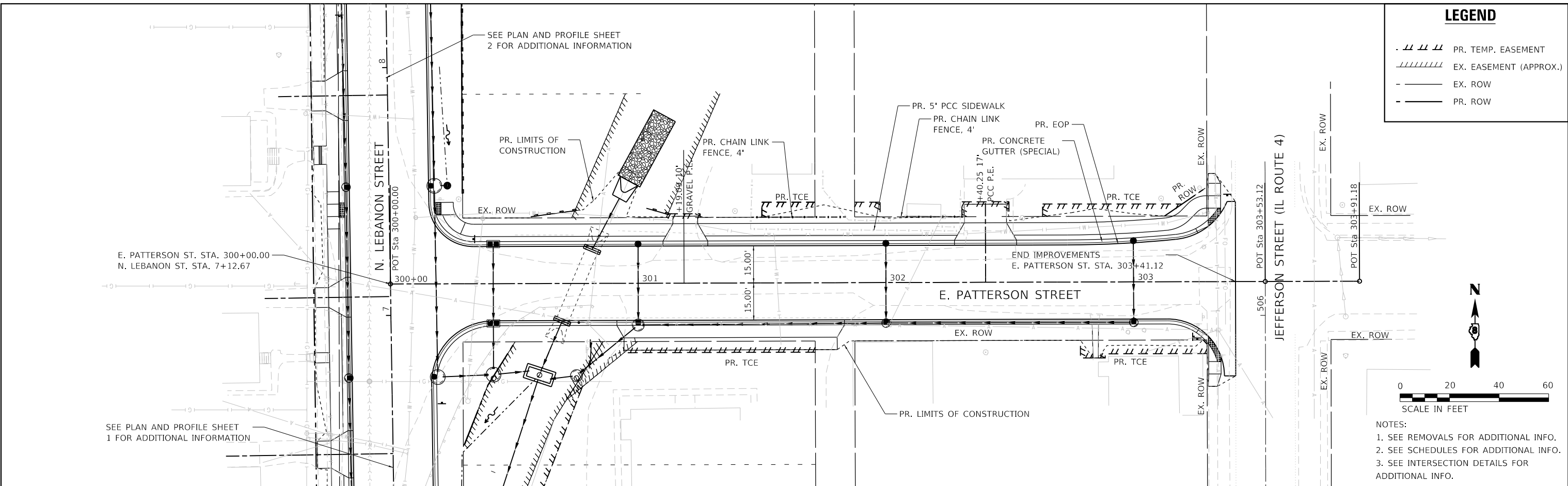
F.A.U. RTE.	SECTION	COUNTY	TOTAL SHEETS	SHEET NO.
		ST. CLAIR	99	19
CONTRACT NO.				
ILLINOIS FED. AID PROJECT				

MODEL: Default
FILE NAME: P:\2020\200322\4_CADD - DWG\4.7 Tran\Sheets\200322-shs\planprofile.dgn

PLAN	SURVEYED	DATE
	PLOTTED	BY
	ALIGNMENT CHECKED	
	NOTE BOOK NO.	
	STRUCTURE NOTATIONS CHECKED	
	CADD FILE NAME	

PROFILE	SURVEYED	DATE
	PLOTTED	BY
	GRADES CHECKED	
	NOTE BOOK NO.	
	STRUCTURE NOTATIONS CHECKED	
	CADD FILE NAME	

MODEL: Default
FILE NAME: P:\2020\20032214_CADD - DWG\4.7 Tran\Sheets\300322-shp-clampor7.dgn



300+00	300+50	301+00	301+50	302+00	302+50	303+00	303+50
428.03	427.25 427.51	427.55 427.59	427.88 427.94	428.41 428.72	429.15 429.78	430.03 430.63	431.32

DESIGNED - EKF	REVISD -
DRAWN - EKF	REVISD -
CHECKED - JWS	REVISD -
DATE - 1-1-2022	REVISD -

USER NAME = tgrigsby	DESIGNED - EKF	REVISD -
PLOT SCALE = 40.0000' / in.	DRAWN - EKF	REVISD -
PLOT DATE = 1/5/2022	CHECKED - JWS	REVISD -
	DATE - 1-1-2022	REVISD -

TWM ENGINEERING GEOSPATIAL SERVICES	TWM, INC. WWW.TWM-INC.COM IL DESIGN FIRM LICENSE NO: 184-001220
--	--

	CITY OF MASCOUTAH N LEBANON RECONSTRUCTION
--	---

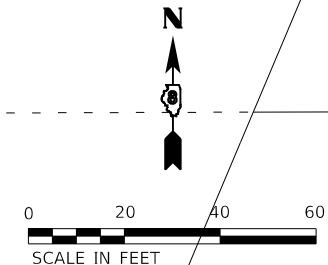
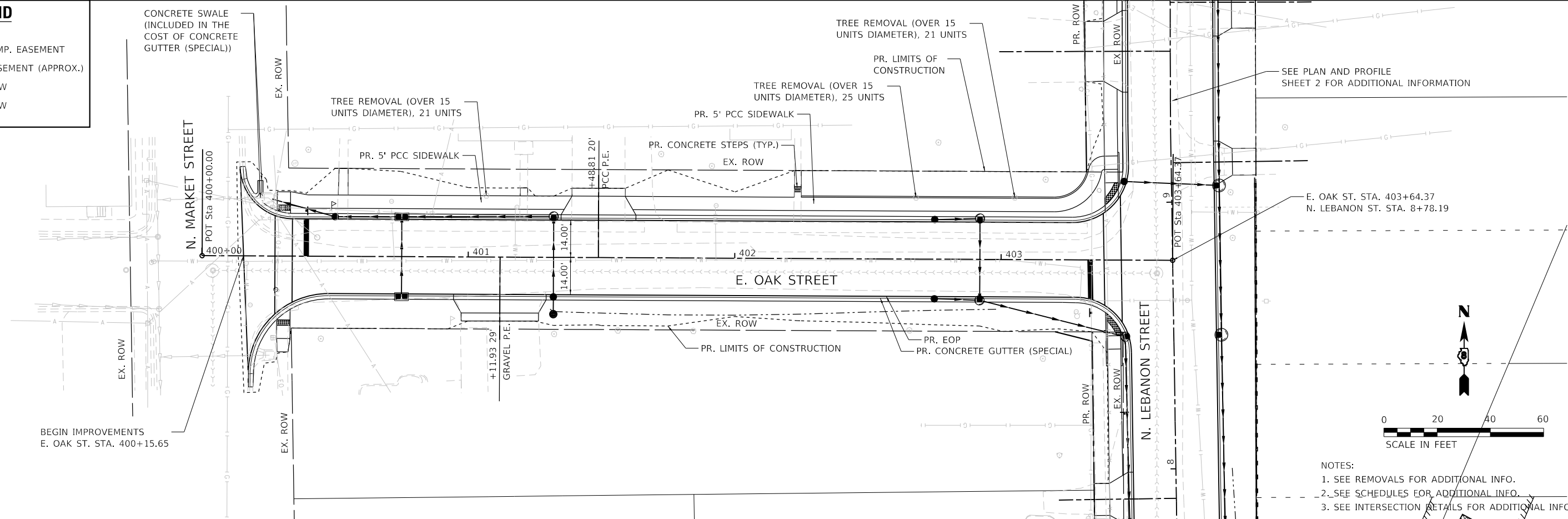
PLAN AND PROFILE EAST PATTERSON STREET

SCALE: 1"=20'	SHEET 7 OF 8 SHEETS	STA. 300+00.00 TO STA. 303+95.15
---------------	---------------------	----------------------------------

F.A.U. RTE.	SECTION	COUNTY	TOTAL SHEETS	SHEET NO.
		ST. CLAIR	99	20
CONTRACT NO.				
ILLINOIS FED. AID PROJECT				

LEGEND

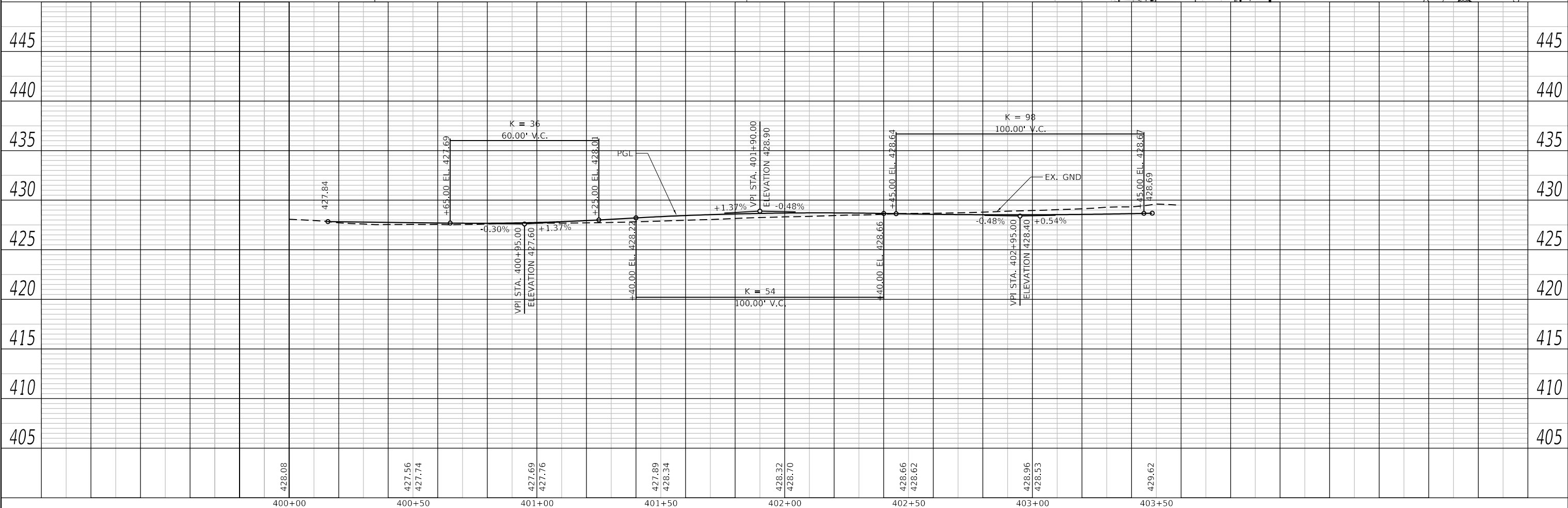
- - - - - PR. TEMP. EASEMENT
- ////// EX. EASEMENT (APPROX.)
- - - - - EX. ROW
- - - - - PR. ROW



- NOTES:
1. SEE REMOVALS FOR ADDITIONAL INFO.
 2. SEE SCHEDULES FOR ADDITIONAL INFO.
 3. SEE INTERSECTION DETAILS FOR ADDITIONAL INFO.

PLAN	SURVEYED	DATE
	PLOTTED	
	ALIGNMENT CHECKED	
	GRADES CHECKED	
	STRUCTURE NOTATIONS CHECKED	
NOTE BOOK NO.	CADD FILE NAME	

PROFILE	SURVEYED	DATE
	PLOTTED	
	GRADES CHECKED	
	STRUCTURE NOTATIONS CHECKED	
NOTE BOOK NO.		



MODEL: Default
FILE NAME: P:\2022\03\22\4_CADD - DWG\4-7 Tran\Sheets\300322-sh-csl\planpr08.dwg

428.08	427.56	427.74	427.69	427.76	428.00	428.22	428.66	428.62	428.96	428.53	429.62
400+00	400+50	401+00	401+50	402+00	402+50	403+00	403+50				

TWM
ENGINEERING
GEOSPATIAL SERVICES

TWM, INC.
www.twm-inc.com
IL DESIGN FIRM
LICENSE NO: 184-001220

USER NAME = tgrigsby	DESIGNED - EKF	REVISED -
	DRAWN - EKF	REVISED -
PLOT SCALE = 40.0000' / 1"	CHECKED - JWS	REVISED -
PLOT DATE = 1/5/2022	DATE - 1-1-2022	REVISED -



**CITY OF MASCOUTAH
N LEBANON RECONSTRUCTION**

**PLAN AND PROFILE
EAST OAK STREET**

SCALE: 1"=20' SHEET 8 OF 8 SHEETS STA. 400+00.00 TO STA. 403+69.69

F.A.U. RTE.	SECTION	COUNTY	TOTAL SHEETS	SHEET NO.
		ST. CLAIR	99	21
CONTRACT NO.				
ILLINOIS FED. AID PROJECT				