

LAKESIDE ESTATES PUMP STATION AND FORCE MAIN

BEING A SUBDIVISION OF PART OF THE NORTHEAST 1/4 OF SECTION 36,
TOWNSHIP 1 NORTH, RANGE 7 WEST OF THE THIRD PRINCIPAL MERIDIAN,
CITY OF MASCOUTAH, ST. CLAIR COUNTY, ILLINOIS

LEGEND

●	IRON PIN FOUND	⊙	PROPOSED MANHOLE
○	IRON PIN SET	→→→	PROPOSED SANITARY SEWER
⊙ _{15"}	EXISTING DECIDUOUS TREE	—FM—	PROPOSED SANITARY SEWER FORCE MAIN
☆	EXISTING LIGHT POLE	→	PROPOSED STORM SEWER
⊕	EXISTING POWER POLE	(TBR)	TO BE REMOVED
⋈	EXISTING GUY WIRE		
⊕	EXISTING FIRE HYDRANT		
⊕	EXISTING WATER VALVE		
⊕ _{MM}	EXISTING WATER METER		
⊕	EXISTING CLEANOUT		
⊙	EXISTING MANHOLE		
⊕	EXISTING MAILBOX		
G	EXISTING GAS LINE		
FO	EXISTING FIBER OPTICS LINE		
W	EXISTING WATER LINE		
OE	EXISTING OVERHEAD ELECTRIC LINE		
SS	EXISTING SANITARY SEWER		
→	EXISTING STORM SEWER		
EX	INDICATES EXISTING		
---476---	EXISTING CONTOUR		
x 476.50	EXISTING SPOT ELEVATION		



LOCATION MAP
NOT TO SCALE

INDEX OF SHEETS

CIVIL SHEETS

- 1 - COVER SHEET
- 2 - EXISTING CONDITIONS & DEMOLITION PLAN
- 3 - FORCE MAIN PLAN & PROFILE
- 4 - SANITARY AND STORM SEWER PROFILES
- 5 - PUMP STATION SITE PLAN
- 6 - PUMP STATION DETAILS
- 7 - CONTROL PANEL DETAILS
- 8 - CONTROL PANEL INSTALLATION DETAILS
- 9 - MISCELLANEOUS DETAILS
- 10 - PUMP ELECTRICAL SITE PLAN

LIST OF UTILITIES

<p>SEWER CITY OF MASCOUTAH 3 WEST MAIN STREET MASCOUTAH, ILLINOIS 62258 618-566-2964</p>	<p>WATER CITY OF MASCOUTAH 3 WEST MAIN STREET MASCOUTAH, ILLINOIS 62258 618-566-2964</p>
<p>ELECTRIC CITY OF MASCOUTAH 3 WEST MAIN STREET MASCOUTAH, ILLINOIS 62258 618-566-2964</p>	<p>TELEPHONE FRONTIER COMMUNICATIONS 111 EAST STATE STREET MASCOUTAH, ILLINOIS 62258 815-895-1515</p>
<p>GAS AMEREN IP 1050 WEST BLVD. BELLEVILLE, ILLINOIS 62221 618-236-6281</p>	<p>CABLE TV CHARTER COMMUNICATIONS 1638 CARLYLE AVENUE BELLEVILLE, ILLINOIS 62221 618-779-9567</p>

OWNER

CITY OF MASCOUTAH
3 WEST MAIN ST
MASCOUTAH, IL
62258

ENGINEER/SURVEYOR

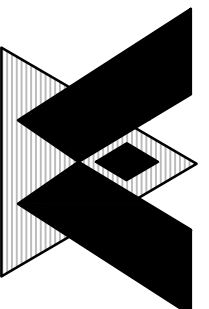
MILLENNIA PROFESSIONAL SERVICES
11 EXECUTIVE DRIVE, SUITE 12
FAIRVIEW HEIGHTS, ILLINOIS
62208

Seal:



DATE: ___/___/___
ERIC R OLSON, P.E.
EXPIRES 11/30/21

Drawing Issue	07/14/20	IEPA Submittal
	08/13/20	City Submittal
Professional Design Firm No.: 184-0040.70.0010		



St. Louis Office: 6439 Plymouth Ave, Suite W-129, St. Louis, MO 63133, 314.531.9881
Metro-East Office: 11 Executive Dr, Suite 12, Fairview Heights, IL 62208, 618.624.8610
Peoria Office: 850 North Main St, Morton, IL 61550, 309.321.8141
Chicago Office: 2600 Warrenville Rd, Ste 203, Downers Grove, IL 60515, 630.839.2566

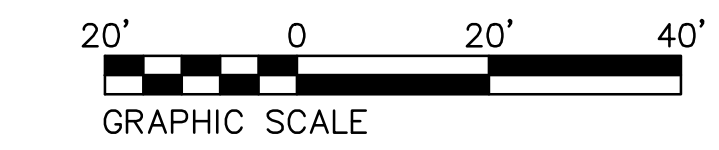
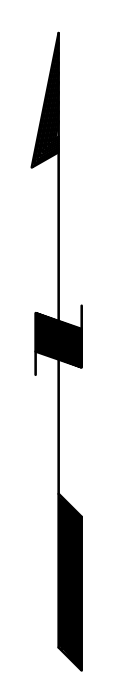
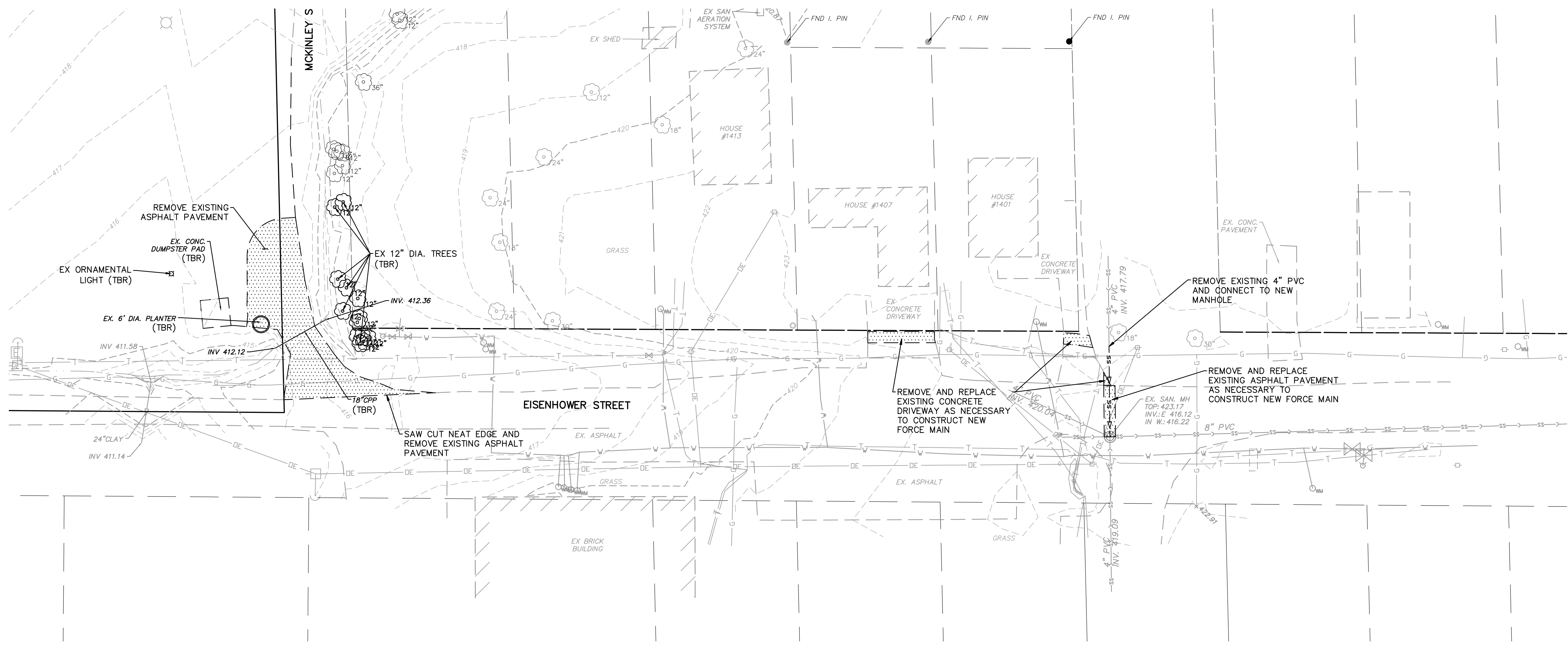
**LAKESIDE ESTATES
PUMP STATION
Macoutah, Illinois**

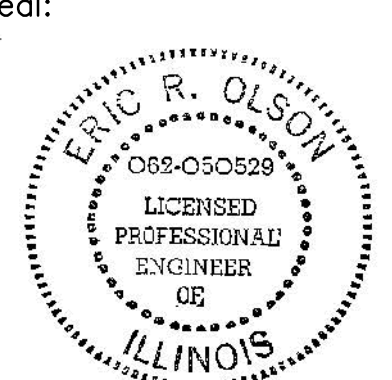
City of Mascoutah
3 West Main Street
Mascoutah, IL 62258

Sheet Title:

COVER SHEET

Sheet
1 of 10



Seal:

 DATE: ____/____/____
 ERIC R OLSON, P.E.
 EXPIRES 11/30/21

Drawing Issue	
07/14/20	IEPA Submittal
08/13/20	City Submittal
Professional Design Firm No.: 184-004070-0010	

MILLENNIA PROFESSIONAL SERVICES
 www.millennia.pro

Chicago Office: 2600 Warrenville Rd. Ste 203 Downers Grove, IL 60515 630.839.2566

Peoria Office: 850 North Main St. Morton, IL 60515 309.321.8141

Metro-East Office: 11 Executive Dr. Suite 12 Fairview Heights, IL 62208 618.624.8610

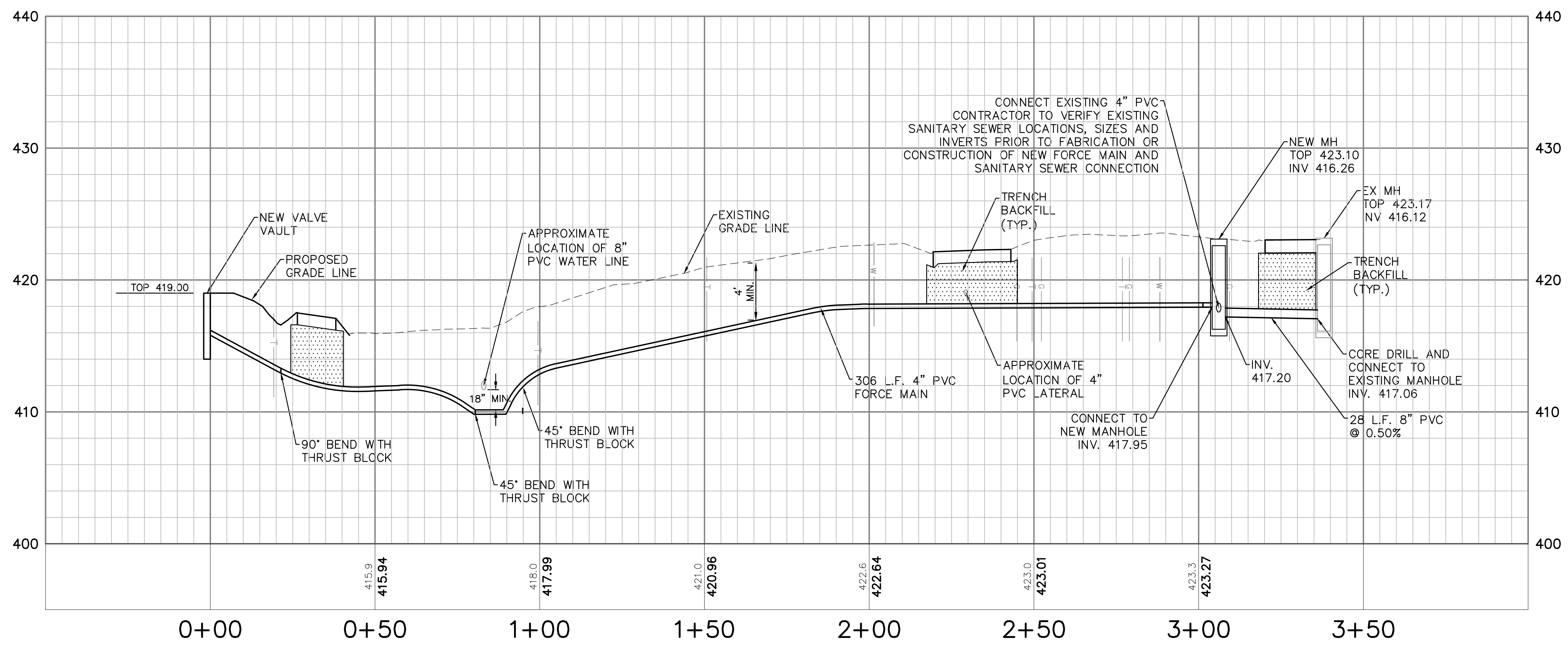
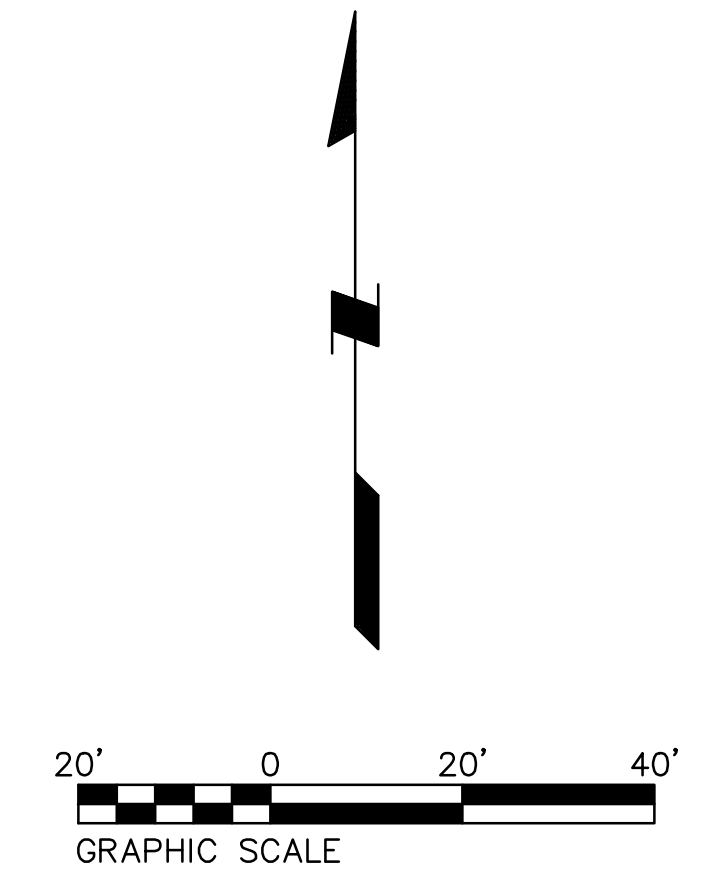
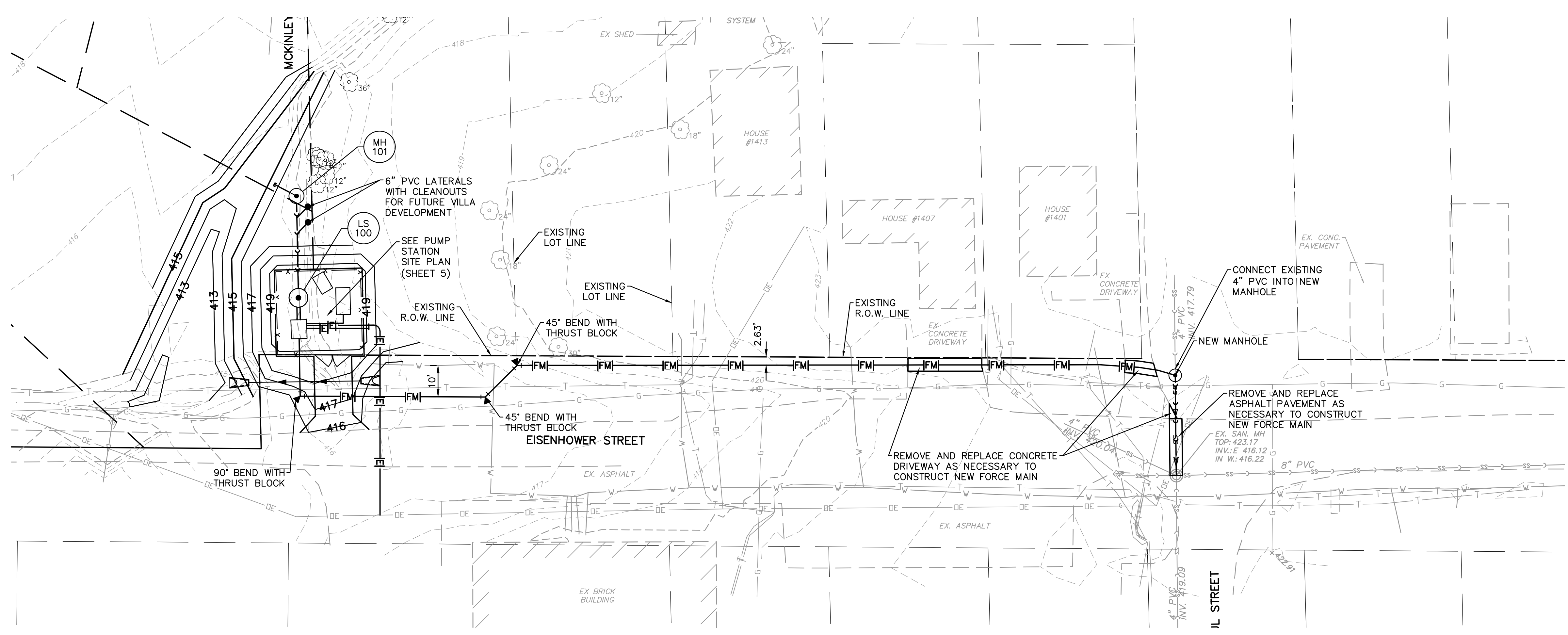
St. Louis Office: 6439 Plymouth Ave. Suite W-29 St. Louis, MO 63133 314.531.9981

LAKESIDE ESTATES PUMP STATION Mascoutah, Illinois

City of Mascoutah
 3 West Main Street
 Mascoutah, IL 62258

Sheet Title:
EXISTING CONDITIONS & DEMOLITION PLAN

Sheet
2 of 10



NOTE:
 1. ALL HORIZONTAL AND VERTICAL LOCATIONS OF EXISTING UTILITIES TO BE CONSIDERED AS APPROXIMATE ONLY. CONTRACTOR TO VERIFY EXISTING LOCATIONS PRIOR TO FABRICATION AND CONSTRUCTION.
 2. PIPE LENGTHS ARE FROM CENTER OF STRUCTURE TO CENTER OF STRUCTURE.

SCALE
 HORIZ. 1"=20'
 VERT. 1"=5'

Seal:

 DATE: _____
 ERIC R OLSON, P.E.
 EXPIRES 11/30/21

Drawing Issue	07/14/20	IEPA Submittal
	08/13/20	City Submittal

Professional Design Firm No.: 184.0040.70.0010

MILLENNIA
 PROFESSIONAL SERVICES
 www.millennia.pro

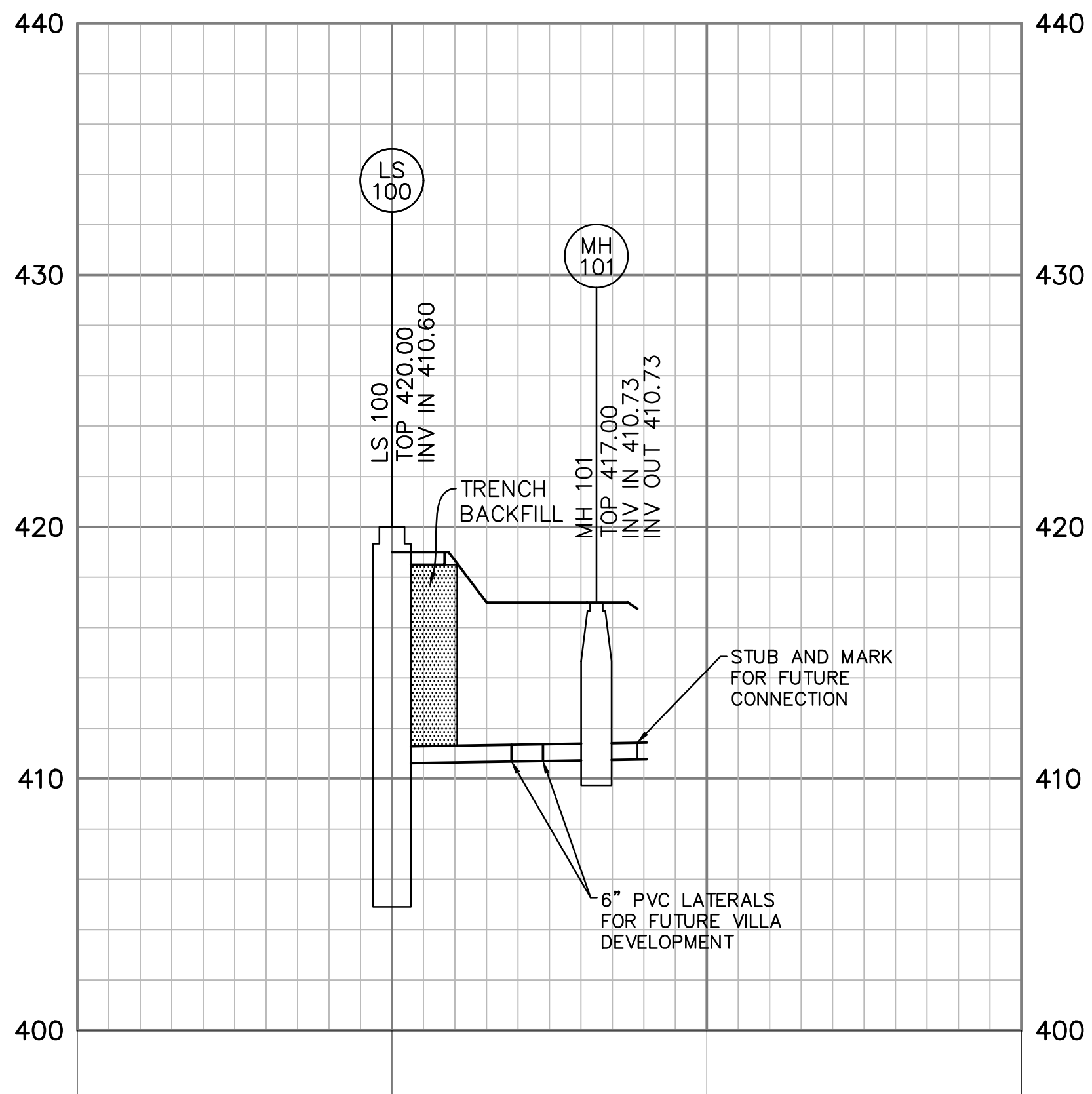
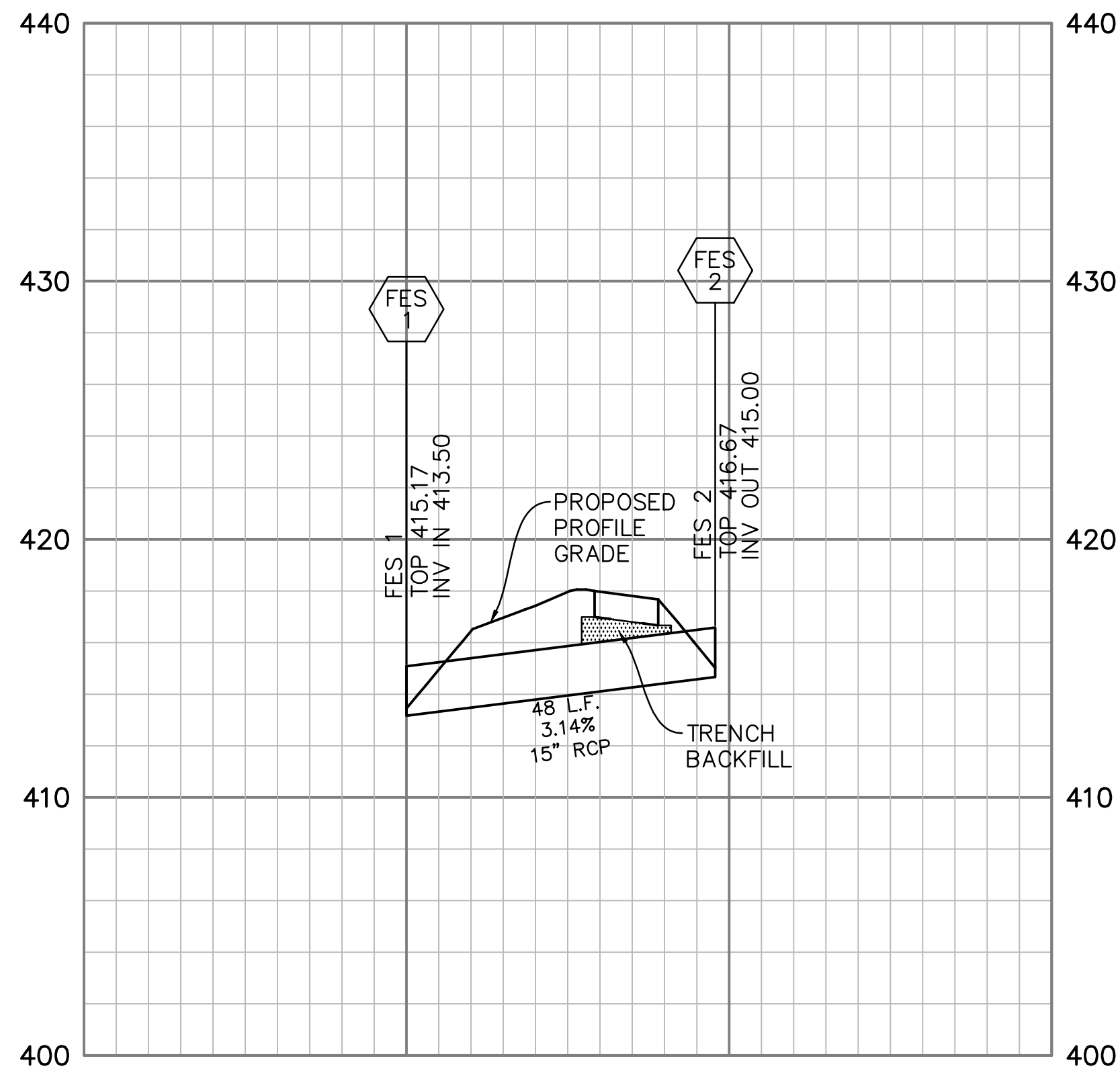
Chicago Office: 2600 Warrenville Rd. Ste 203, Downers Grove, IL 60515, 630.839.2566
 Peoria Office: 850 North Main St, Morton, IL 61550, 309.321.8141
 Metro-East Office: 11 Executive Dr, Suite 12, Fairview Heights, IL 62208, 618.624.8610
 St. Louis Office: 6439 Plymouth Ave, Suite W-29, St. Louis, MO 63133, 314.531.9891

LAKESIDE ESTATES
PUMP STATION
Macoutah, Illinois

City of Mascoutah
 3 West Main Street
 Mascoutah, IL 62258

Sheet Title:
FORCE MAIN PLAN & PROFILE

Sheet
3 of 10



- NOTE:
1. ALL HORIZONTAL AND VERTICAL LOCATIONS OF EXISTING UTILITIES TO BE CONSIDERED AS APPROXIMATE ONLY. CONTRACTOR TO VERIFY EXISTING LOCATIONS PRIOR TO FABRICATION AND CONSTRUCTION.
 2. PIPE LENGTHS ARE FROM CENTER OF STRUCTURE TO CENTER OF STRUCTURE.
 3. PIPES LENGTHS WITH FLARED END SECTIONS ARE TO THE INVERT OF THE FLARED END SECTION.
 4. CURB INLET TOPS ARE TO THE BACK OF CURB.

SCALE
HORIZ. 1"=20'
VERT. 1"=5'

Seal:

 DATE: ___/___/___
 ERIC R OLSON, P.E.
 EXPIRES 11/30/21

Drawing Issue	07/14/20	IEPA Submittal
	08/13/20	City Submittal
Professional Design Firm No.: 184-004070.0010		

MILLENNIA
 PROFESSIONAL SERVICES
 www.millennia.pro

Chicago Office:
 2600 Warrenville Rd. Ste 203
 Downers Grove, IL 60515
 630.839.2566

Peoria Office:
 850 North Main St
 Morton, IL 61550
 309.321.8141

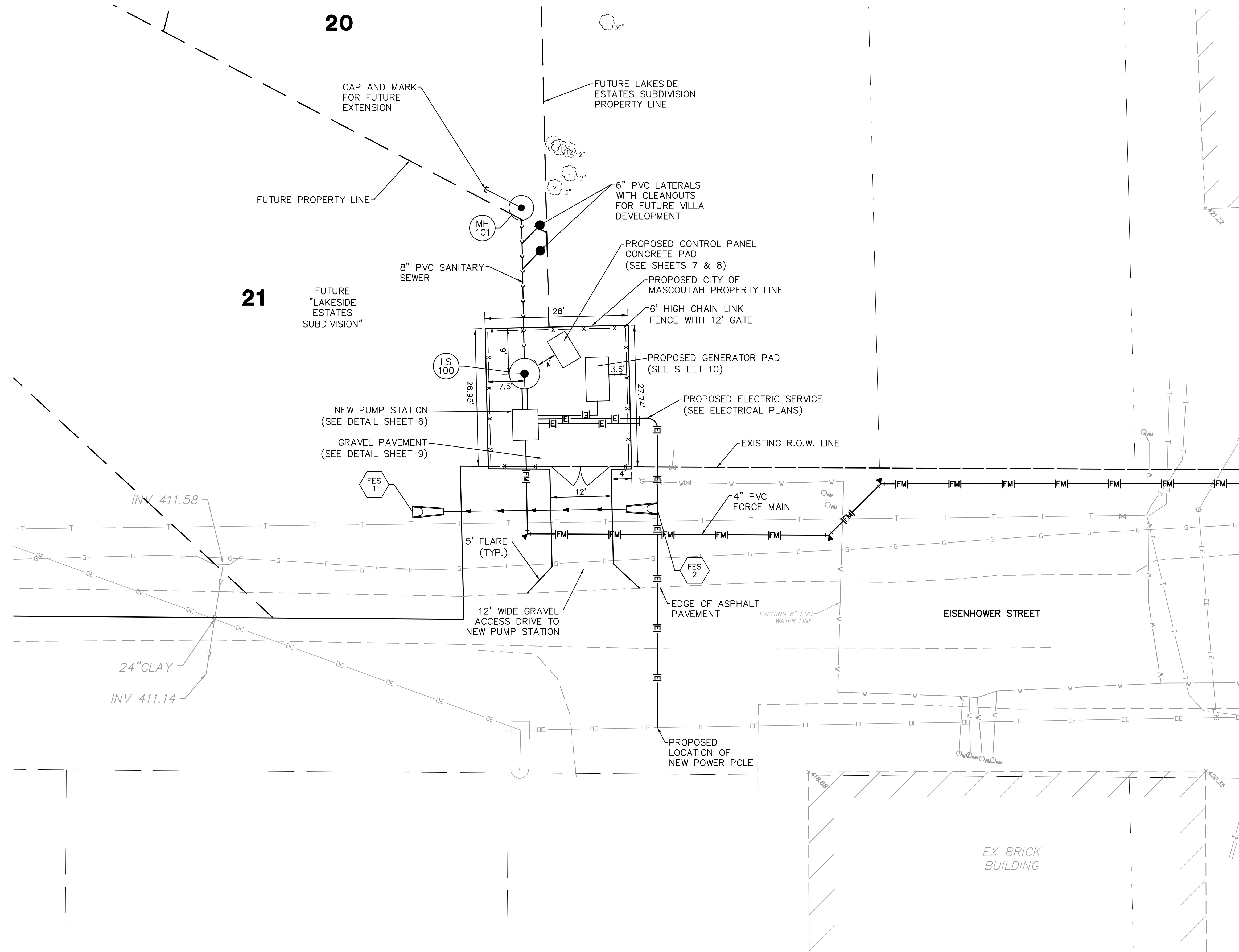
Metro-East Office:
 11 Executive Dr. Suite 12
 Fairview Heights, IL 62208
 618.624.8610

St. Louis Office:
 6439 Plymouth Ave
 Suite W-29
 St. Louis, MO 63133
 314.531.3981

LAKESIDE ESTATES
PUMP STATION
Macoutah, Illinois

City of Mascoutah
 3 West Main Street
 Mascoutah, IL 62258

Sheet Title:
SANITARY AND
STORM SEWER
PROFILES



20

21

Seal:

DATE: ____/____/____
 ERIC R. OLSON, P.E.
 EXPIRES 11/30/21

Drawing Issue	
07/14/20	IEPA Submittal
08/13/20	City Submittal
Professional Design Firm No.: 184-004070-0010	

MILLENNIA
 PROFESSIONAL SERVICES
 www.millennia.pro

St. Louis Office
 6439 Plymouth Ave
 Suite W-29
 St. Louis, MO 63133
 314.531.9981

Metro-East Office
 11 Executive Dr. Suite 12
 Fairview Heights, IL 62208
 618.624.8610

Peoria Office
 850 North Main St
 Morton, IL 61550
 309.321.8141

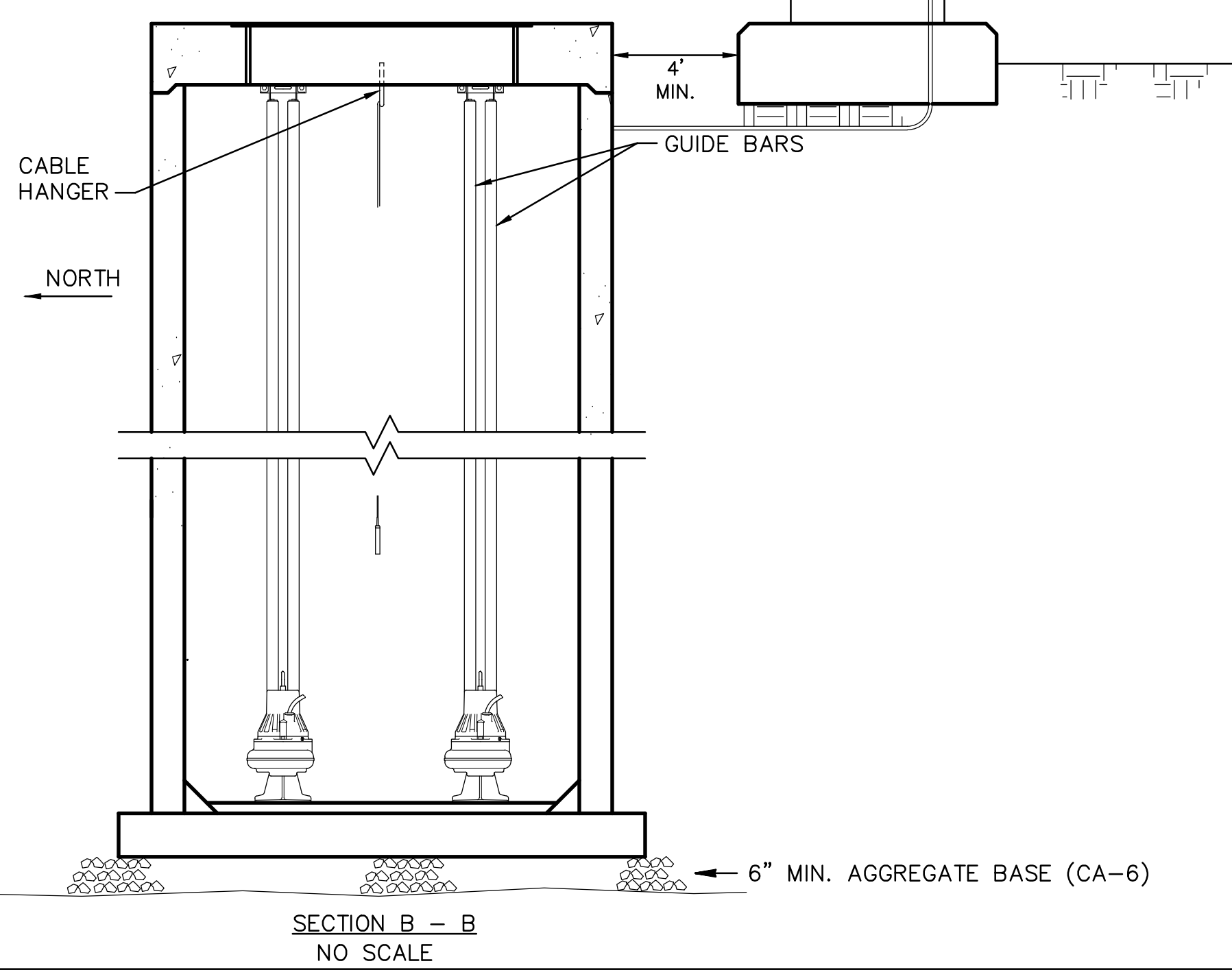
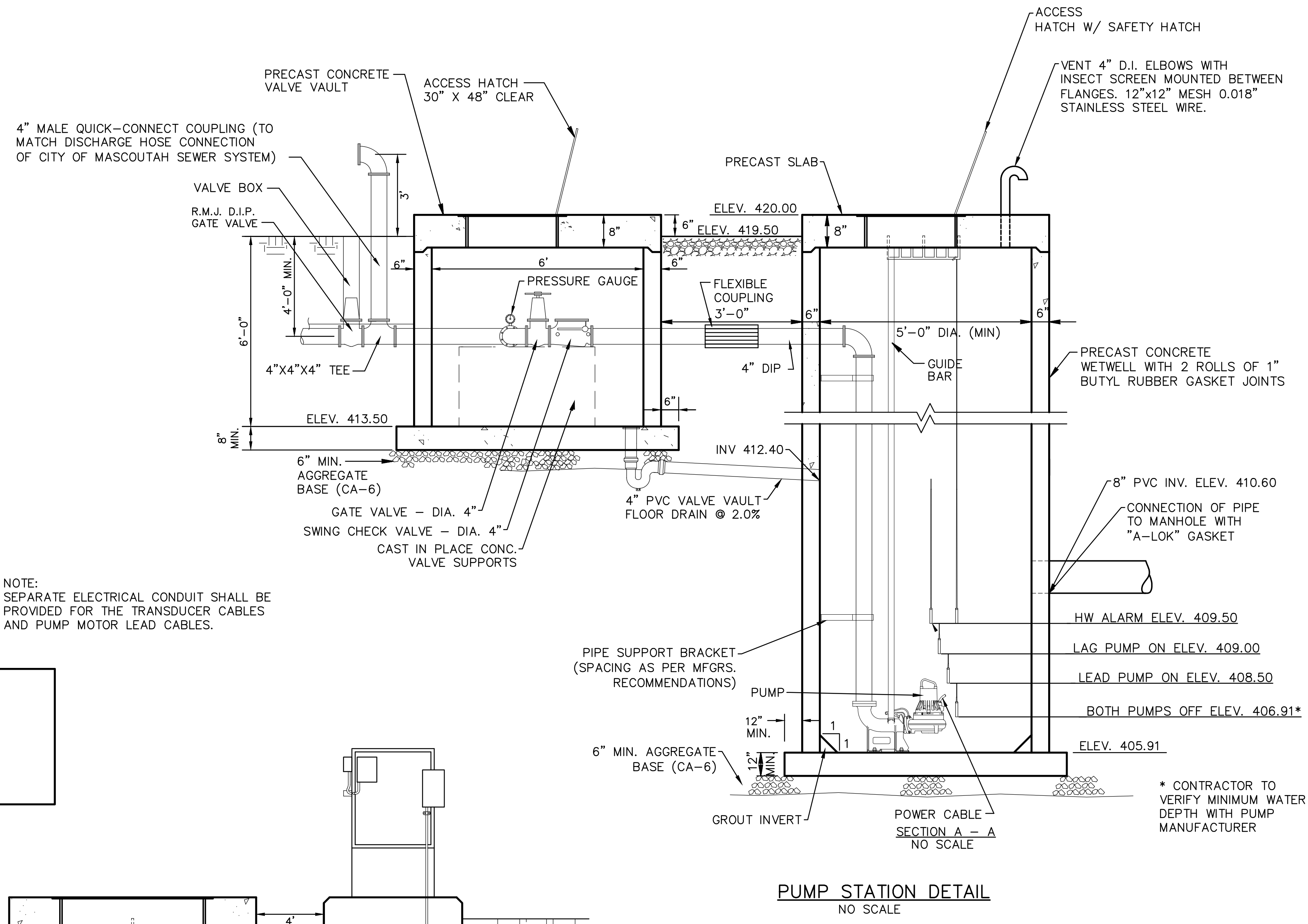
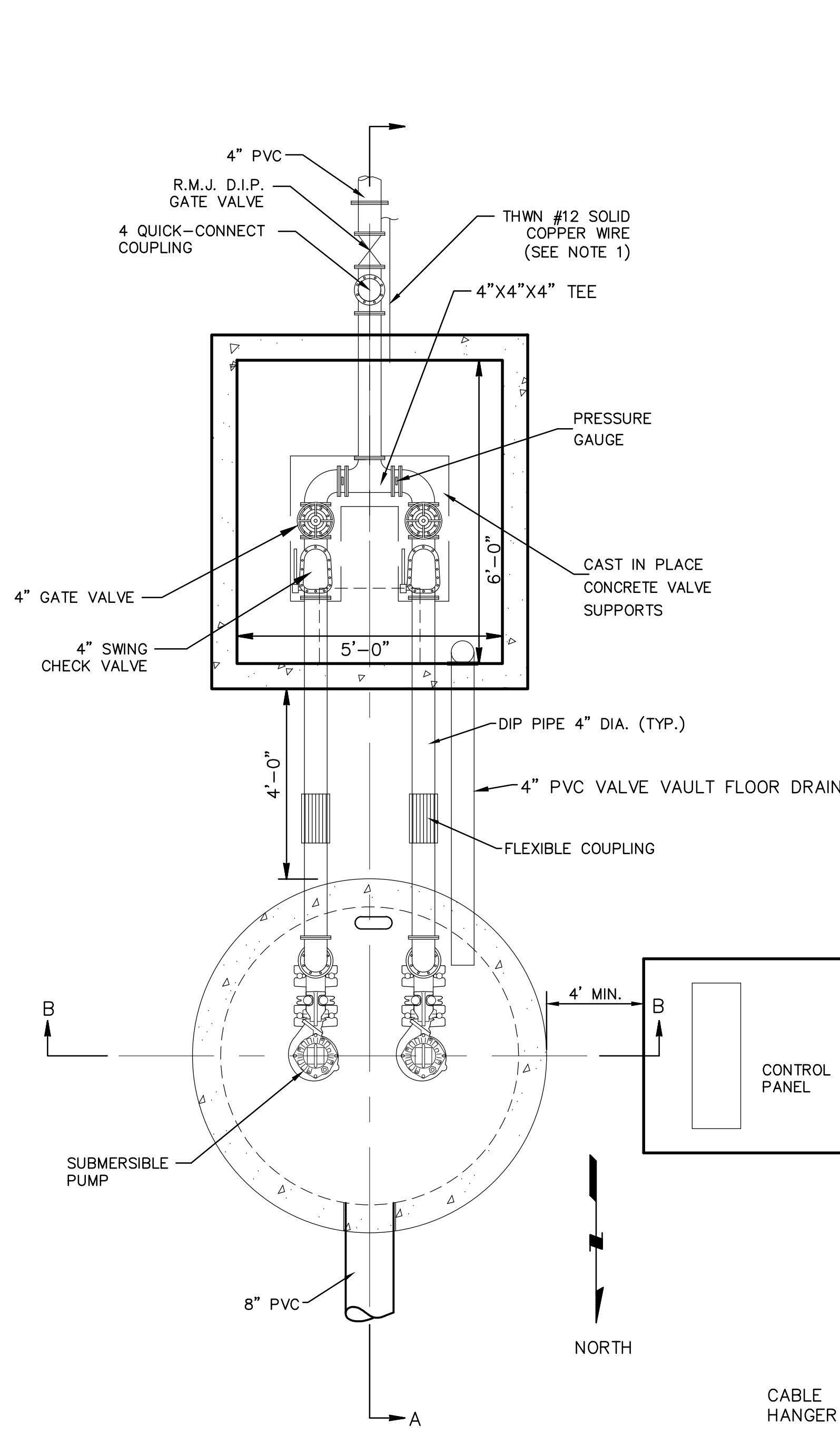
Chicago Office
 2600 Warrenville Rd. Ste 203
 Downers Grove, IL 60515
 630.839.2666

**LAKESIDE ESTATES
 PUMP STATION
 Mascoutah, Illinois**

City of Mascoutah
 3 West Main Street
 Mascoutah, IL 62258

Sheet Title:
**PUMP
 STATION
 SITE PLAN**

Sheet
5 of 10



- NOTES:**
- 1) TO PROVIDE FOR SENSOR DETECTION, THWN #12 SOLID COPPER WIRE SHALL BE INSTALLED ON OR ALONGSIDE THE PROPOSED PVC FORCE MAIN WITH POSITIVE CONNECTIONS TO LOCATOR POST PROVIDED BY CITY OF MASCOUHAH'S SEWER SYSTEM, AT BOTH ENDS OF THE FORCE MAIN.
 - 2) PUMP STATION STRUCTURE SHALL CONFORM TO ASTM C-478. LID TO BE REINFORCED FOR A H2O LOADING.
 - 3) DUCTILE IRON PIPE SHALL BE IN CONFORMANCE WITH AWWA C151/A21.51 WITH CEMENT LINING IN CONFORMANCE WITH AWWA C104/A21.4. FITTINGS SHALL BE IN CONFORMANCE WITH AWWA C110/A21.10, AND JOINTS SHALL BE IN CONFORMANCE WITH AWWA C111. FITTINGS AND JOINTS TO HAVE CEMENT LINING AS SPECIFIED ABOVE. ALL DUCTILE IRON PIPE SHALL BE COATED WITH AN ASPHALTIC COATING APPROXIMATELY 1 MIL THICK PER AWWA C151 FOR DUCTILE IRON PIPE, AWWA C115 FOR FLANGED PIPE, AND AWWA C110 FOR FITTINGS. DUCTILE IRON PIPE JOINTS SHALL BE UTILIZED IN THE WET WELL, BETWEEN THE WET WELL AND VALVE VAULT AND INSIDE THE VALVE VAULT.
 - 4) FORCE MAIN PIPING EXTERIOR TO THE VALVE VAULT ON THE EFFLUENT SIDE SHALL BE POLY-VINYL CHLORIDE PIPE MADE FROM CLASS 12454-B VIRGIN COMPOUNDS AS DEFINED IN ASTM D1784. THE FORCE MAIN PIPING SHALL BE IN CONFORMANCE WITH ASTM D2241, FOUR (4) INCHES, AND HAVE A DIMENSION RATIO OF 26 (CLASS 160). JOINTS FOR THIS PIPE SHALL BE IN CONFORMANCE WITH ASTM D3139 AND SHALL BE FLEXIBLE ELASTOMERIC GASKETS.
 - 5) ALL PUMP GUIDE RAILS SHALL BE MADE OF 316 OR 304 SCHEDULE STAINLESS STEEL PIPE. GUIDE RAILS SHALL BE BRACED TO WALLS WITH STAINLESS STEEL BRACKETS (PLACED AS DIRECTED BY PUMP MANUFACTURER)
 - 6) CONTRACTOR TO SUBMIT SHOP DRAWINGS TO THE ENGINEER FOR THE LIFT STATION AND VALVE VAULT FOR APPROVAL. CONTRACTOR TO VERIFY WITH THE PUMP MANUFACTURER, ALL DIMENSIONS AND INSTALLATION CLEARANCES FOR THE LIFT STATION AND VALVE VAULT EQUIPMENT.
 - 7) CONTRACTOR TO COMPLETE A PRESSURE TEST OF THE FORCE MAIN ONCE COMPLETE. TESTING TO BE IN ACCORDANCE WITH THE STANDARD SPECIFICATIONS OF WATER AND SEWER MAIN CONSTRUCTION IN ILLINOIS. FORCE MAIN TO BE PRESSURE TESTED TO 50 PSI, AND THIS PRESSURE IS TO BE HELD A MINIMUM OF 1.5 HOURS. PROVISIONS OF AWWA C-600 AND C-603, WHERE APPLICABLE, SHALL APPLY.
 - 8) ALL HARDWARE IN WET WELL TO BE STAINLESS STEEL.
 - 9) SEE SPECIFICATIONS TITLED "LAKESIDE ESTATES SANITARY SEWER PUMP STATION SPECIFICATIONS" FOR ADDITIONAL REQUIREMENTS.

PUMP STATION DETAILS

NOT TO SCALE

Seal:

 DATE: _____
 ERIC R OLSON, P.E.
 EXPIRES 11/30/21

Drawing Issue	07/14/20	IEPA Submittal
	08/13/20	City Submittal

Professional Design Firm No.: 184-004070-010

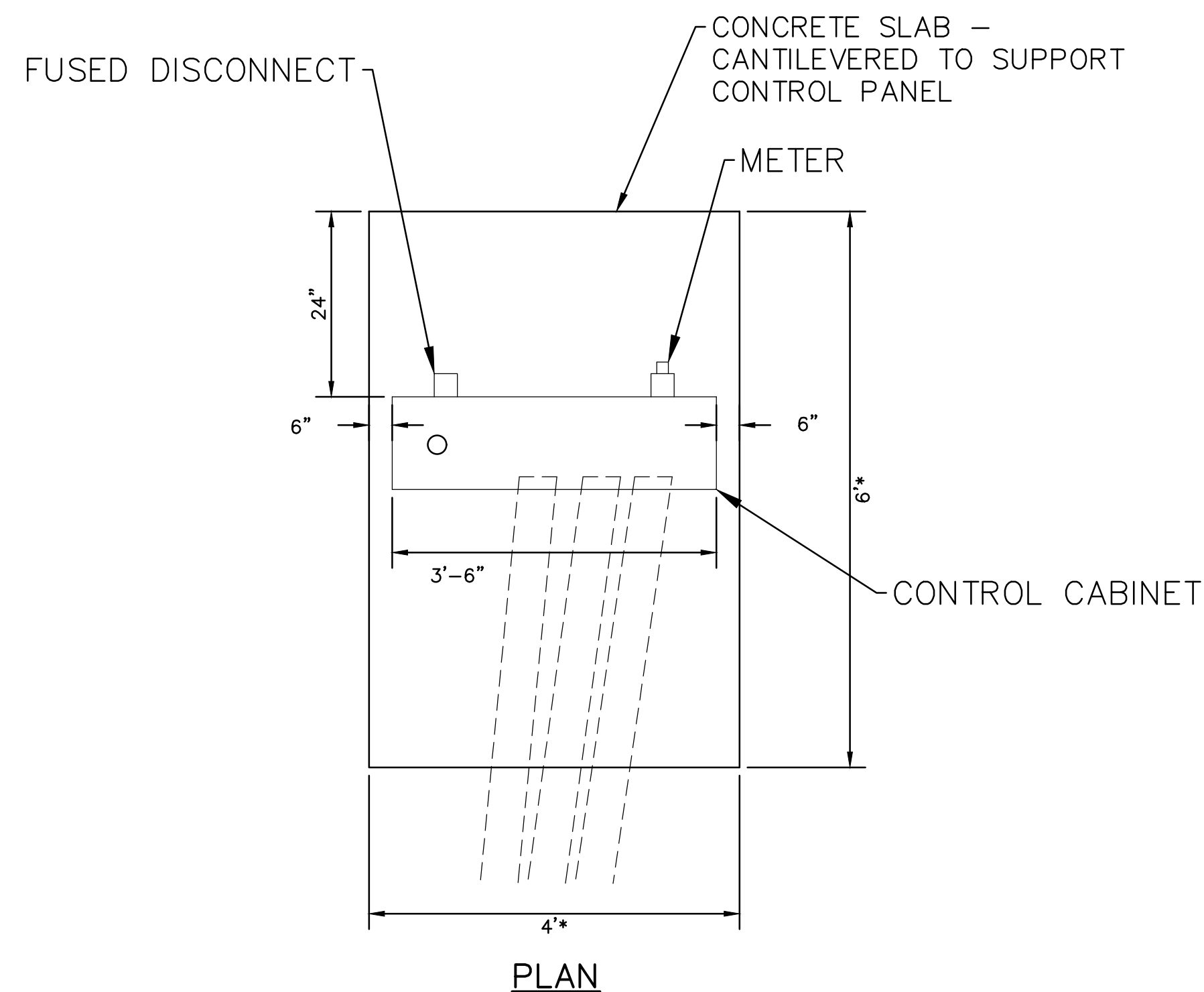
MILLENNIA PROFESSIONAL SERVICES
 www.millennia.pro

St. Louis Office: 6439 Plymouth Ave, Suite W-29, St. Louis, MO 63133, 314.531.9891
 Metro-East Office: 11 Executive Dr., Suite 12, Fairview Heights, IL 62208, 618.624.8610
 Peoria Office: 850 North Main St, Morton, IL 61550, 309.321.8141
 Chicago Office: 2600 Warrenville Rd, Ste 203, Downers Grove, IL 60515, 630.839.2566

LAKESIDE ESTATES PUMP STATION Macoutah, Illinois

City of Mascoutah
 3 West Main Street
 Mascoutah, IL 62258

Sheet Title:
PUMP STATION DETAILS
 Sheet
 6 of 10



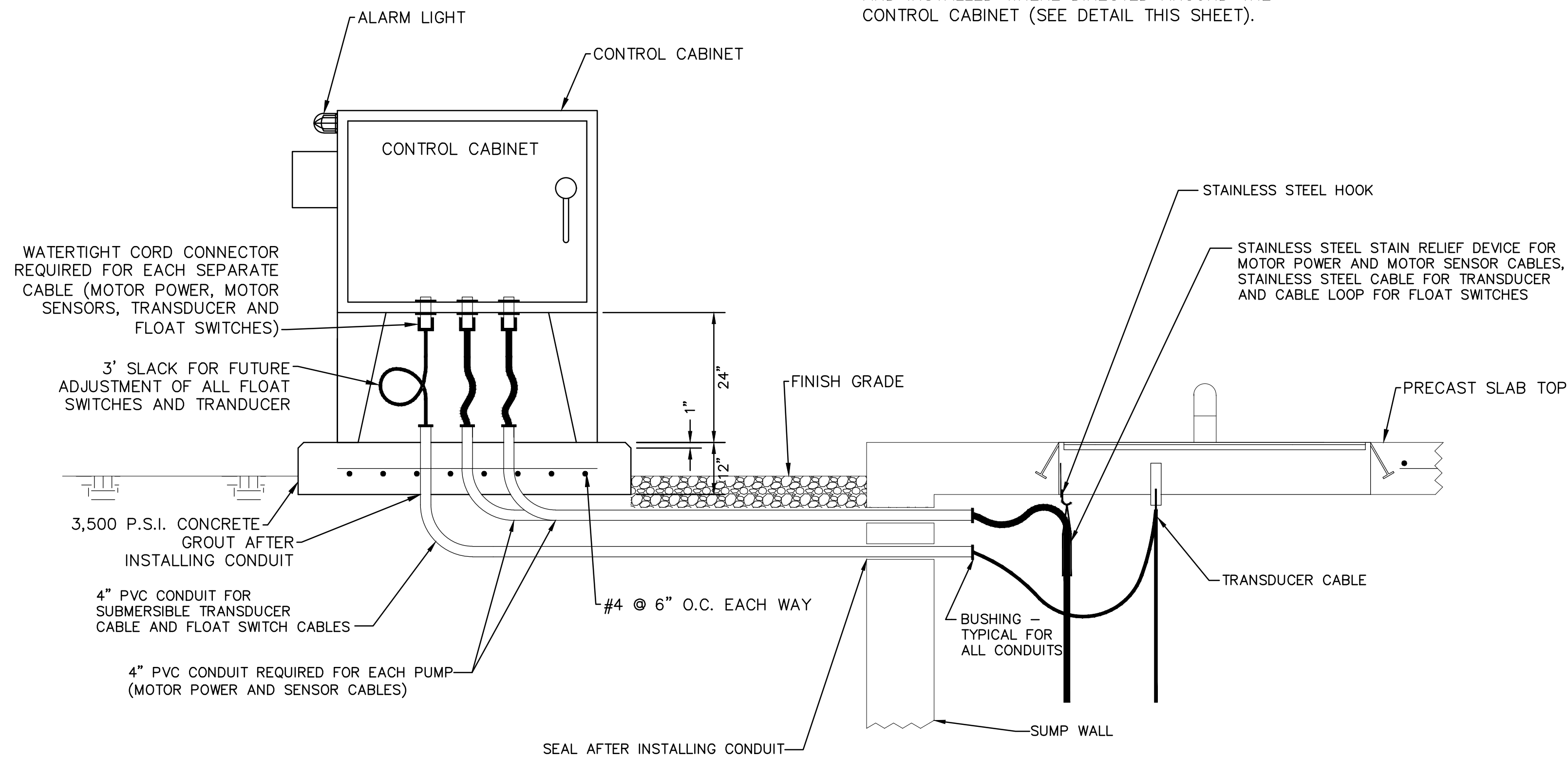
*VERIFY FINAL DIMENSION WITH CONTROL PANEL MANUFACTURE

CONTROL CABINET AND CONCRETE PAD DETAIL

NO SCALE

NOTES:

1. EXPOSED EDGES OF CONCRETE PAD TO HAVE 1" CHAMFER.
2. A MINIMUM OF 4 BOLLARDS SHALL BE PROVIDED AND INSTALLED WHERE DIRECTED AROUND THE CONTROL CABINET (SEE DETAIL THIS SHEET).



CONTROL CABINET, CONCRETE PAD AND CONDUIT & ELECTRICAL CABLE INSTALLATION DETAILS

NO SCALE

CONTROL PANEL DETAILS

NOT TO SCALE

Seal:



DATE: ___/___/___
ERIC R OLSON, P.E.
EXPIRES 11/30/21

Drawing Issue

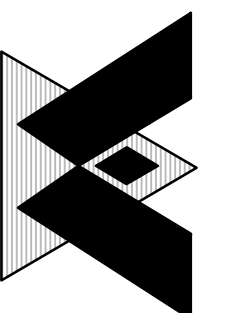
07/14/20	IEPA Submittal
08/13/20	City Submittal

Professional Design Firm No.: 184-004070.0010

MILLENNIA PROFESSIONAL SERVICES

www.millennia.pro

Chicago Office: 2600 Warrenville Rd, Ste 203 Downers Grove, IL 60515 630.839.2566
Peoria Office: 850 North Main St Morton, IL 61550 309.321.8141
Metro-East Office: 11 Executive Dr, Suite 12 Fairview Heights, IL 62208 618.624.8610
St. Louis Office: 6439 Plymouth Ave Suite W-129 St. Louis, MO 63133 314.531.3981



LAKESIDE ESTATES PUMP STATION Macoutah, Illinois

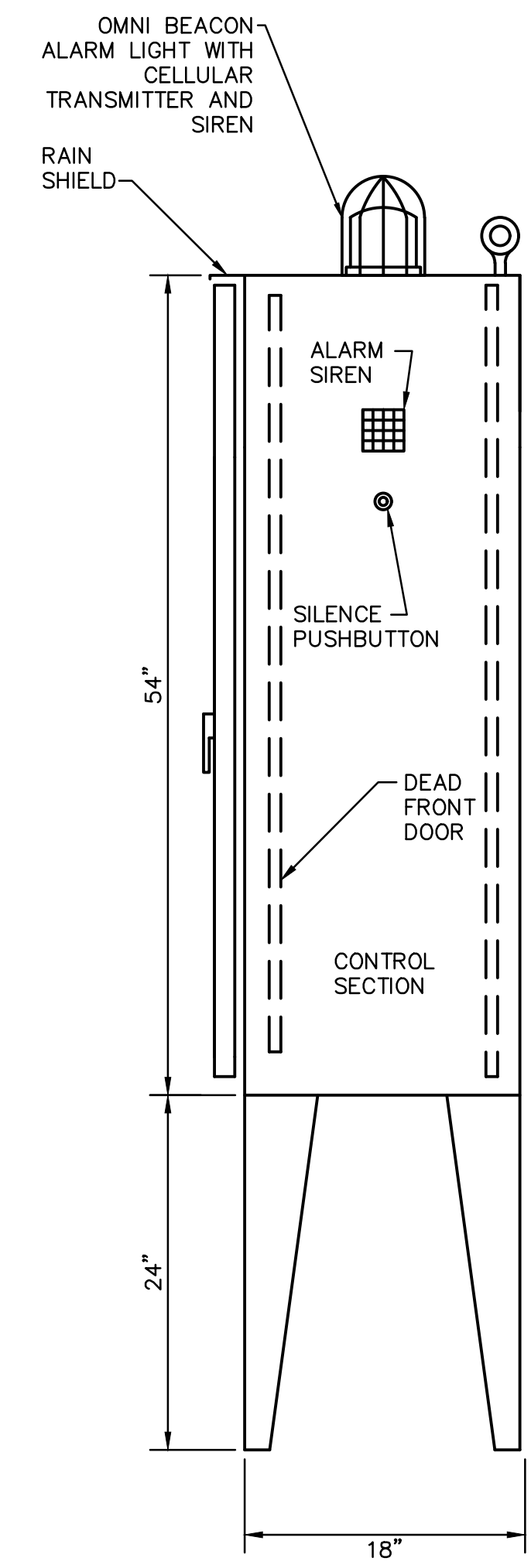
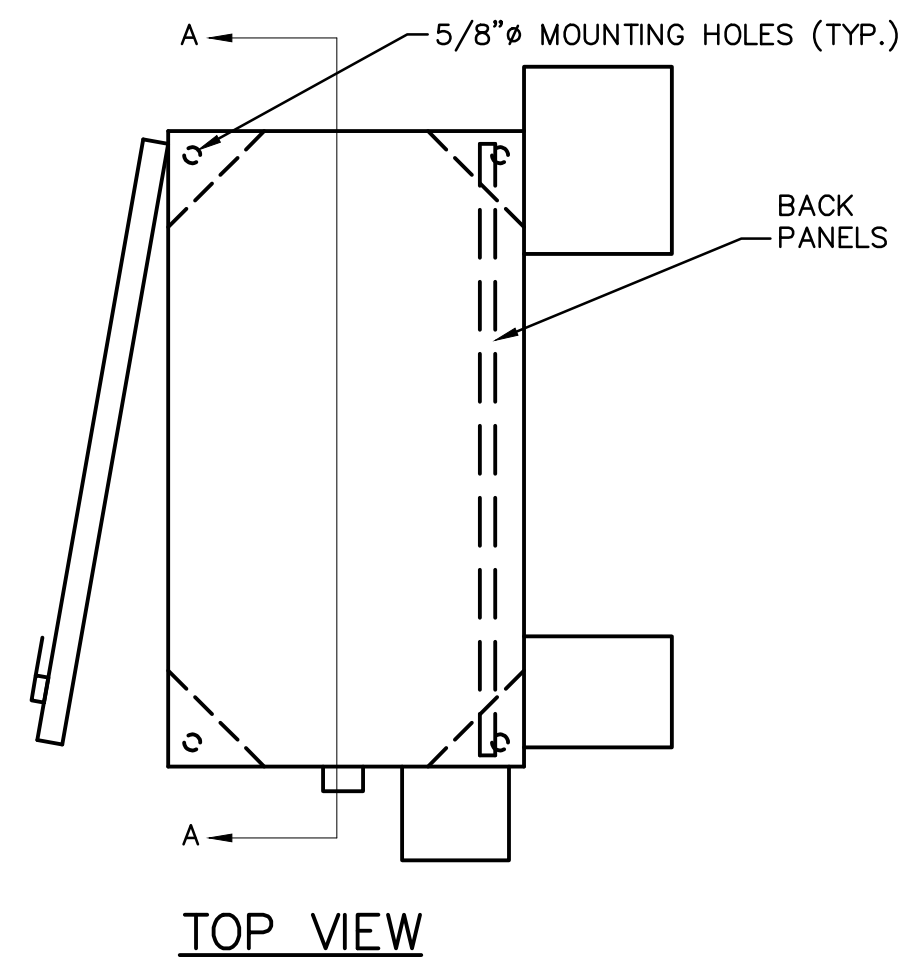
City of Mascoutah
3 West Main Street
Mascoutah, IL 62258

Sheet Title:

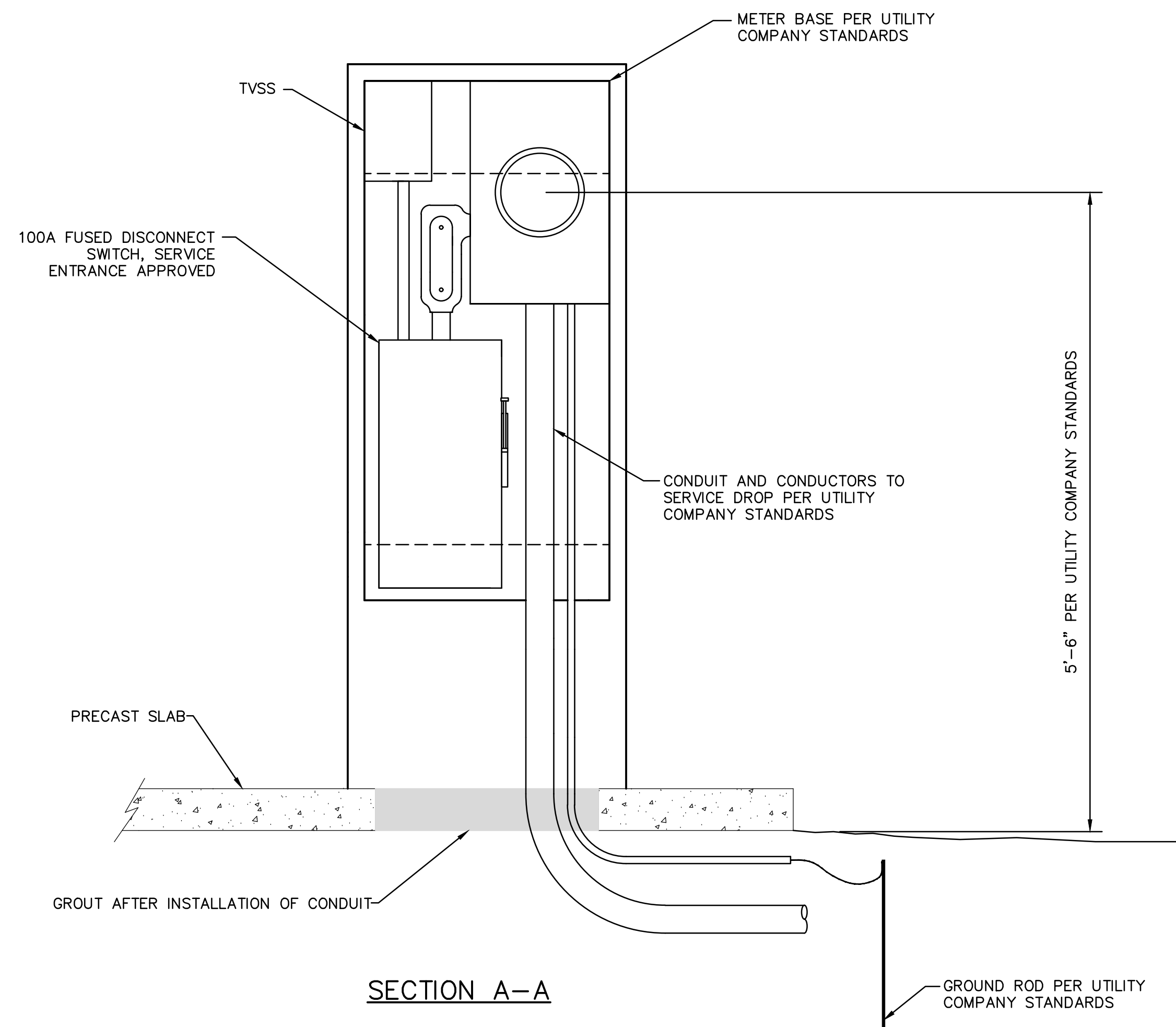
CONTROL PANEL DETAILS

Sheet

7 of 10



NOTE: THIS STYLE PANEL TO BE USED FOR 100A & 200A SERVICE INSTALLATIONS



NOTE: THESE ARE TYPICAL INSTALLATION DETAILS. SEE ELECTRICAL SITE PLAN SHEET (SHEET 10) FOR ADDITIONAL COMPONENTS AND INFORMATION,

THIS DRAWING NOT TO SCALE

CONTROL PANEL TYPICAL INSTALLATION DETAILS

NOT TO SCALE

1
8

Seal:

DATE: / /
ERIC R. OLSON, P.E.
EXPIRES 11/30/21

Drawing Issue	IEPA Submittal
07/14/20	City Submittal
08/13/20	
	Professional Design Firm No.: 184-0040.70.0010

www.millennia.pro

MILLENNIA PROFESSIONAL SERVICES

Chicago Office: 2600 Warrenville Rd. Ste 203 Downers Grove, IL 60515 630.839.2566

Peoria Office: 850 North Main St Merton, IL 61550 309.321.8141

Metro-East Office: 11 Executive Dr. Suite 12 Fairview Heights, IL 62208 618.624.8610

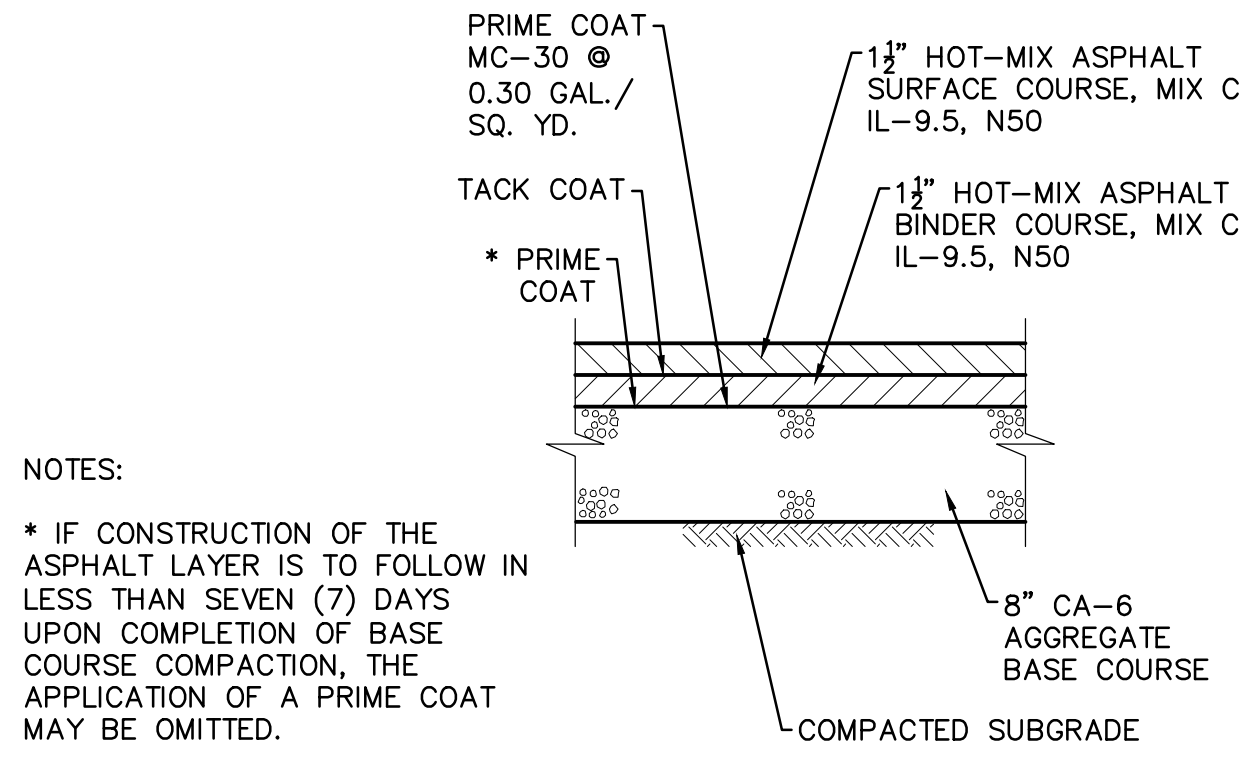
St. Louis Office: 6439 Plymouth Ave Suite W-129 St. Louis, MO 63133 314.531.9981

LAKESIDE ESTATES PUMP STATION Macoutah, Illinois

City of Mascoutah
3 West Main Street
Mascoutah, IL 62258

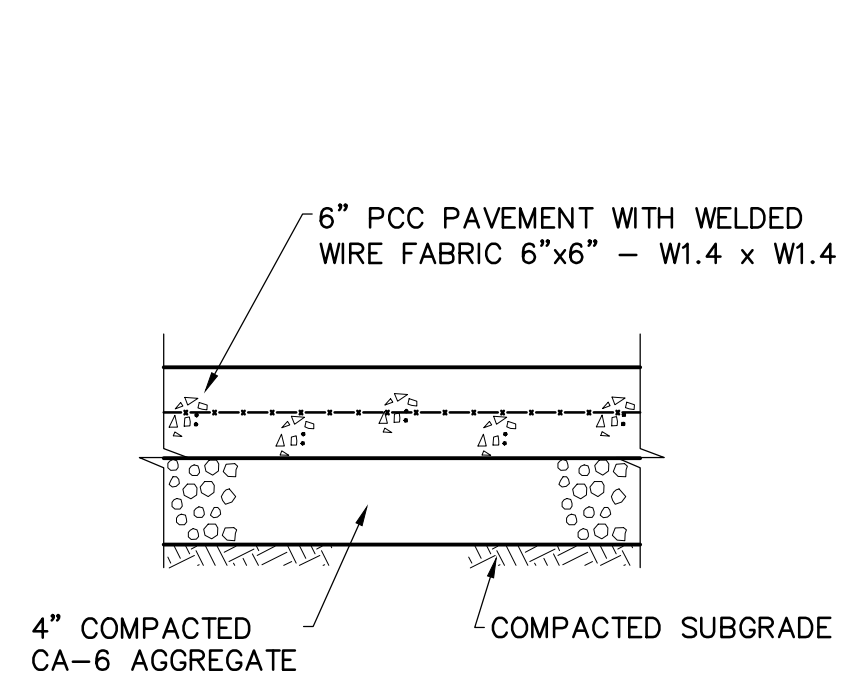
Sheet Title:
CONTROL PANEL INSTALLATION DETAILS

Sheet
8 of 10

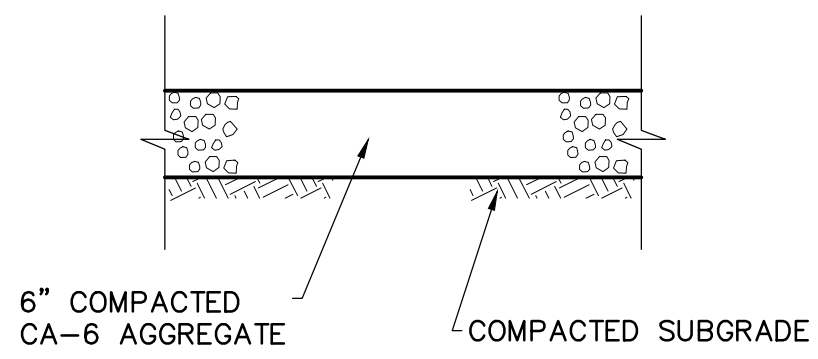


NOTES:
* IF CONSTRUCTION OF THE ASPHALT LAYER IS TO FOLLOW IN LESS THAN SEVEN (7) DAYS UPON COMPLETION OF BASE COURSE COMPACTION, THE APPLICATION OF A PRIME COAT MAY BE OMITTED.

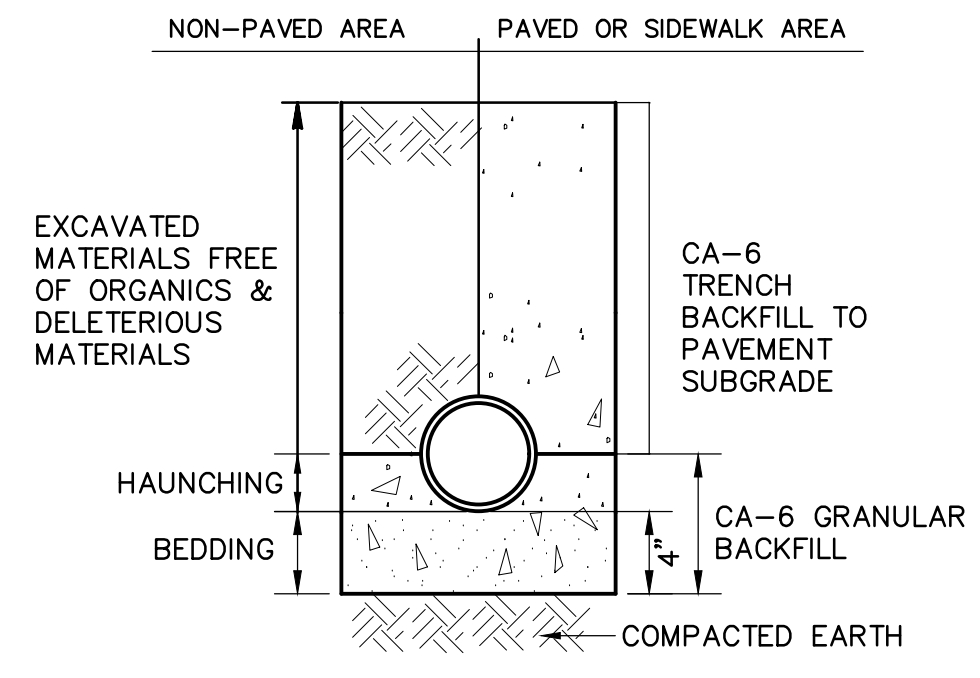
HOT-MIX ASPHALT PAVEMENT SECTION
NOT TO SCALE



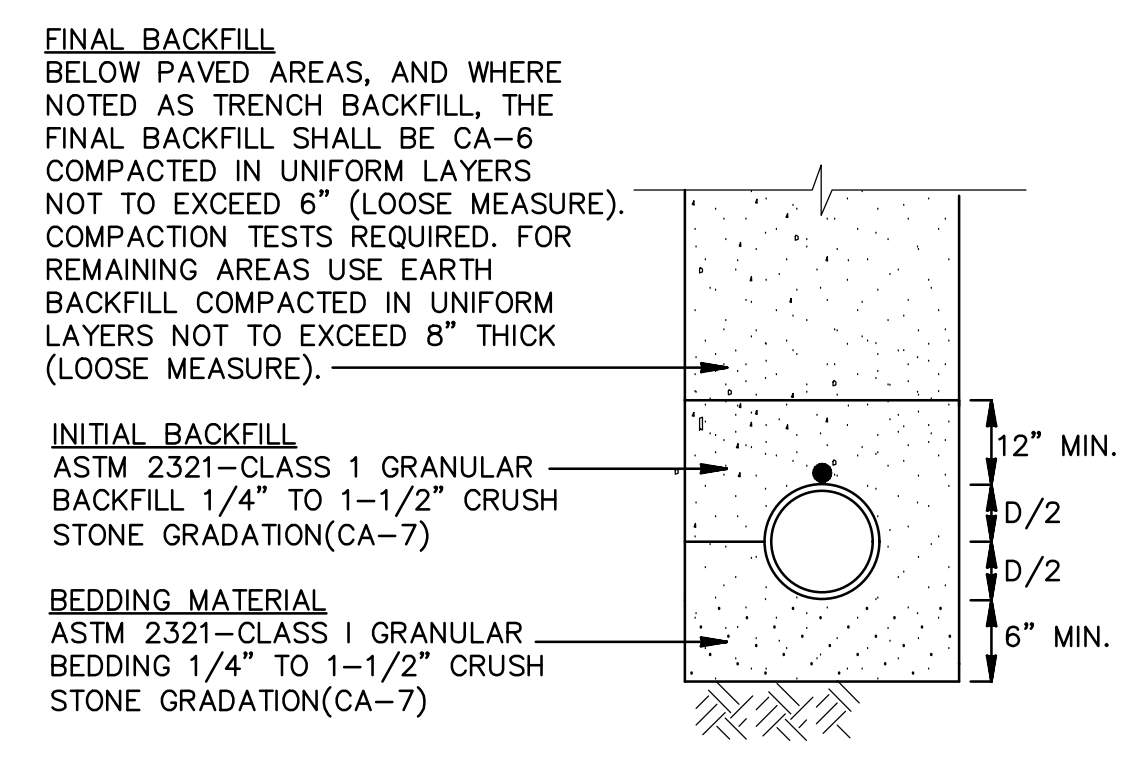
CONCRETE PAVEMENT SECTION
NOT TO SCALE



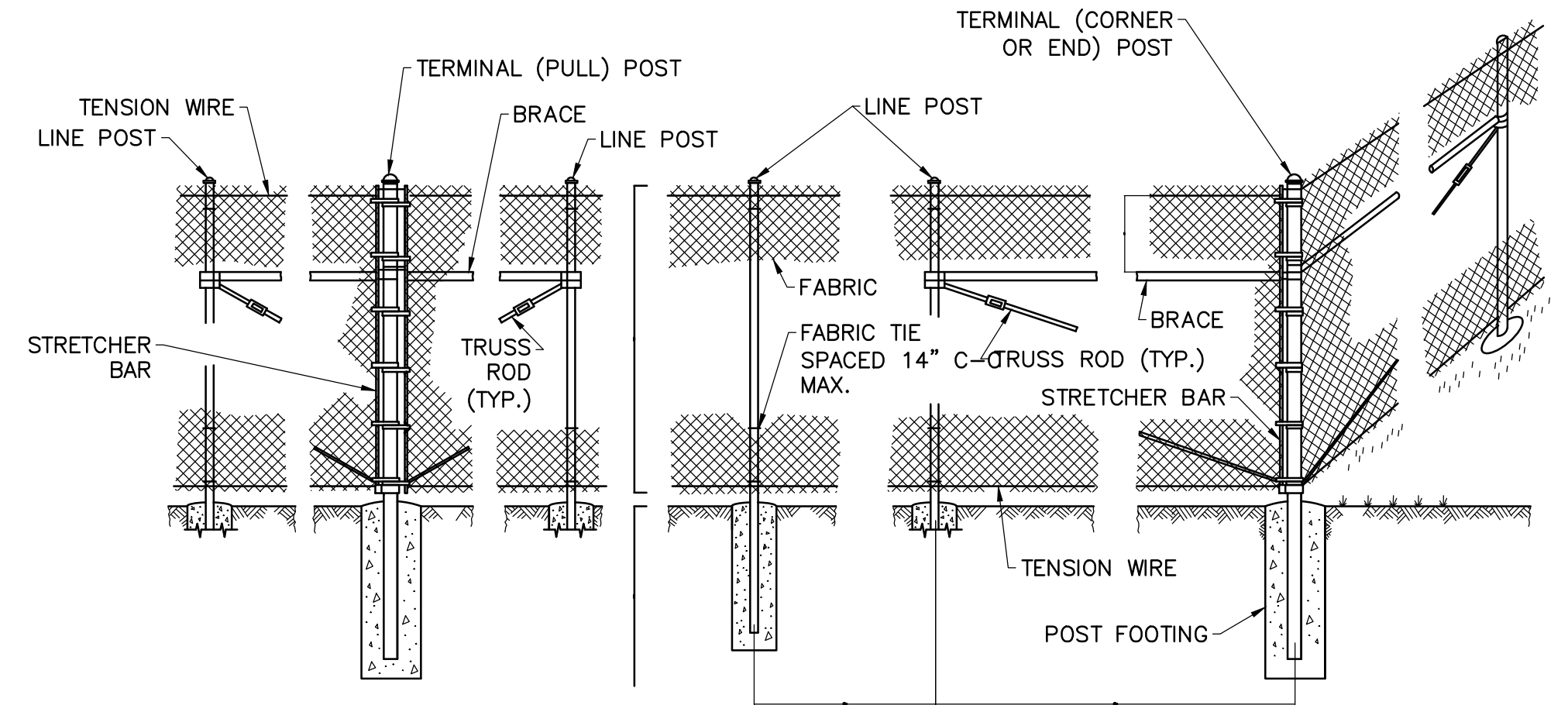
GRAVEL PAVEMENT SECTION
NOT TO SCALE



STORM SEWER TRENCH DETAIL
NOT TO SCALE

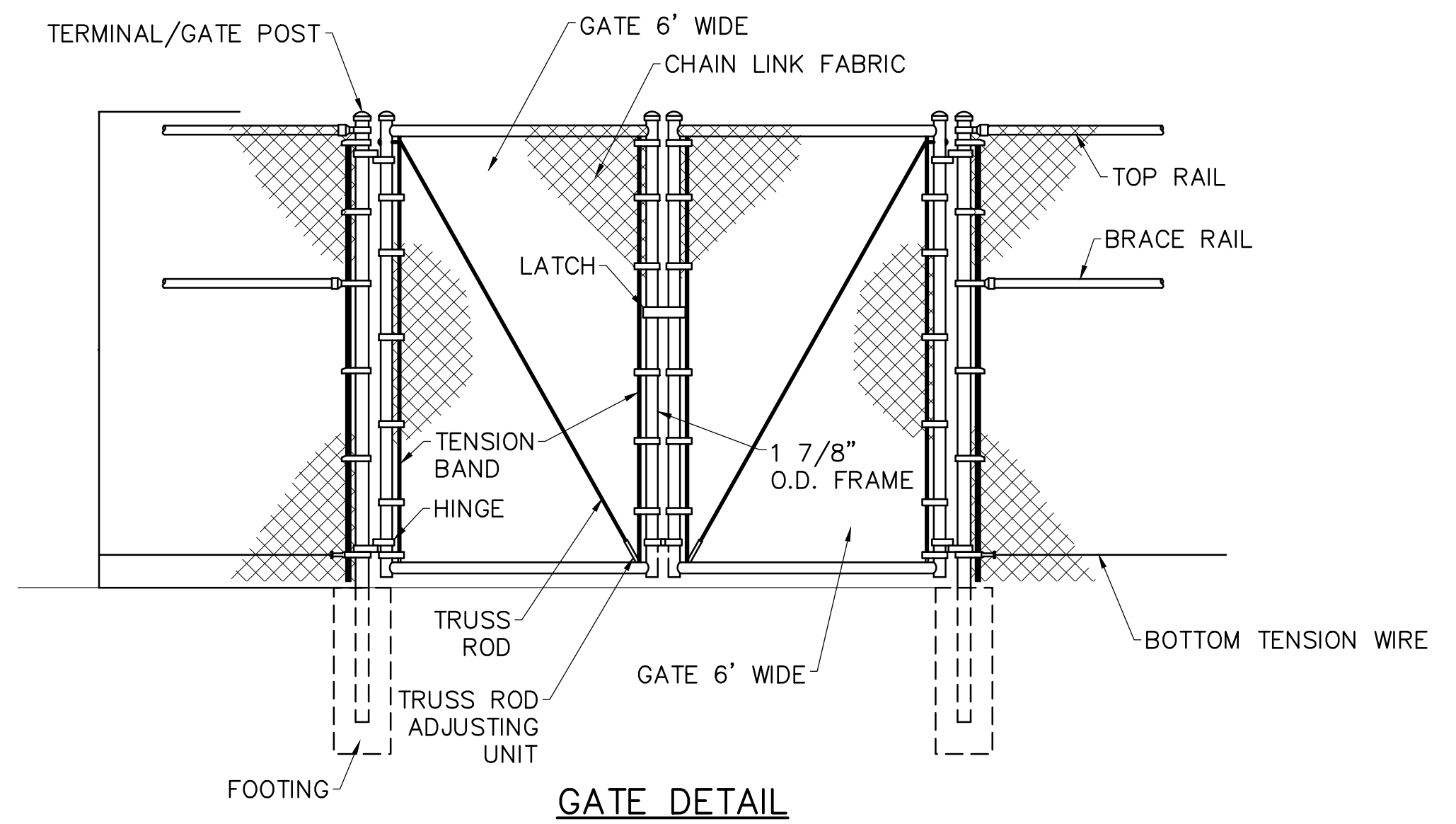


TYPICAL FORCE MAIN TRENCH DETAIL
NO SCALE

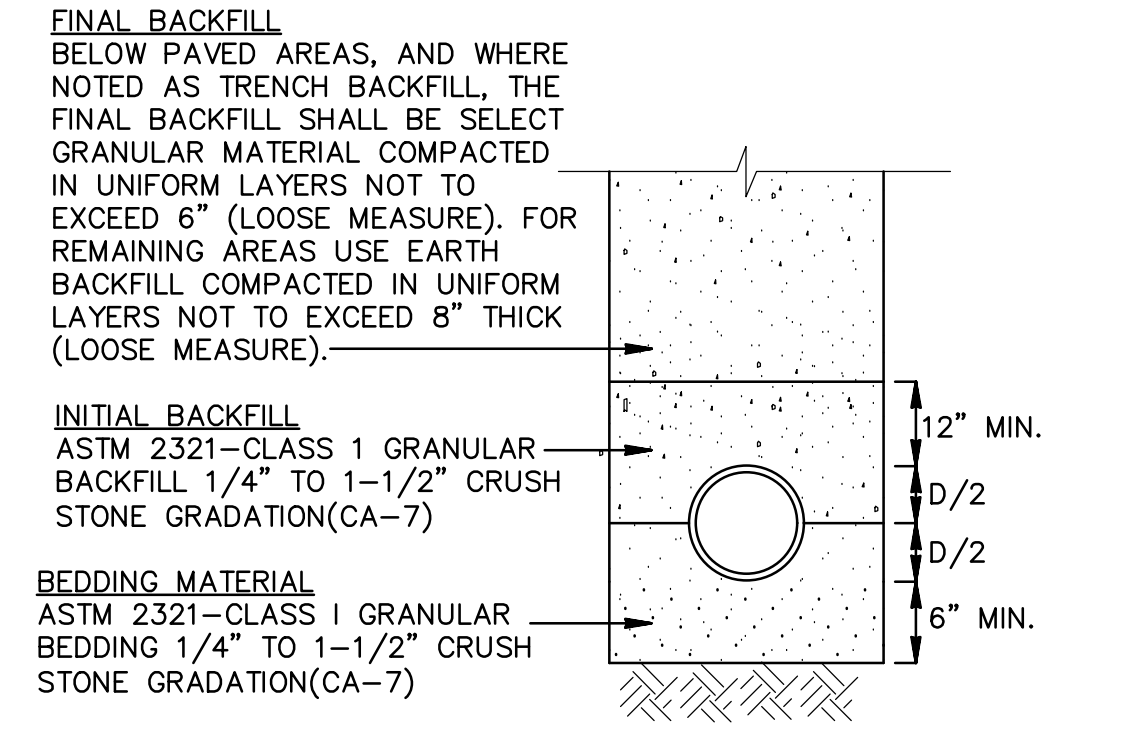


CHAIN LINK FENCE DETAIL
NOT TO SCALE

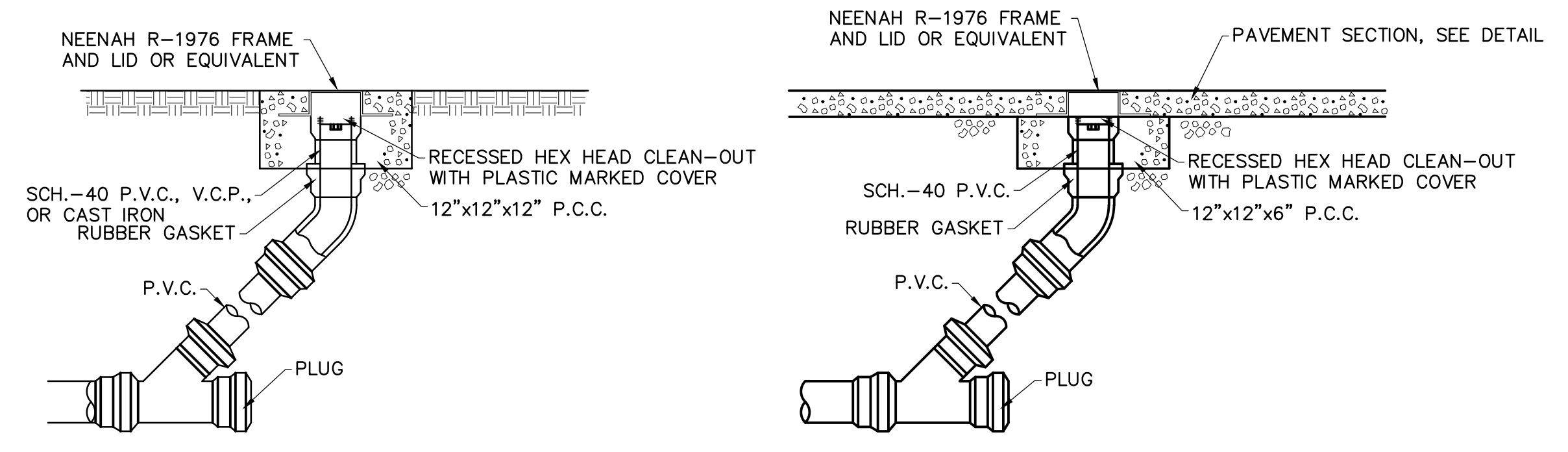
* ON UNEVEN GROUND THIS DIMENSION MAY VARY BETWEEN 1" MIN. TO 5" MAX. FOR A MAX. DISTANCE OF 8'-0".



GATE DETAIL
NOT TO SCALE



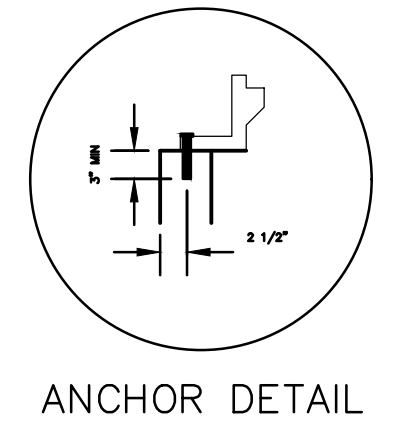
SANITARY SEWER TRENCH DETAIL
NO SCALE



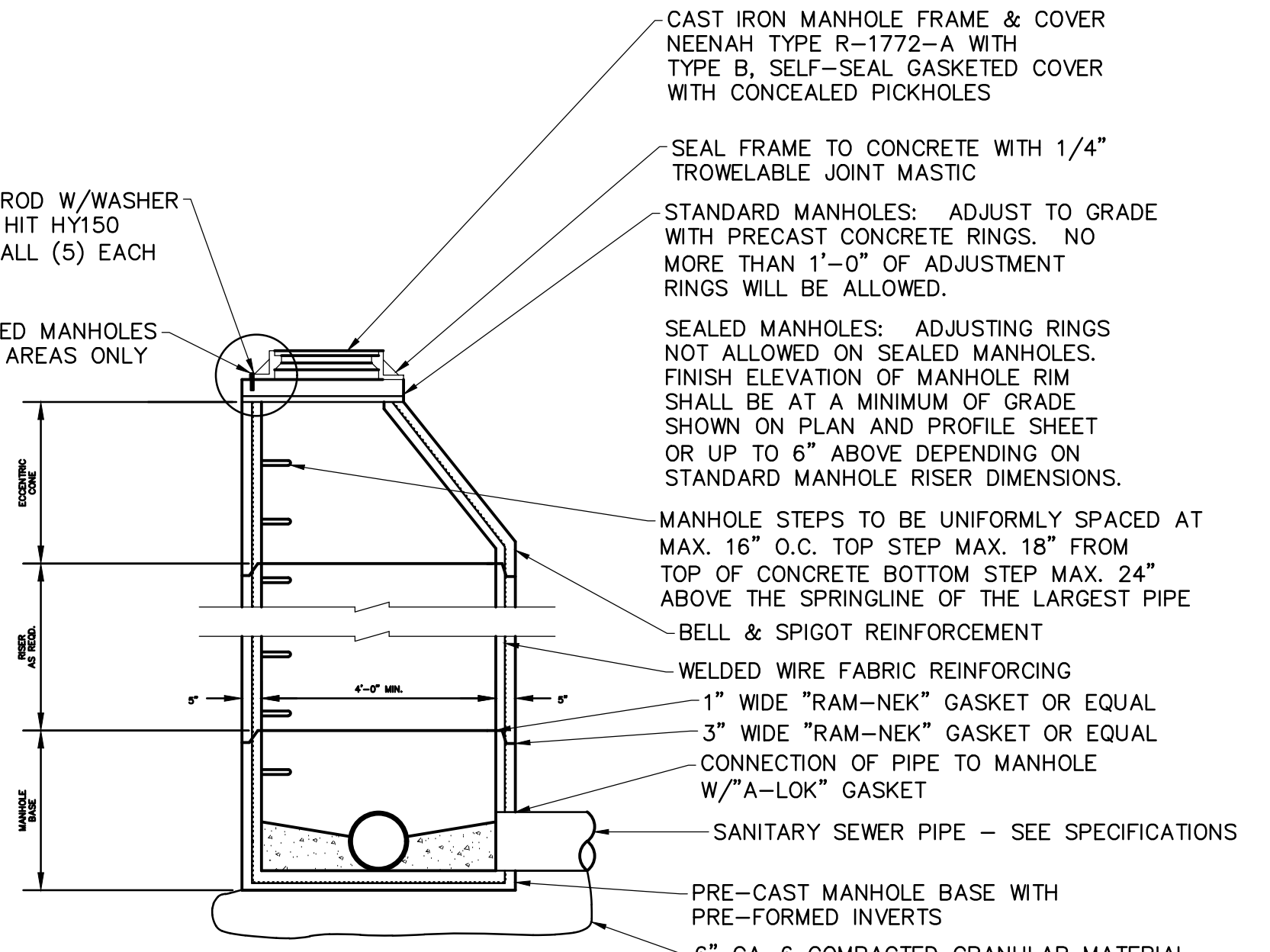
SANITARY SEWER CLEANOUT DETAIL
NOT TO SCALE

ANCHOR BOLTS TO BE 1" DIA THREADED ROD W/WASHER & NUT, FASTENED TO MANHOLE BY HILTI HIT HY150 ADHESIVE OR EQUAL. PROVIDE AND INSTALL (5) EACH FOR EACH SEALED MANHOLE

ANCHORS REQUIRED FOR SEALED MANHOLES OR MANHOLES IN ROCK ROAD AREAS ONLY



ANCHOR DETAIL



TYPICAL SANITARY SEWER MANHOLE DETAIL
NOT TO SCALE

- NOTES:
1. THE SANITARY SEWER CONTRACTOR SHALL BE RESPONSIBLE FOR SUBMITTING A COMPLETE AS-BUILT RECORD DRAWING OF ALL SANITARY SEWER WORK TO THE OWNER PRIOR TO ANY ACCEPTANCE OF THE SANITARY SEWER SYSTEM. COST FOR AS BUILT RECORD DRAWING TO BE INCLUDED IN THE BASE BID.
 2. CONTRACTOR SHALL PROVIDE MANHOLE TESTING IN ACCORDANCE WITH STANDARD SPECIFICATIONS.
 3. PROVIDE MINIMUM 0.1-FOOT OF FALL FROM UPSTREAM TO DOWNSTREAM CHANNEL ELEVATION. PROFILES INDICATE PROJECTED PIPE INTERSECTION POINT.

Seal:

DATE: _____
ERIC R OLSON, P.E.
EXPIRES 11/30/21

Drawing Issue

07/14/20	IEPA Submittal
08/13/20	City Submittal

Professional Design Firm No.: 184-004070-0010

MILLENNIA PROFESSIONAL SERVICES
www.millennia.pro

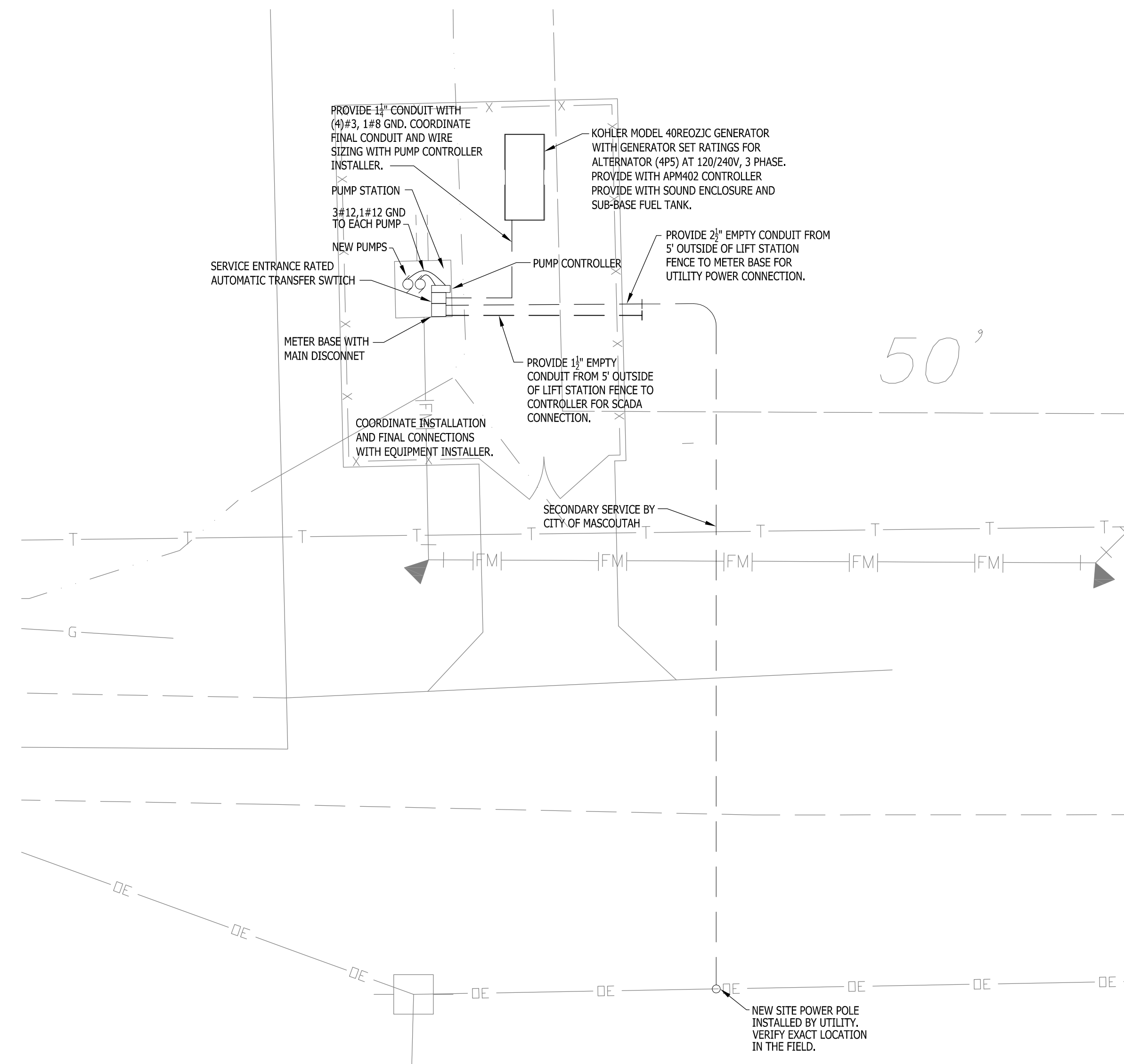
St. Louis Office: 6439 Plymouth Ave, Suite W-29, St. Louis, MO 63133, 314.531.9381
 Metro-East Office: 11 Executive Dr., Suite 12, Fairview Heights, IL 62208, 618.624.8610
 Peoria Office: 850 North Main St, Morton, IL 61550, 309.321.8141
 Chicago Office: 2600 Warrenville Rd, Suite 203, Downers Grove, IL 60515, 630.839.2566

LAKESIDE ESTATES PUMP STATION
Macoutah, Illinois

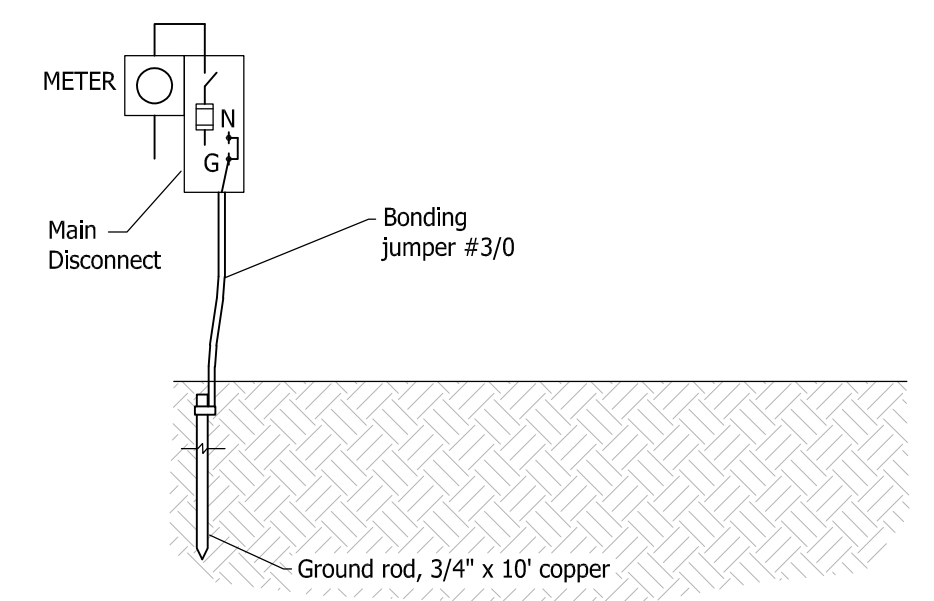
City of Mascoutah
3 West Main Street
Mascoutah, IL 62258

Sheet Title:
MISCELLANEOUS DETAILS

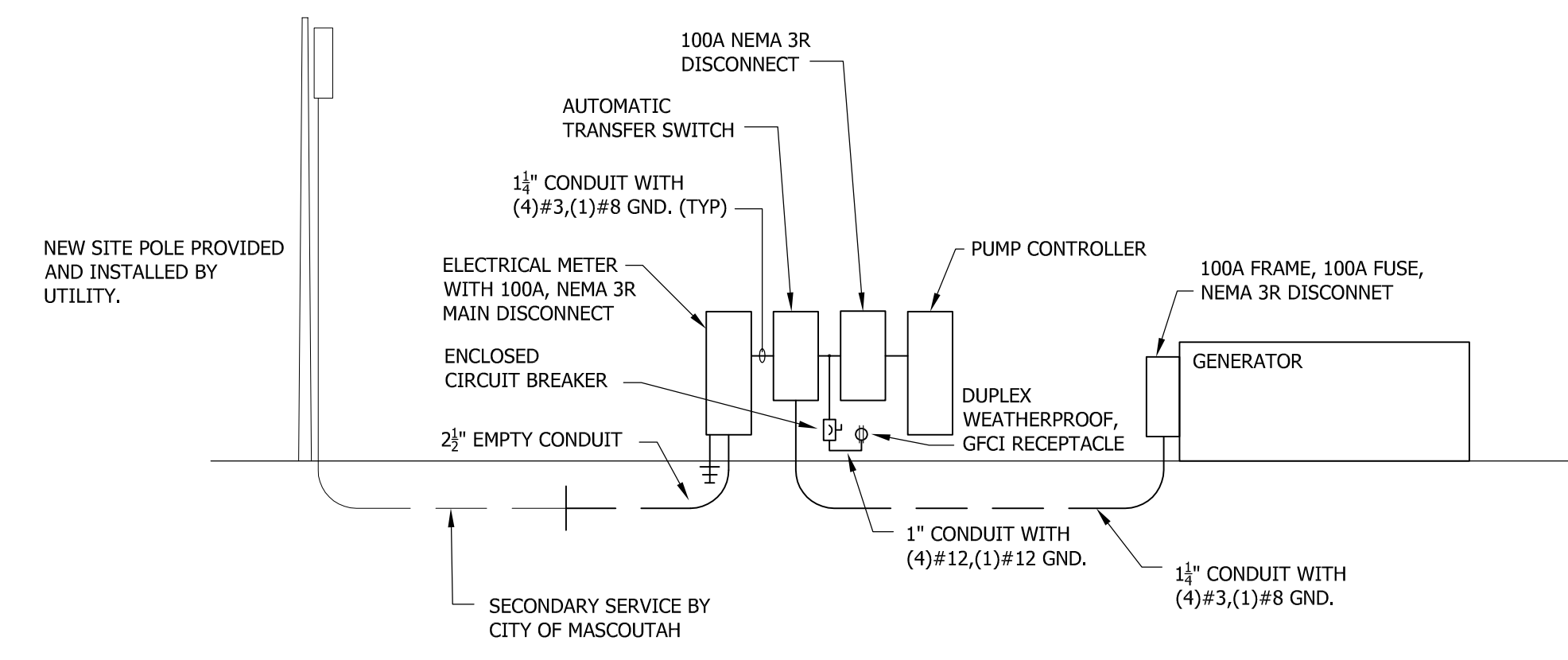
Sheet
9 of 10



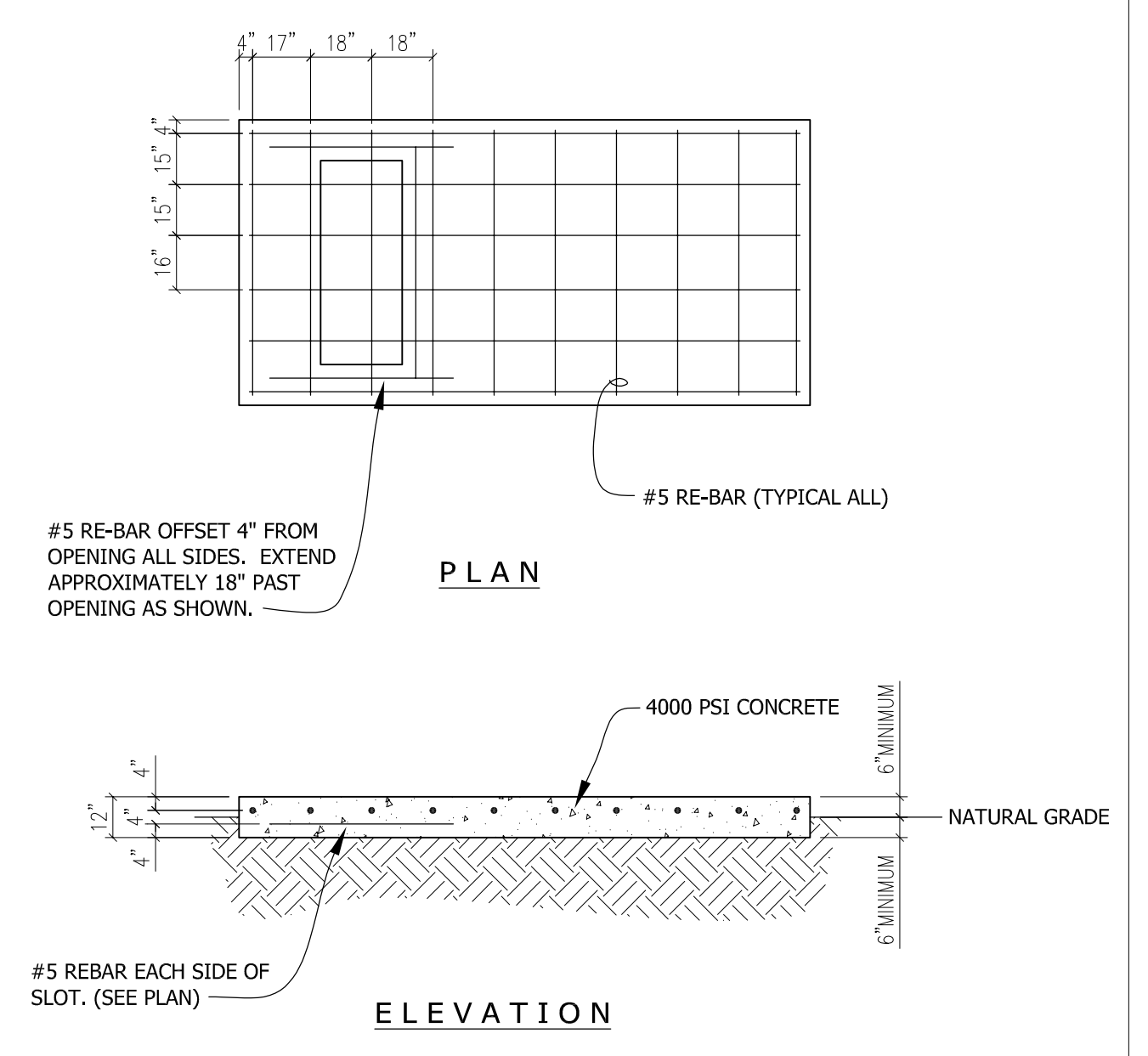
ELECTRICAL SITE PLAN
SCALE: 1/8" = 1'-0"



GROUND ELECTRODE SYSTEM BONDING DETAIL



ONE-LINE DIAGRAM

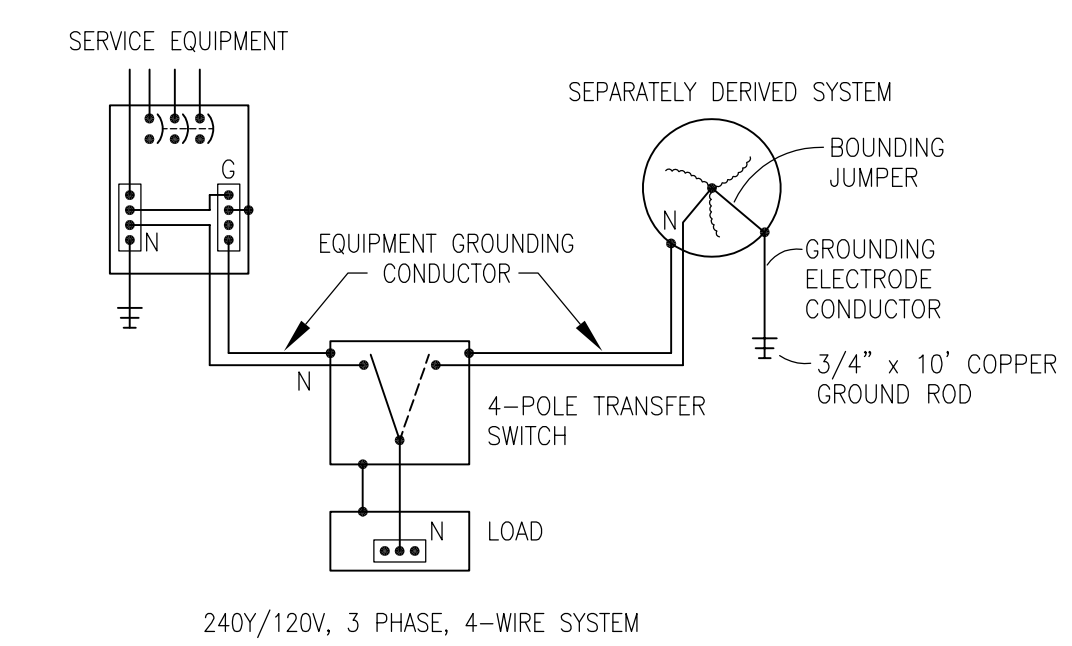


GENERATOR PAD DETAIL
SCALE: 1/4" = 1'-0"

NOTES:

1. PROVIDE ANCHOR BOLTS AND SEISMIC VIBRATION ISOLATION PER GENERATOR MANUFACTURER'S REQUIREMENTS. (VIBRATION ISOLATORS FURNISHED BY OTHERS, INSTALLED BY ELECTRICAL CONTRACTOR)
2. DESIGN BASED ON FIRM ORIGINAL EARTH AT A MAXIMUM ALLOWING BEARING PRESSURE OF 1000 LBS. PER SQUARE FOOT.
3. MINIMUM CLEARANCE ABOVE GRADE IS 6". MINIMUM DEPTH BELOW GRADE IS 6". PAD TO BE UNIFORM THICKNESS THROUGHOUT AND CROWNED 1/8" / FOOT IN SHORT DIMENSION TO PREVENT PONDING.

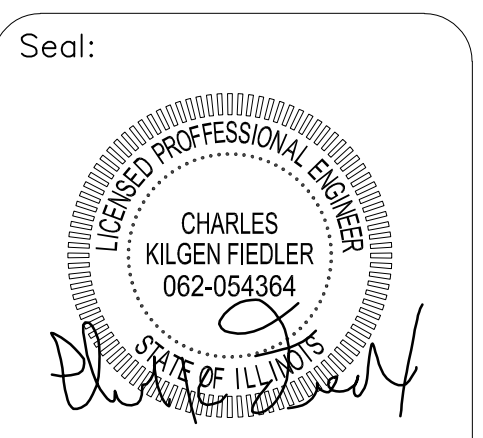
ELECTRICAL CONTRACTOR TO VERIFY SELECTED MANUFACTURER'S EQUIPMENT WILL FIT.



GENERATOR GROUNDING DETAIL

GENERAL NOTES

1. ALL WORK SHALL BE PERFORMED IN ACCORDANCE WITH THE NATIONAL ELECTRICAL CODE (NEC).
2. COORDINATE ALL WORK WITH THE CITY OF MASCOUTAH. JESSE CARLTON ; JCARLTON@MASCOUTAH.COM ; (618)566-2964 EXT. 140
TOM QUIRK ; TQUIRK@MASCOUTAH.COM ; (618)566-2964 EXT. 114



DATE: 06/16/20
CHARLES K. FIEDLER, P.E.
EXPIRES 11/30/21

Drawing Issue

Professional Design Firm No.: 184.0040.70.0010

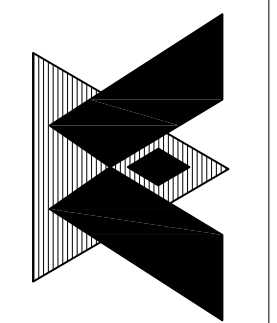


St. Louis Office
6439 Pymouth Ave
Suite W-129
St. Louis, MO 63133
314.531.9891

Metairie Office
11 Executive Dr., Suite 12
Fairview Heights, IL 62208
618.624.8610

Pecan Office
850 North Main St
Morton, IL 61550
309.321.8141

Chicago Office
2690 Wrenville Rd, Ste 203
Downers Grove, IL 60515
630.839.2566



LAKESIDE ESTATES PUMP STATION
Mascoctah, Illinois

AKS Development, LLC
84 West Harnett
Mascoctah, IL 62258

Sheet Title:
PUMP ELECTRICAL SITE PLAN